

California Gnatcatcher Regional Vegetation Sampling Photographic Guide

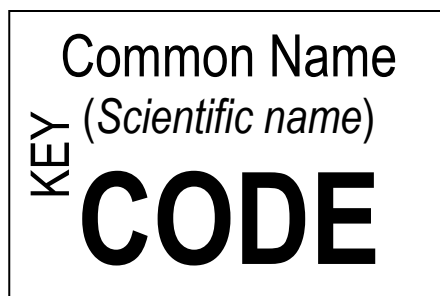


The California Gnatcatcher Regional Sampling Program includes collection of vegetation covariate data to better understand gnatcatcher habitat relationships and management needs across conserved and participating military lands in southern California. California Gnatcatcher surveys are conducted along a wandering transect through randomly selected 150m x 150m plots (2.25 ha or 5.56 acres) within predicted high and very high suitability habitat (See California Gnatcatcher Regional Survey Protocol). Vegetation data will be collected using a modified point intercept method (see California Gnatcatcher Regional Vegetation Sampling Protocol).

This document is reference material to help identify the plant species included in the vegetation sampling protocol. Please make sure you are familiar with the species in this guide. You will encounter many other plant species during your surveys, but we are only interested in documenting the ones contained in this guide. All other species will be covered by “other”.

Table of Contents

Code	Latin Name	Common Name	Page
QUER	<i>Quercus</i> spp.	Oak species	1
MALA	<i>Malosma laurina</i>	Laurel sumac	2
SAMX	<i>Sambucus mexicana</i>	Mexican elderberry	3
RHIN	<i>Rhus integrifolia</i>	Lemonadeberry	4
CEAN	<i>Ceanothus</i> spp.	Lilac species	5
ARCA	<i>Artemisia californica</i>	California sagebrush	6
ERFA	<i>Eriogonum fasciculatum</i>	California buckwheat	7
ENCA	<i>Encelia californica</i>	California/Bush sunflower	8
ENFA	<i>Encelia farinosa</i>	Brittlebush	9
BALA	<i>Bahiopsis laciniata</i>	San Diego sunflower	10
SAAP	<i>Salvia apiana</i>	White sage	11
SAME	<i>Salvia mellifera</i>	Black sage	12
BAPI	<i>Baccharis pilularis</i>	Coyote brush	13
ACGL	<i>Acmispon glaber</i>	Deerweed	14
YUCC	<i>Hesperoyucca whipplei</i> or <i>Yucca</i> spp.	Yuccas	15
BRNI	<i>Brassica nigra</i>	Black mustard	16
CEME	<i>Centaurea melitensis</i>	Tocalote	17
CYCA	<i>Cynara cardunculus</i>	Artichoke thistle	18
FOVU	<i>Foeniculum vulgare</i>	Fennel	19



Oak Spp.
(*Quercus* spp.)
QUER



E. Zelenko



R. Kleinman



Las Pilitas Nursery



P. Veilleux



W.P. Armstrong

Laurel Sumac
(*Malosma laurina*)

MALA



R. Holland



K. Gilliland



L. Baumann



P. Veilleux



A. King

Do not confuse with *Rhus ovata* (Sugarbush), which has shinier, rounder leaves.



Mexican Elderberry
(*Sambucus mexicana*)

SAMX



G. McLean



G. McLean



G. McLean



G. McLean



P. Slichter

Lemonadeberry
(*Rhus integrifolia*)

RHIN



W. Anderson



C. Jones



L. Watson



A. King



S. Matson

Lilac Species
(*Ceanothus* spp.)

CEAN



Las Pilitas Nursery



L. Baumann



www.wunderground.com



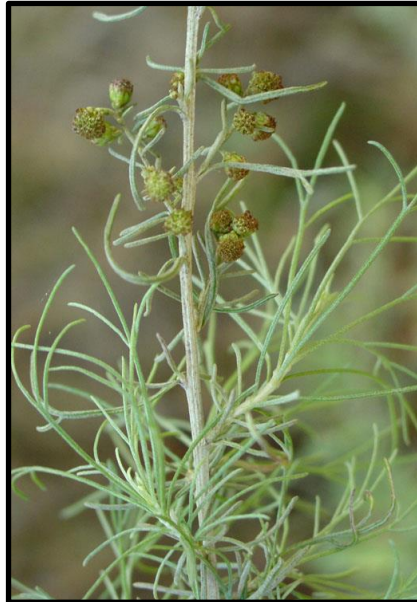
S. Shebs

California Sagebrush
(*Artemisia californica*)

ARCA



M. Fletcher



M. Bors



M. Charters



L. Watson

California Buckwheat
(*Eriogonum fasciculatum*)

ERFA



J. Pawek



K. Morse



K. Morse



K. Morse



K. Morse

California/Bush Sunflower
(*Encelia californica*)

ENCA



J. Decruyenaere



G. Monroe



www.sci.sdsu.com



www.calphotos.berkeley.edu

Brittlebush
(*Encelia farinosa*)

ENFA



G. Monroe



G. Monroe



K. Morse



Z. Akulova



J. Pawek

San Diego Sunflower

(*Bahiopsis laciniata*
Formerly *Viguiera laciniata*)

BALA



R. Spellenberg



W. Anderson



www.smmflowers.org



R. Vanderhoff

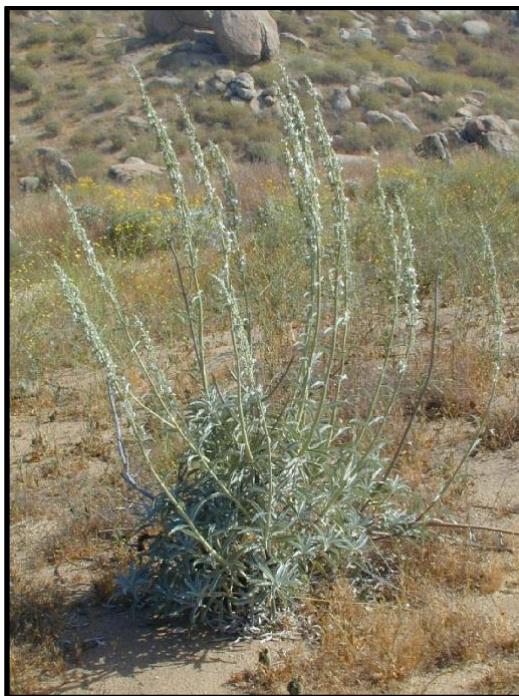
White Sage

(*Salvia apiana*)

SAAP



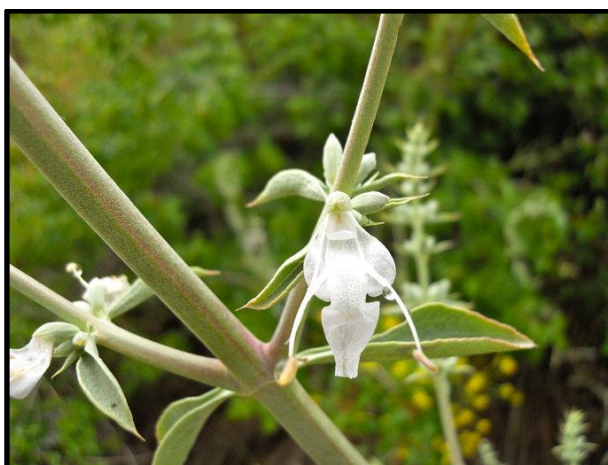
S. Thorsted



S. Thorsted



W. Anderson



D. Passarini

Black Sage
(*Salvia mellifera*)

SAME



K. Morse



D. Geiger



K. Morse



K. Morse

Coyote Brush
(*Baccharis pilularis*)

BAPI



A. Rossi



J. Pawek



www.polyland.calpoly.edu



J. Pawek

Deerweed
(*Acmispon glaber*)
(Formerly *Lotus scoparius*)

ACGL



www.csuci.edu



www.csuci.edu



www.csuci.edu



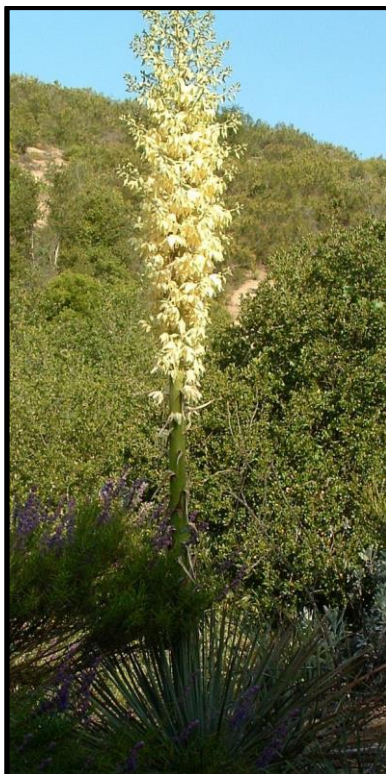
www.csuci.edu

Yuccas
(*Hesperoyucca* spp., *Yucca* spp.)

YUCC



www.abdnha.org



Las Pilitas Nursery



Las Pilitas Nursery



B.A. Brousseau, Saint Mary's College

Black Mustard
(*Brassica nigra*)

BRNI



2011 © Peter M. Dziuk

P. Dziuk



2011 © Peter M. Dziuk

P. Dziuk



2011 © Peter M. Dziuk

P. Dziuk



C. Pierce

Starthistle/Tocalote
(*Centaurea melitensis*)

CEME



K. Morse



J. Pawek



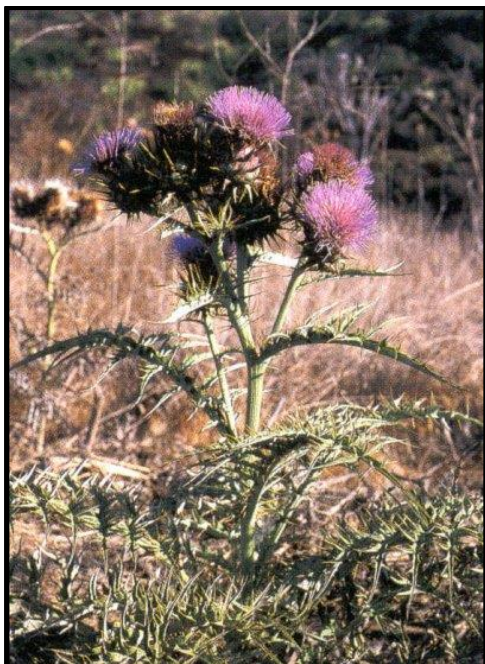
www.smmflowers.org



www.smmflowers.org

Artichoke Thistle
(*Cynara cardunculus*)

CYCA



www.cal-ipc.org



www.flowerspictures.org



G. Kyser



M. Manske

Fennel
(*Foeniculum vulgare*)

FOVU



W. Hagens



K. Starr



P. Bendle



H. Zell