

Crestridge Ecological Reserve Complex

EHL/EHC Objectives:

❖ Monitoring, Adaptive
Management

CBI

❖ Reserve Function

EHC/EHL

❖ Public Use

EDI

❖ Environmental Education

EDI

Crestridge Ecological Reserve Complex

Assembly

1999 @ 2,400 acres

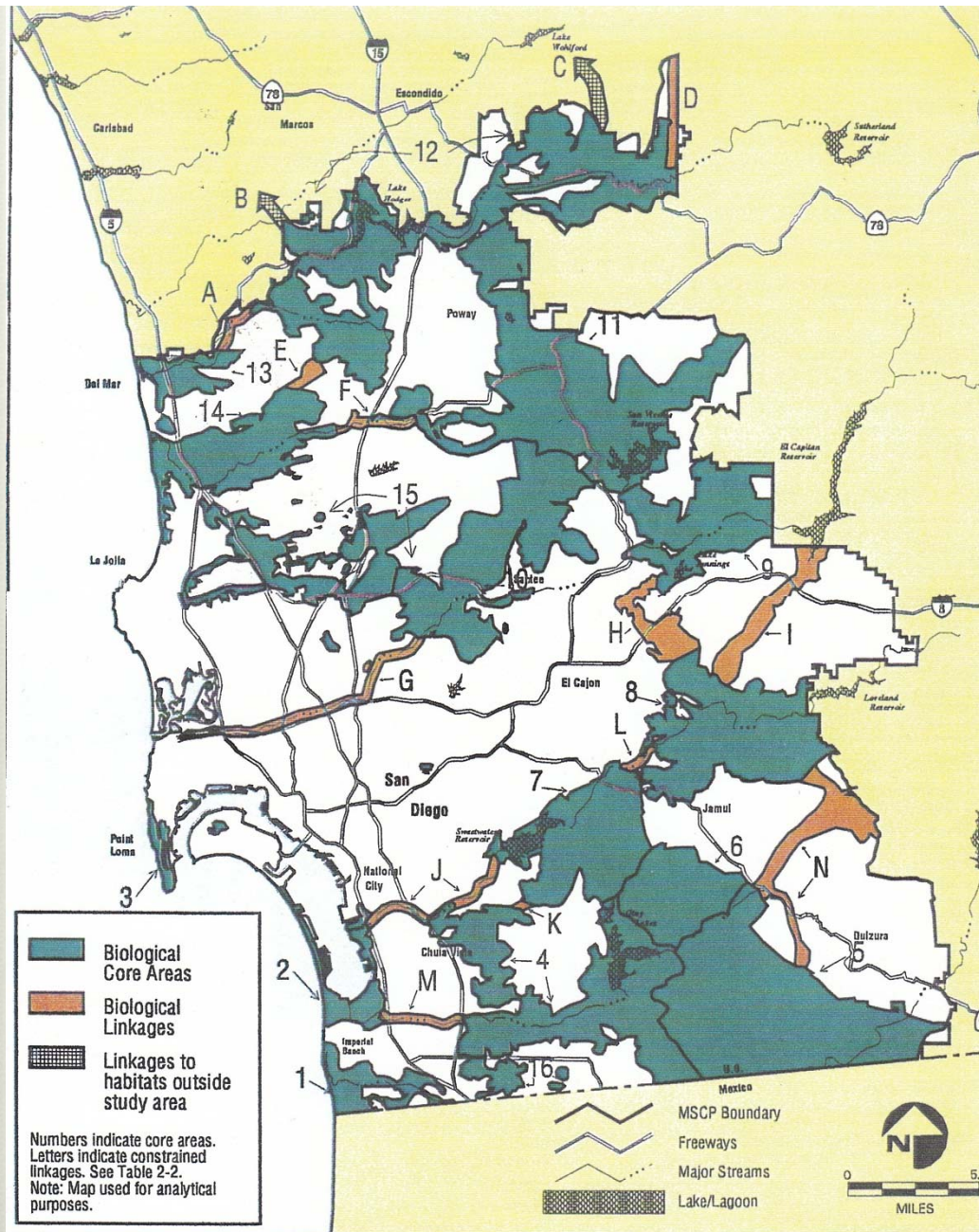
2006-2012 @ 4,000 acres

20XX @ ~5,000 acres

Crestridge Ecological Reserve Complex

Defining Characteristics

- 2003 Cedar fire @ 90%+
- 13 Covered Species
- Urban Fringe
- BRCA and Regional Linkage



OGDEN
■■■■■

Generalized Core Biological Resource Areas and Linkages

FIGURE

2-2

