

# MSCP

# Public Workshop

# 2004

**Prepared by:**

**USFWS**

**BLM**

**CDFG**

**City of  
Poway**

**City of  
San Diego**

**County of  
San Diego**



# 2004 MSCP Annual Workshop

- **Introductions**
- **Opening Remarks**
- **Presentations**
  - **California Department of Fish and Game**
  - **United States Fish and Wildlife Service**
  - **Bureau of Land Management**
  - **County of San Diego**
  - **City of Poway**
  - **City of San Diego**
- **Public Comment / Discussion**
- **Reception & Poster Session**

# California Department of Fish and Game

---





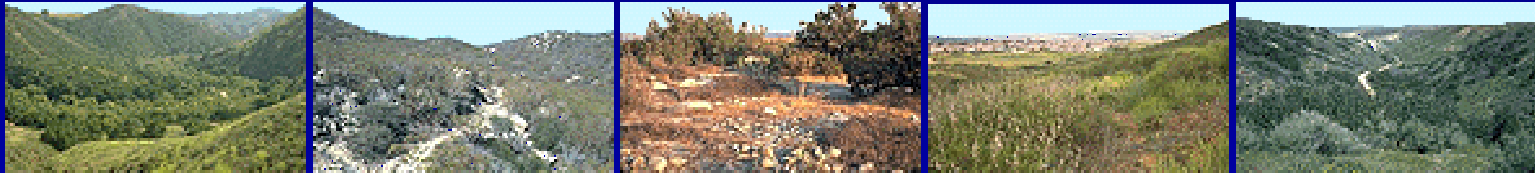
# MSCP Implementation Activities

- Land Acquisition
- Land Management and Monitoring
- Post-Fire Assessment Activities
- Local Assistance Grants





# State-Federal Land Acquisition



	2003		Cumulative (through 2003)*		
	STATE	FED	STATE	FED	TOTAL
Acres in MSCP	1,446	0	11,925	11,782	23,707
Acres in Preserve	825	0	7,245	7,780	15,115

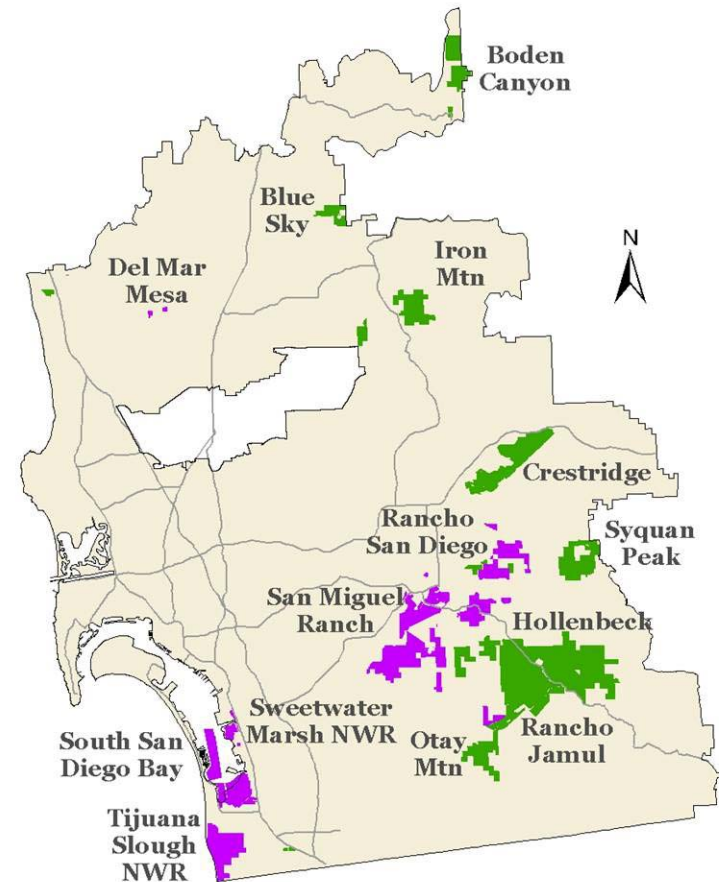
\*Cumulative totals include all State and Federal acquisitions as well as portions of local acquisitions that were funded by State/Federal dollars.

- State/Federal MSCP land acquisition requirement (13,500 acres) has been fulfilled.
- Additional acquisitions are planned using State Prop 12 funds and USFWS Section 6 land acquisition funds.



# Recent CDFG Land Acquisitions

<i>Property Name</i>	<i>Year Acq'd</i>	<i>Acres</i>	<i>Management Unit</i>
<b>Proctor Valley</b>	<b>2003</b>	<b>1,446</b>	<b>Rancho Jamul ER &amp; SD Nat'l Wildlife Refuge</b>
<b>Otay Lakes Village 15</b>	<b>2004</b>	<b>279</b>	<b>Otay Mountain ER</b>
<b>Honey Springs Ranch</b>	<b>2004</b>	<b>1,978</b>	<b>Hollenbeck Canyon WA</b>
<b>CalMat Quarry</b>	<b>2004</b>	<b>611</b>	<b>Rancho Jamul ER</b>

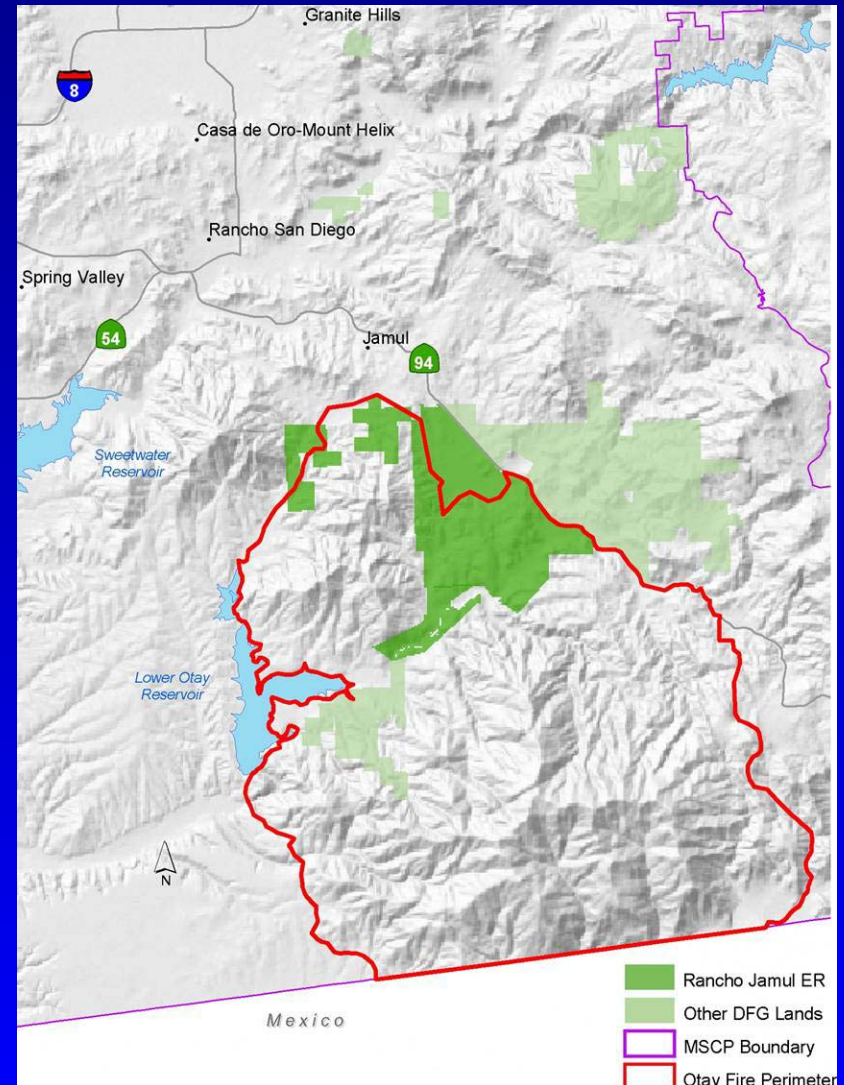


■ CDFG Lands  
■ USFWS Lands



# Rancho Jamul Ecological Reserve

- 5,751 total acres
- Acquired in 1997 (original phase)
- Expansion #3 (Proctor Valley) closed escrow in 2003
- Expansion #4 (CalMat Quarry) closed escrow March 2004
- Approximately 80% of property within Otay fire perimeter





## Rancho Jamul Ecological Reserve-cont.

- Biological inventory completed in 2003 prior to fires (birds, herpetofauna, bats, large mammals, vegetation map).
- Large population of Otay tarplant (+100,000 individuals) was discovered on the Reserve.
- Planning and construction underway to convert the old Daley residence to a research, interpretive, and meeting center.
- Management Plan preparation underway.

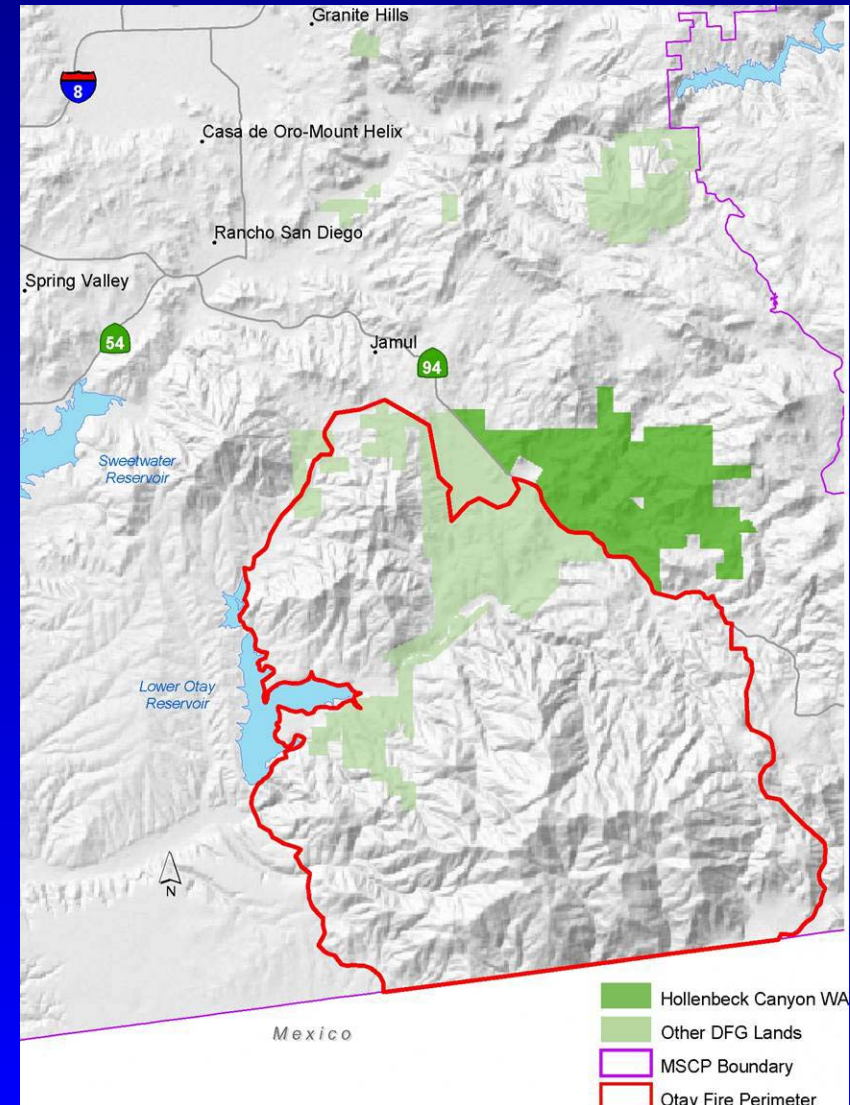






# Hollenbeck Canyon Wildlife Area

- 5,178 total acres
- Acquired in 2001 (original phase)
- Expansion # 1 (Honey Springs Ranch) closed escrow in 2004
- Not burned in fires
- Post-fire assessments will serve as a comparison for the adjacent, burned Rancho Jamul ER





# Hollenbeck Canyon Wildlife Area-cont.

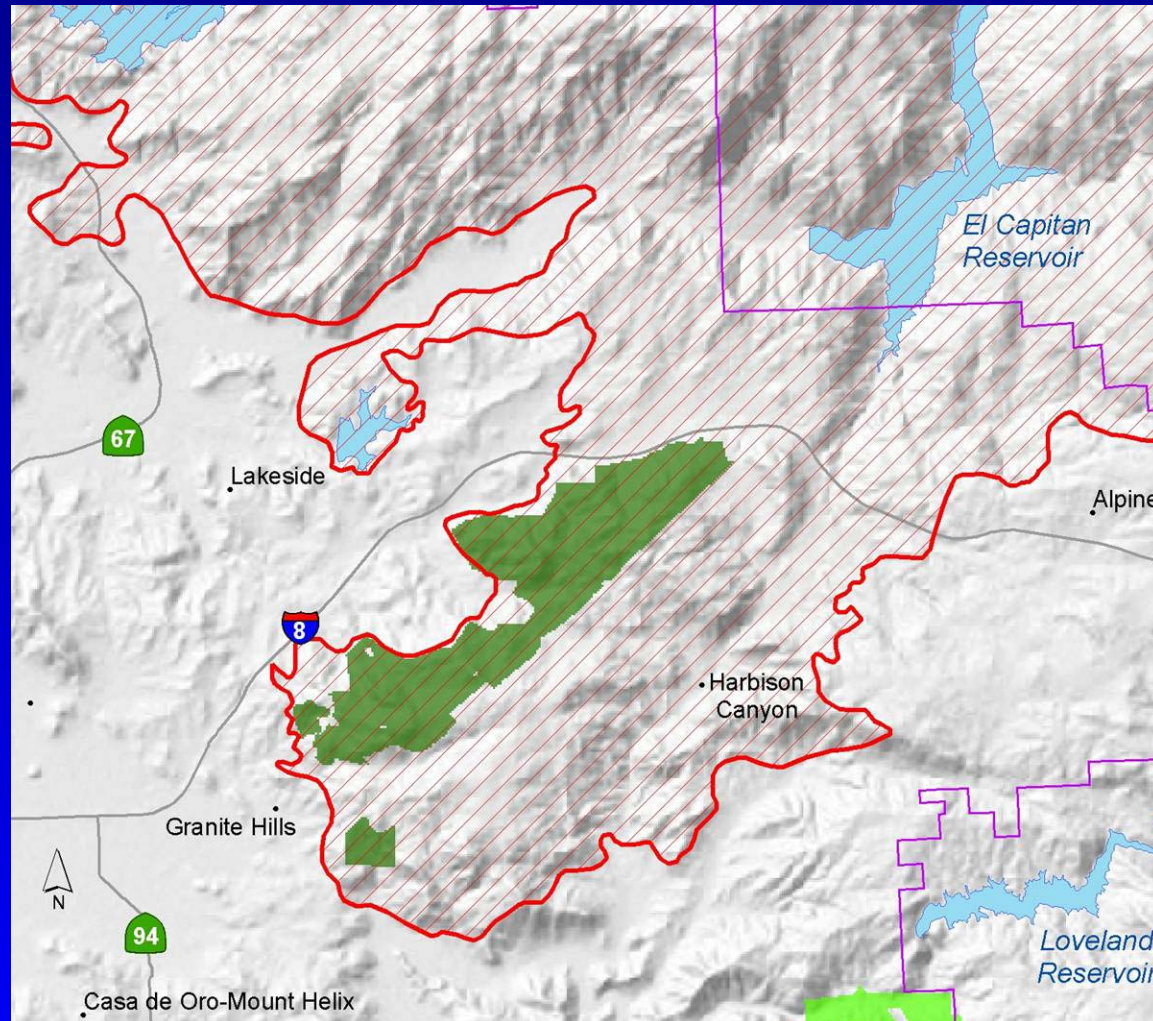
- Full biological inventory completed by USGS in 2003.
- Large population of San Diego thornmint (+33,000 individuals) – much more than previously recorded.
- Management Plan preparation underway.



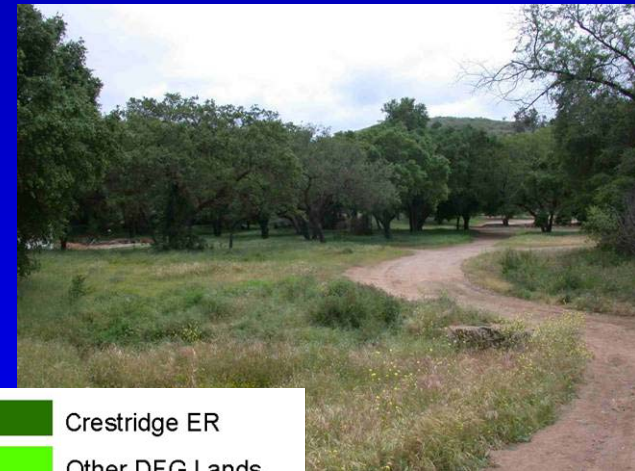




# Crestridge Ecological Reserve



- 2,760 acres
- Acquired in 1999
- 100% of property within Cedar fire perimeter





# Crestridge Ecological Reserve-cont.

- Fuel modification conducted around structures in coordination with East County Fire Prevention District
- Good post-fire recovery of plants including Palmer's Grappling hook
- Erosion control treatments installed after fires
- Partnership with EHL and SD Urban Corps for education
- Patrolling for OHV use by DFG warden (on-site residence) and County Sheriff

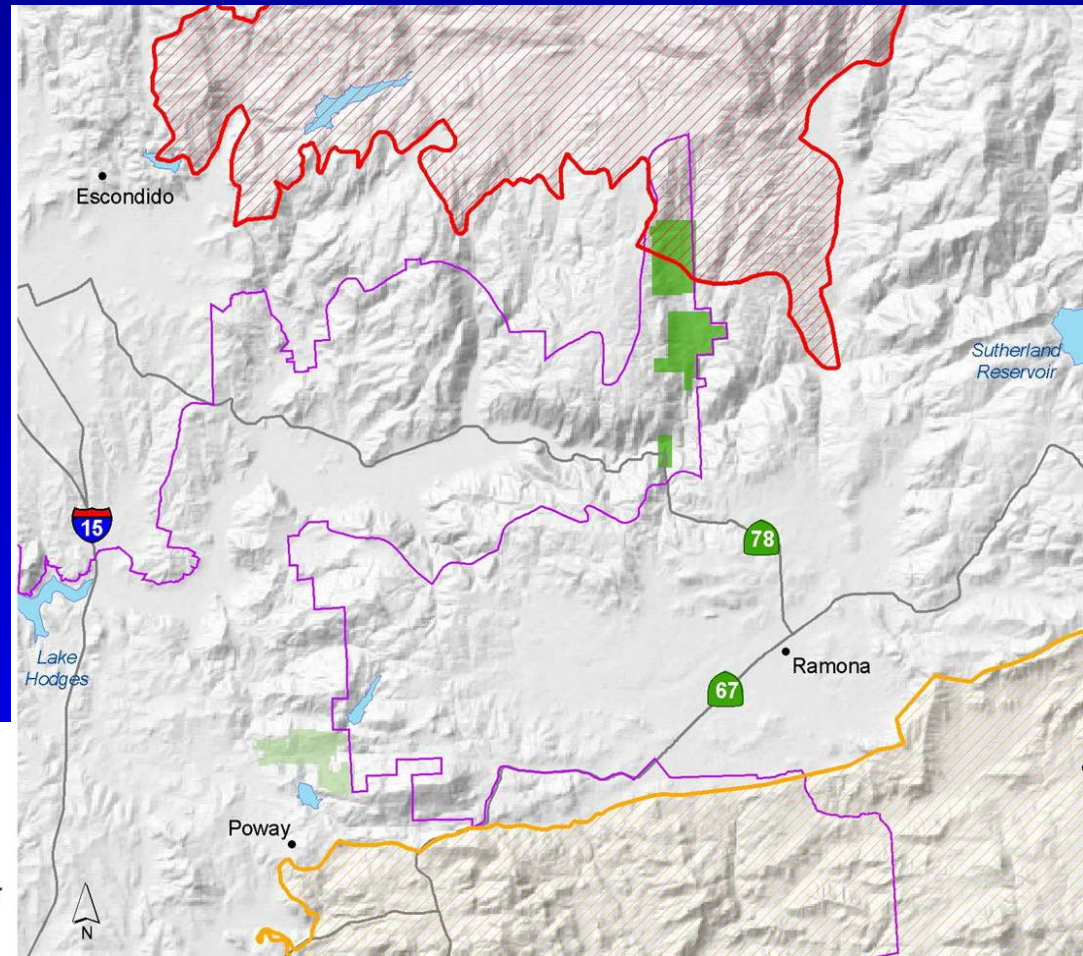






# Boden Canyon Ecological Reserve

- 1,221 acres  
(Entire multi-agency reserve is 2,068 acres)
- Acquired in 1998 and 1999
- 30% of property within Paradise Fire perimeter





# Boden Canyon Ecological Reserve-cont.

- Bird point counts conducted before fires
- Initial post-fire monitoring of Arroyo toads shows increased population in Santa Ysabel Creek

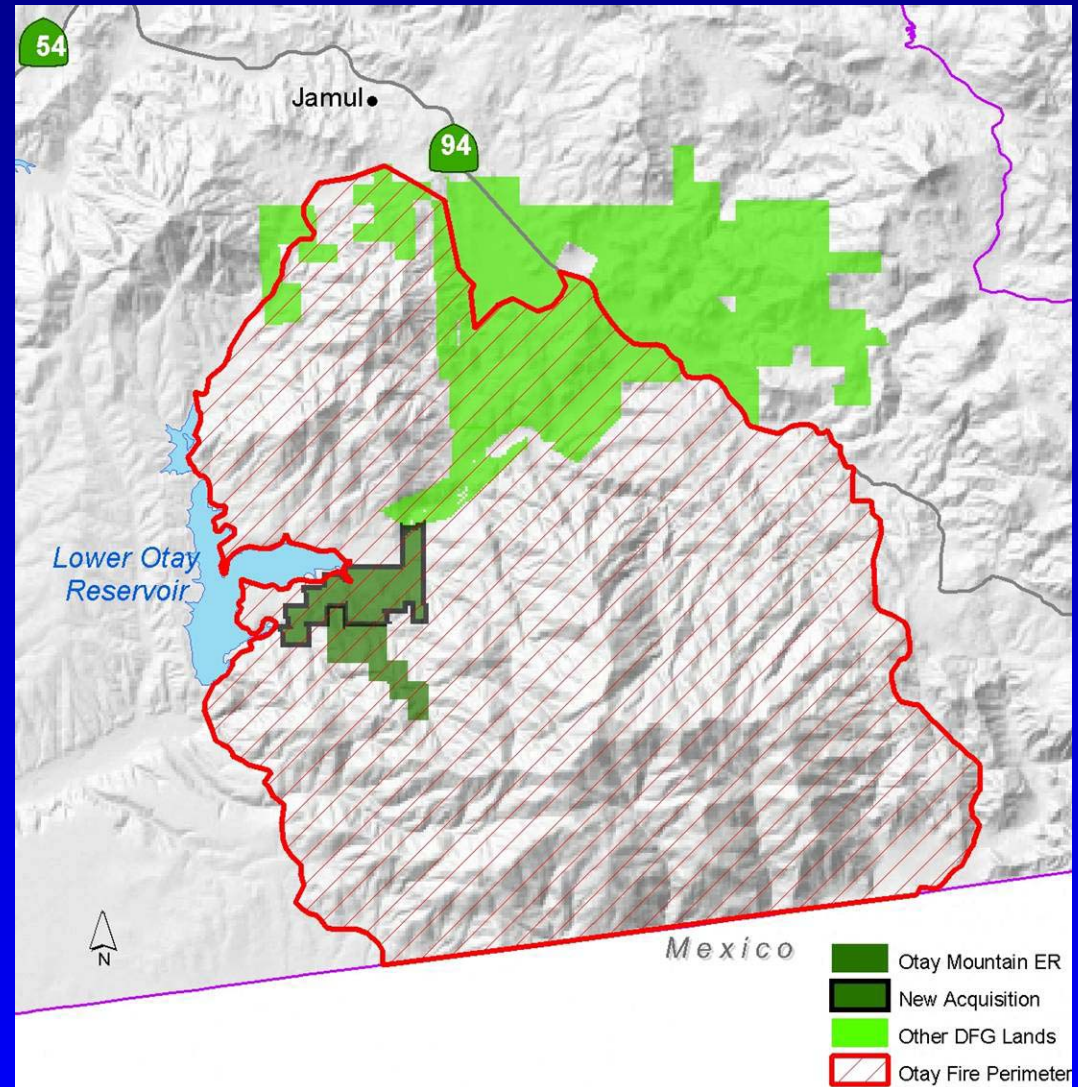






# Otay Mountain Ecological Reserve

- 1,209 acres
- Acquired in 1996 (original phase)
- 729-acre expansion (Otay Lakes Village 15) closed escrow in 2004
- 100% of property within Otay Fire perimeter





# Otay Mountain Ecological Reserve-cont.



- Vegetation monitoring was being conducted to see response from 1996 fire; monitoring will continue.
- Mature Tecate cypress cones released seeds during Otay Fire.







# DFG's MSCP-Wide Management & Monitoring Activities

- Continued eradication of exotic plants on DFG ecological reserves (Prop 12).
- Will begin a 3-year study of weed abatement and monitoring protocols in 2004.
- Full floristic survey of all native plants on DFG ecological reserves (UCR and SD Natural History Museum).
- Herbarium established at Rancho Jamul ER to house all native plant specimens for education and training purposes.
- FEMA grants awarded for post-fire management activities on DFG lands (fencing, signage, erosion control, etc).





# MSCP-Wide Post-Fire Monitoring

- Initial assessments conducted by CDFG, USFWS, and TAIC to identify species which may have been significantly affected by fires
- TAIC completed a GIS analysis of known/predicted species locations within severely burned areas and areas of high vegetation mortality.
- Many research projects being conducted by a variety of agencies

Species Point Database: October 2003 Fire Perimeters (Note: Impacted=Inside Fire Perimeter)							
Species	Subarea			El Cajon			
	County	Impacted	% Impacted	Total	Impacted	% Impacted	Total
<i>Acanthomolus ilicifolia</i>	10	45.5%	22	--	--	--	--
<i>Alimophila ruficeps canescens</i>	77	29.6%	260	--	--	--	--
<i>Ambracia pumila</i>	3	60.0%	5	--	--	--	--
<i>Baccharis vanessae</i>	0	0.0%	30	--	--	--	--
<i>Brachinecta sandiegoensis</i>	0	0.0%	3	--	--	--	0
<i>Brodiaea orcutti</i>	18	48.6%	37	--	--	--	--
<i>Clemmys marmorata pallida</i>	0	0.0%	4	--	--	--	--
<i>Eryngium aristulatum panshii</i>	3	5.8%	52	--	--	--	--
<i>Euphydryas editha quino</i>	158	73.8%	214	--	--	--	--
<i>Mulla clevelandii</i>	99	84.6%	117	--	--	--	--
<i>Phrynosoma coronatum blainvillae</i>	82	55.4%	148	--	--	--	--
<i>Polioptila californica californica</i>	299	25.4%	1177	0	0.0%	3	--
<i>Satureja (= Calamintha) chandleri</i>	3	60.0%	5	--	--	--	--
<i>Senecio ganderi</i>	--	--	6	--	--	--	--
<i>Streptopcephalus woodi</i>	0	0.0%	2	--	--	--	--
<i>Tetraoecus diolus</i>	4	11.4%	35	--	--	--	--
<i>Vireo bellii pusillus</i>	34	29.8%	114	--	--	--	--





# MSCP-Wide Post-Fire Monitoring

- Gnatcatcher monitoring (USFWS)
- Golden eagles and other raptors (WRI)
- Mammalian community recovery (SDSU)
- Quino checkerspot butterfly (USFWS)
- Hermes copper butterfly (CDFG)
- Wildlife corridors (SD Tracking Team)
- Effects of fuel age mosaics and burn severity (USGS)
- Site-specific biodiversity assessments (USGS)
- Many other efforts being conducted by local jurisdictions and San Diego Fire Recovery Network participants.





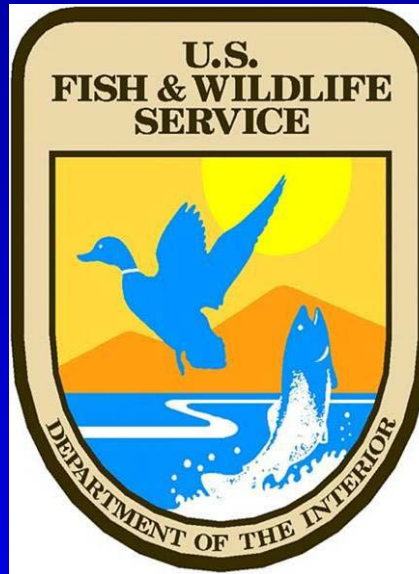
# NCCP Local Assistance Grants

- Grant program began in 1996-97.
- Distribution of funding for FY 2003-04 projects has been delayed due to State budget cutbacks. Projects included:
  - Raptor monitoring (WRI)
  - MSCP Biological Monitoring Plan revision (City of SD)
  - Quino checkerspot butterfly habitat enhancement study (County of SD)
  - Marron Valley Management Plan (City of San Diego)
  - Spring Canyon vernal pool fencing (City of San Diego)
  - HabiTrak maintenance (SANDAG)
- Additional funding may be available in FY 2004-05.



# U.S. Fish & Wildlife Service

---





# Acquisitions

- No acquisitions in 2003
- Have acquired 390 acres so far this year, pending acquisition of ~226 acres (to be added to the San Diego National Wildlife Refuge)





# Management and Monitoring

- Coastal Refuges
- San Diego National Wildlife Refuge







# Coastal Refuges

- Tijuana Slough
- Sweetwater Marsh
- South San Diego Bay





# Coastal Refuges-cont.

## California Least Tern

- Colonies are monitored weekly
- Predator control
- Vegetation control (Sweetwater Marsh)
- Substrate enhancement (South San Diego Bay)
- Signs and Fencing





# Coastal Refuges-cont.

## Western snowy plover

- **Winter counts at Tijuana River mouth**
- **Weekly monitoring during the breeding season**
- **Predator control**
- **Vegetation control (Sweetwater Marsh)**
- **Substrate enhancement (South San Diego Bay)**
- **Signs and Fencing**



# Coastal Refuges-cont.

## Salt marsh bird's beak

- **Presence absence surveys**
- **Salt marsh habitat is not open to public use**
- **Retain a full-time law enforcement officer to control trespass into salt marsh habitat**
- **Signs and Fencing**





# Coastal Refuges-cont.

## Light-footed Clapper Rail

- **Surveyed annually**
- **Salt marsh habitat is not open to public use**
- **Retain a full-time law enforcement officer to control trespass into salt marsh habitat**
- **Signs and Fencing**







# Coastal Refuges-cont.

## Nuttall's lotus

- Presence absence surveys at Sweetwater Marsh (at known stands)
- Larger stands are within an area closed to public use
- Staking is used to delineate stands





U.S. Fish & Wildlife Service

# San Diego National Wildlife Refuge







U.S. Fish & Wildlife Service

# San Diego National Wildlife Refuge

## Otay Tarplant Habitat Recovery and Management

- **Herbicide application**
  - to reduce seed base for invasive exotics
  - to provide open areas for Otay tarplant





# Other Monitoring

- California gnatcatcher
- Post-fire monitoring
  - Gnatcatchers
  - Quino checkerspot butterfly
  - Plants





# California Gnatcatcher Study

- A reserve-wide study of local California gnatcatcher populations
- Multi-jurisdictional study:
  - **County of San Diego**
  - **City of San Diego**
  - **Sweetwater Authority**
  - **U.S. Fish & Wildlife Service**
  - **California Department of Fish and Game**





## Project Goals:

- Estimate the percent area occupied by Coastal California Gnatcatchers (CAGN) across its range on preserve lands within the MSCP.
- Estimate abundance of CAGN across its range on preserve lands within the MSCP.





# Objectives:

## Primary:

- **Collect the first data set relative to detecting the trend of Coastal California Gnatcatchers (CAGN) populations managed under the MSCP.**
- **Collect the baseline data set required for monitoring the recovery of CAGN populations that were impacted by the large fires of 2003.**

## Secondary:

- **Evaluate how heterogeneity in habitat parameters affects CAGN detectability.**
- **Evaluate how CAGN distribution varies with habitat types.**



## Methods:

### Sample Area:

- The sampling area for the study included only lands currently regulated within the MSCP Preserve.
- The habitat model was thus used to classify land within the preserve system as one of eight strata (Very High, High, Moderate, and Low quality habitat for each point as to whether it was burned or unburned during 2003 fires).





## Methods cont.

### Sampling Effort:

- Points were randomly selected within each habitat strata (8). A stratified random sample design was employed to determine how many sample points are visited within each stratum.
- Each point is visited 5 separate times during the survey period (March 15 – April 18).
- Record the presence or absence of CAGN at the survey point.



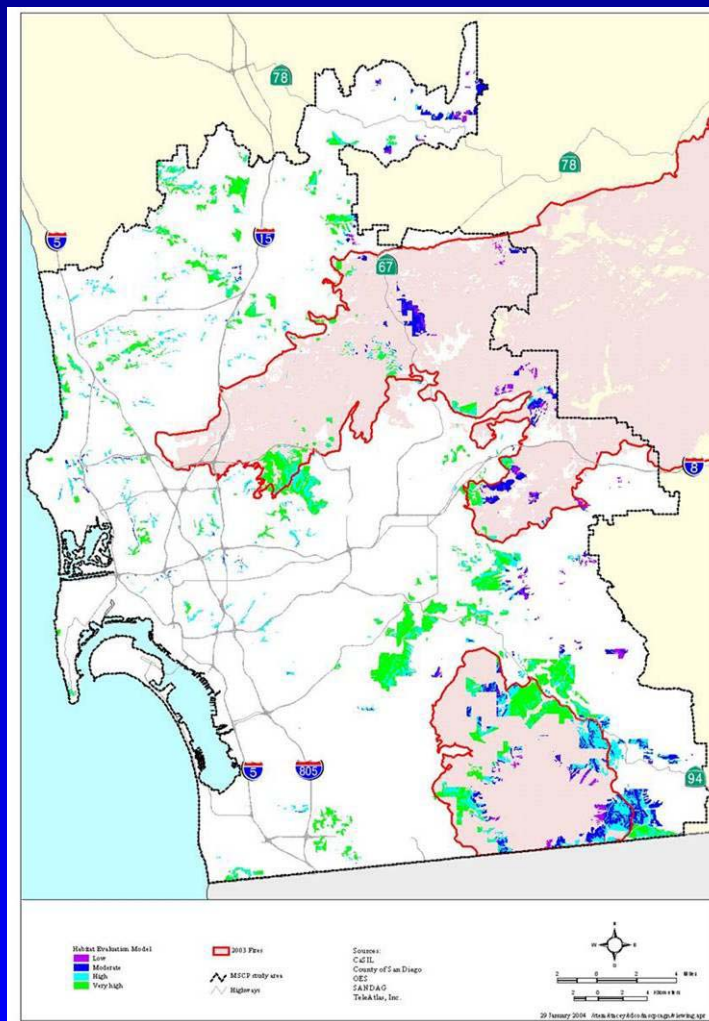
**Draft Map CAGN Model  
MSCP and Public Lands**

Model is within public lands of the MSCP  
 VERY HIGH approx. 19,668 acres  
 HIGH approx. 15,179 acres  
 MODERATE approx. 7,008 acres  
 LOW approx. 1,762 acres

Data Sources: 1:800 County Digital Models, USFS, NCHS, USGS, and other public domain data.



# Survey Area Categorized by Habitat Type Showing Impacts of 2003 Fires





# Number of Sample Sites Impacted by 2003 Fires by Habitat Type

CAGN HABITAT EVALUATION MODEL CLASSIFICATION	TOTAL NUMBER OF SITES	NUMBER OF SITES NOT IN THE 2003 FIRE FOOTPRINT	NUMBER OF SITES DIRECTLY IN THE 2003 FIRE FOOTPRINT	PERCENTAGE OF POINTS IMPACTED BY 2003 FIRE WITHIN EACH HABITAT
Very High	244	169	75	30.7
High	186	117	69	37.1
Moderate	97	46	51	52.6
Low	24	4	20	83.3
<i>Total Sample Pool</i>	551	336	215	





# Number of Points Surveyed

- Very High Quality Habitat
  - No Burn 92
  - Burn 15
- High Quality Habitat
  - No Burn 45
  - Burn 15
- Moderate Quality Habitat
  - No Burn 14
  - Burn 14
- Low Quality Habitat
  - No Burn 4 (all remaining sites that did not burn)
  - Burn 14



# Post-Fire Monitoring

- California Gnatcatcher
- Quino Checkerspot Butterfly
- Plants





# California Gnatcatcher

- Gnatcatchers were not detected in burned *modeled* habitat
- About one-half of areas that burned were not modeled as high quality gnatcatcher habitat





# Quino Checkerspot Butterfly

- Quino have been detected within most of the burned areas
- Quino were found within the Otay fire perimeter near Otay Lakes, Otay Mountain and Marron Valley







# Plants

## Incidental plant detections

- **Tecate Cypress seedlings sprouting in burned areas**
- **Narrow-leaved nightshade was detected in south county**





## Post Fire Monitoring-cont.

- Need additional surveys and monitoring in subsequent years to determine fire-related effects on plants and wildlife



# Bureau of Land Management

---





## **MSCP Contributions 2003**

### **Acquisitions**

- Cumulative purchases 1996 through 2003: 3,903 acres
- Cumulative purchase total since 1996: \$10,763,000
- Start proceedings for the acquisition of 218 acres,  
finalize in 2004





# State and Federal land protection

- The boundaries of the BLM lands are posted as they are acquired
- Staffing for the South Coast Project Office included Wildlife Biologist, Law Enforcement Ranger, Fire Management Officer, Fire Prevention Specialist, Project Manager
- Patrols conducted by Ranger and Fire Prevention Specialist
- Continued development of joint management strategy with Pronatura and Fundacion La Puerta for a cross-border Cuchuma/Tecate Peak conservation area



# Fire Stabilization Projects – Otay Fire

**Started procedures and will complete in 2004:**

- Ecological stabilization project herbicidal spraying of approximately 250 acres for non-native plant species
- Invasive species control project (re-vegetation of approximately 250 acres with native plant species)
- Temporary vehicle closure on and around Otay Mountain
- Reconstruct boundary fence (protection of Federal endangered plant and wildlife habitat)
- Road maintenance on Otay and Minnewawa Truck Trails (replace culverts for watershed protection)

# County of San Diego

---

**Chairwoman**  
**Dianne Jacob**  
**District 2**

**Vice-Chairwoman**  
**Pam Slater-Price**  
**District 3**

**Supervisor**  
**Greg Cox**  
**District 1**

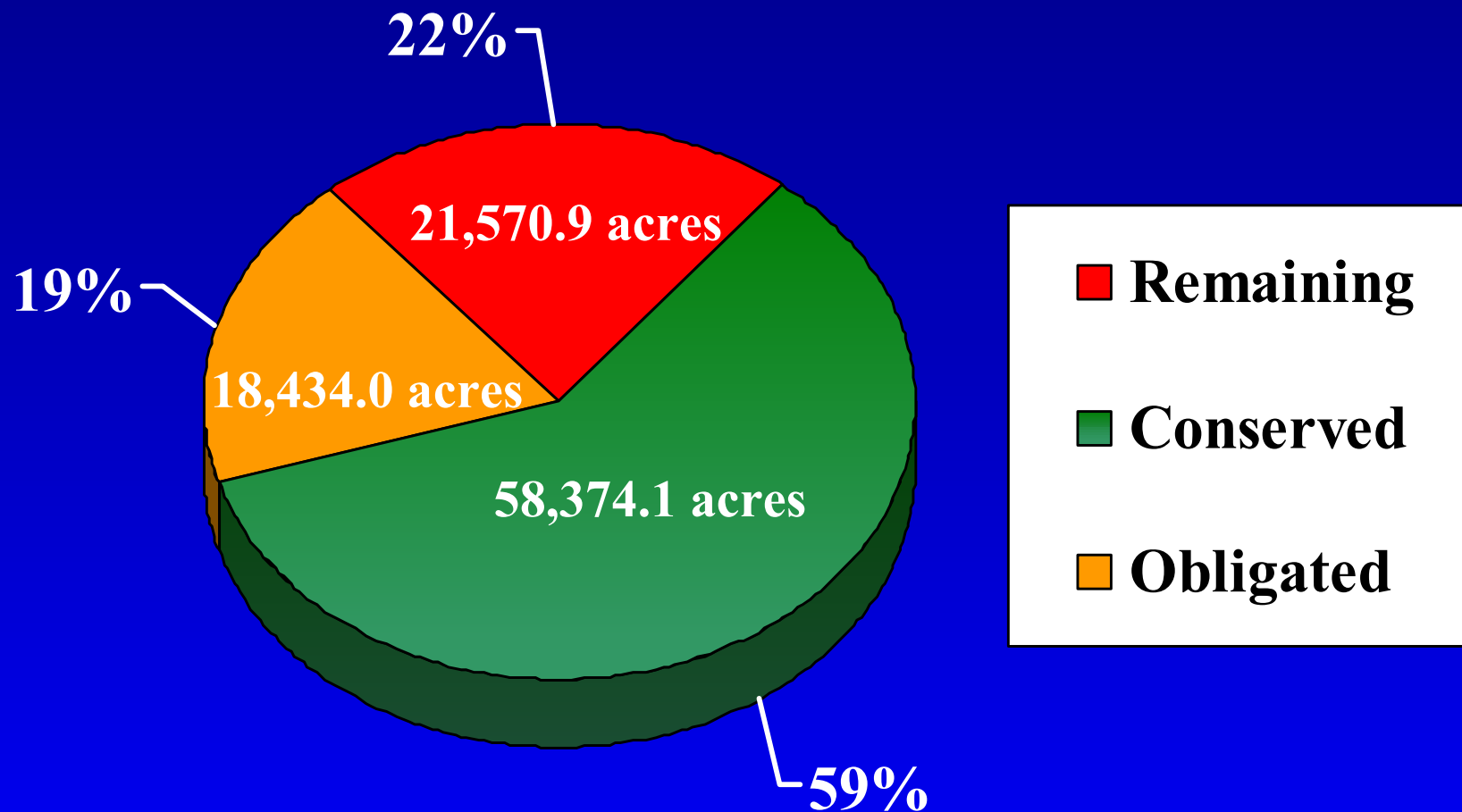


**Supervisor**  
**Ron Roberts**  
**District 4**

**Supervisor**  
**Bill Horn**  
**District 5**



# HabiTrak Report Summary



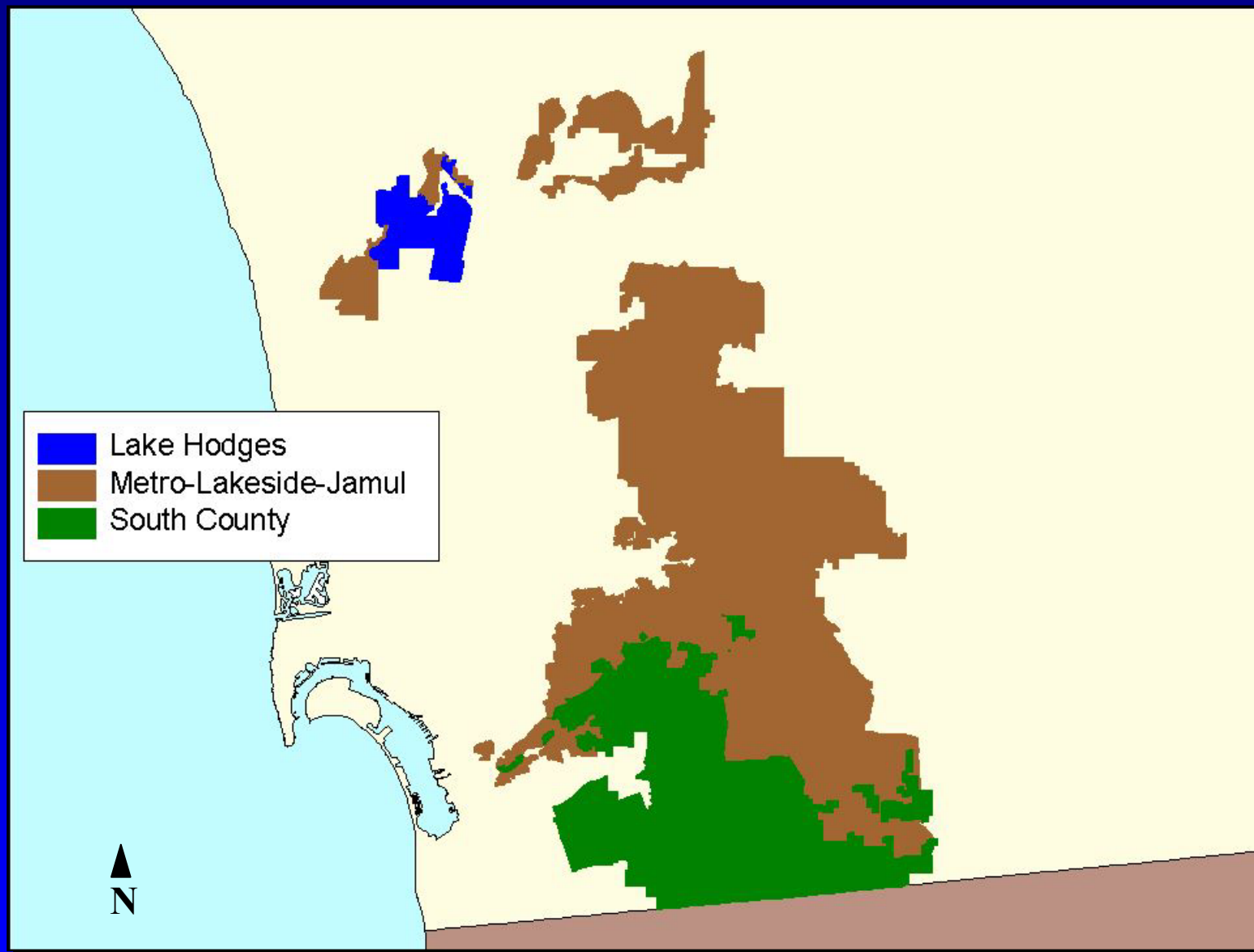
Total Conservation Goal for County MSCP: 98,379





County of San Diego

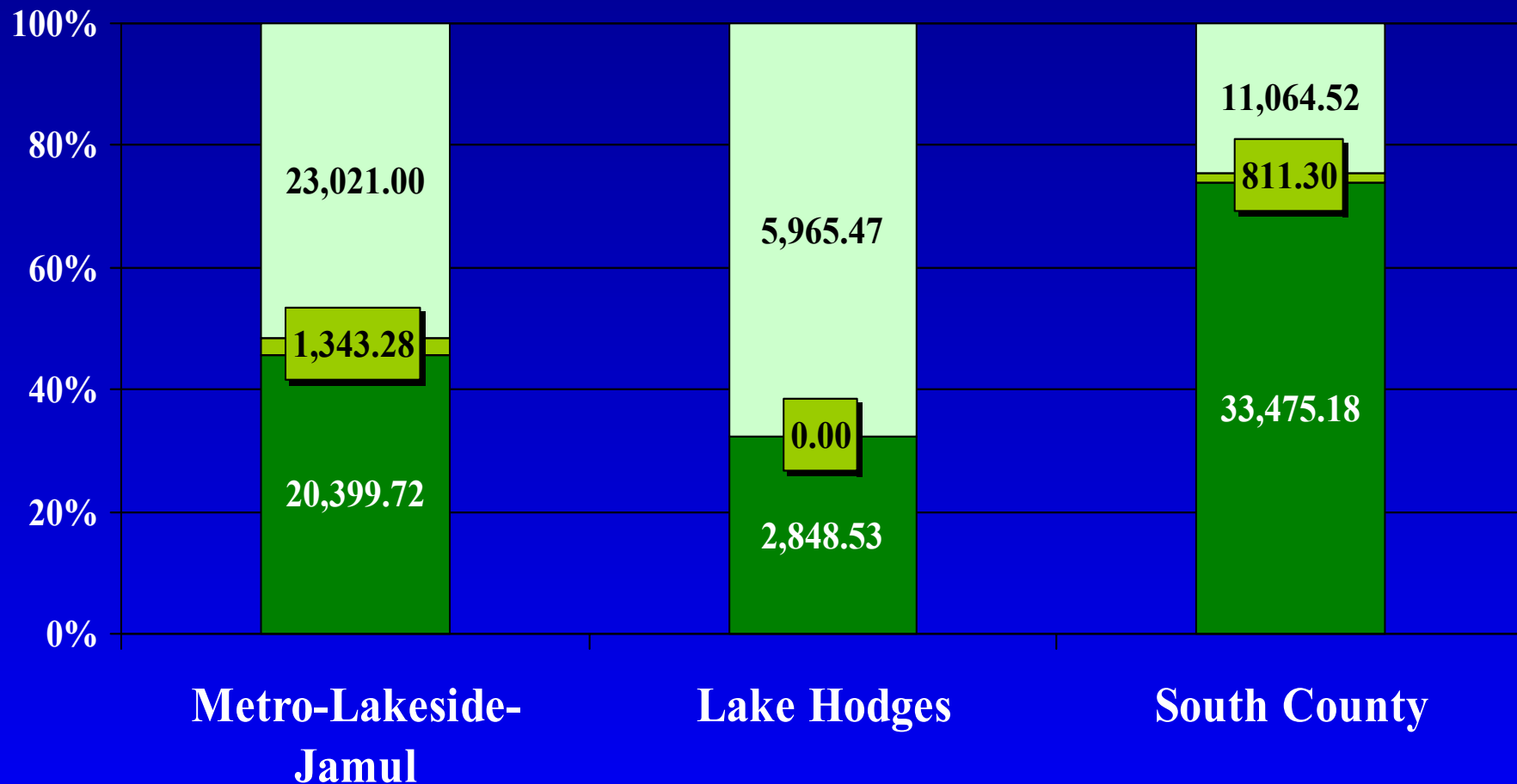
# County MSCP Segments





# Conservation Status

■ Preserved before 2003    ■ Preserved in 2003    ■ Remaining preservation goal

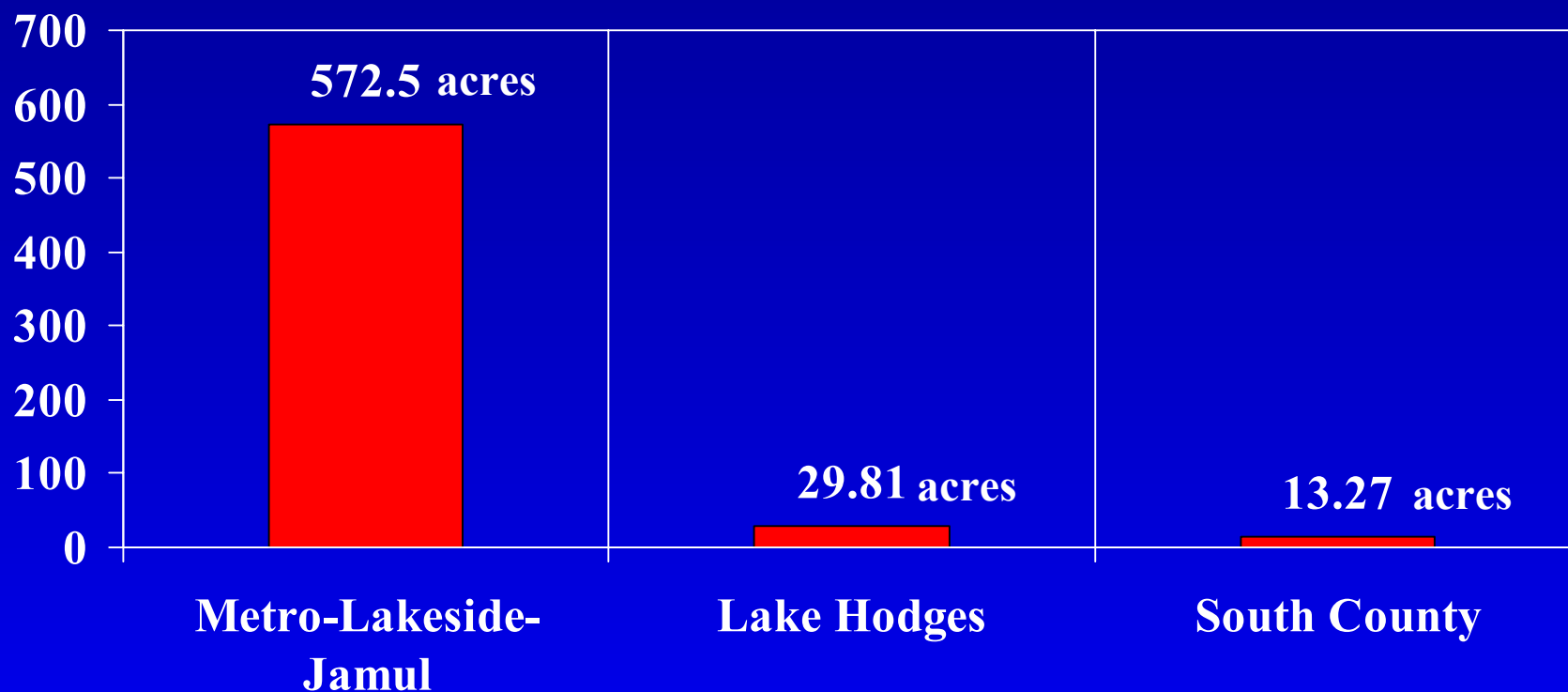


(Units are acres)



# Conservation Status

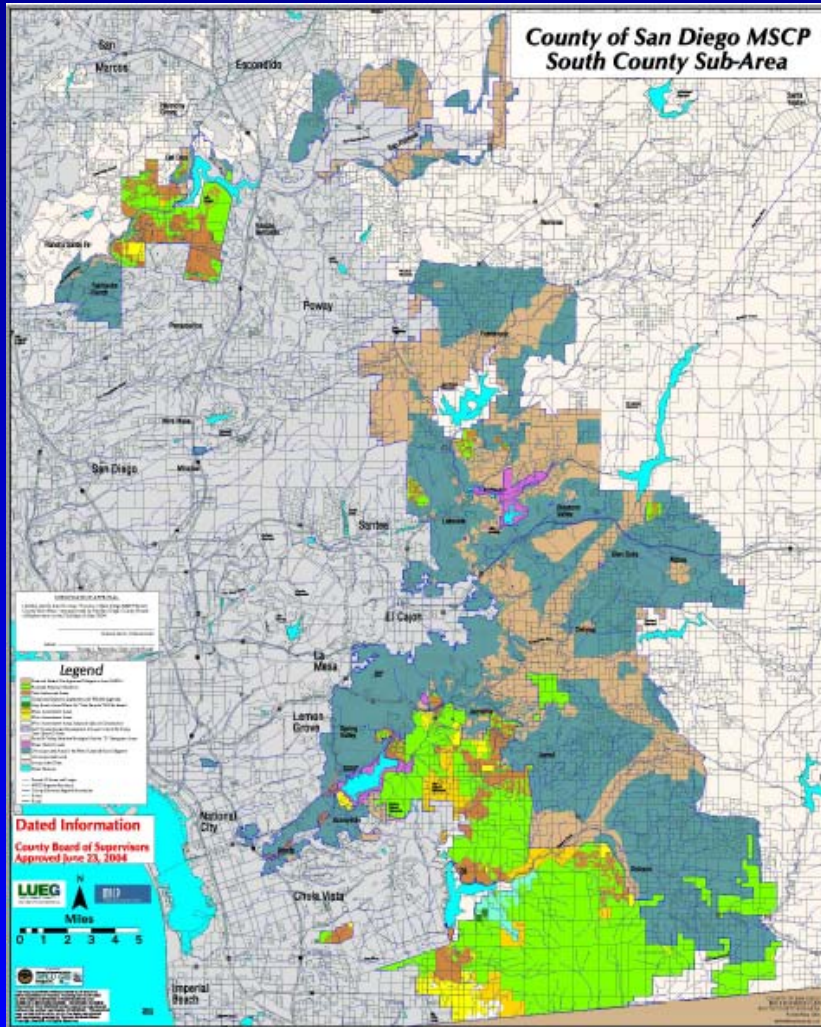
## Habitat Loss in 2003



No agricultural clearing occurred in MSCP in 2003



- Added approved amendments in Major and Minor Amendment Areas







# County Purchases



2003

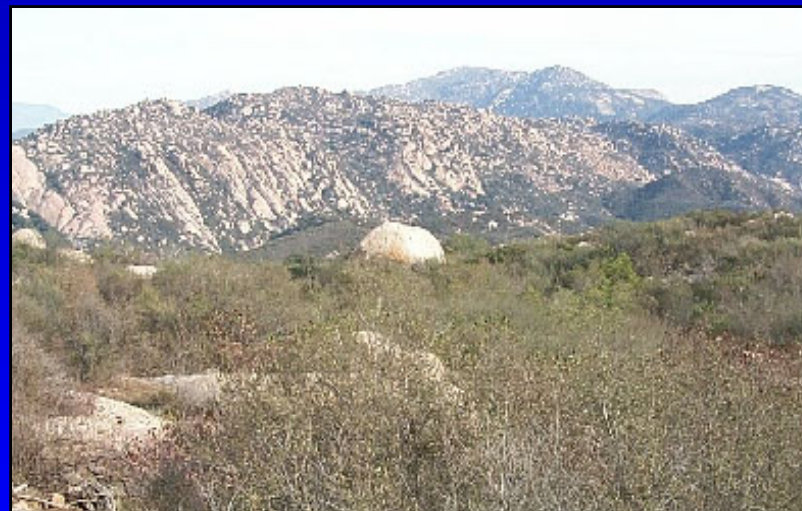
1,781.99 acres

Cumulative

4,143.18 acres

County acquisitions within MSCP occurred in:

- ▶ **Iron Mountain**
- ▶ **Wright's Field**
- ▶ **Otay River Valley**
- ▶ **Tijuana River Valley**
- ▶ **Chula Vista**
- ▶ **Imperial Beach**





# County MSCP Contributions To Date

## Federal

Total Fed \$\* \$35,985,059

Acres Acquired 8,409

## State

Total State \$\* \$40,421,392

Acres Acquired 13,340

## County of San Diego

Total County \$\* \$31,523,051

Acres Acquired 4,143.18

## Private Landowners (Est. \$18,000/acre)

Total Estimated Private \$ \$423,261,540

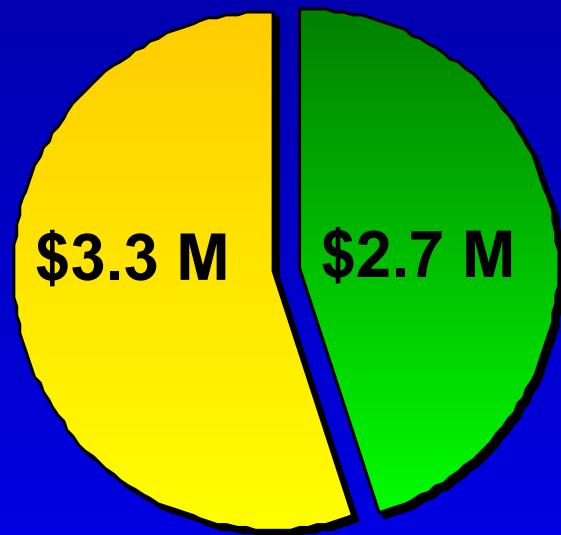
Total Private Acres 23,515

\*Includes Acquisition, Management and Monitoring



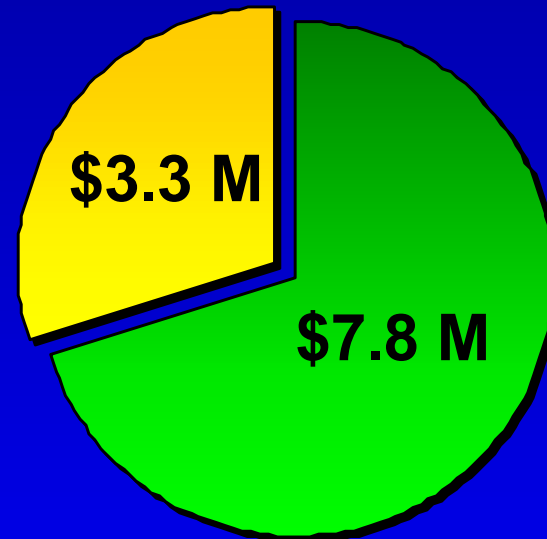
# County Parks and Open Space Funding

**FY 2002-2003**



■ Acquisition  
■ Mgmt / Monitor

**FY 2003-2004**



■ Acquisition  
■ Mgmt / Monitor



# Staff

## Department of Planning and Land Use

- Planning, implementation and monitoring
- 8 full time

## Department of Parks and Recreation

- Management, monitoring & maintenance
- 9 program
- 17 field





# Stewardship/Management Efforts

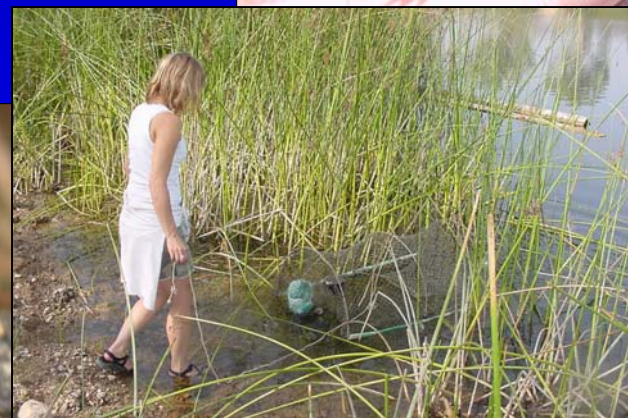
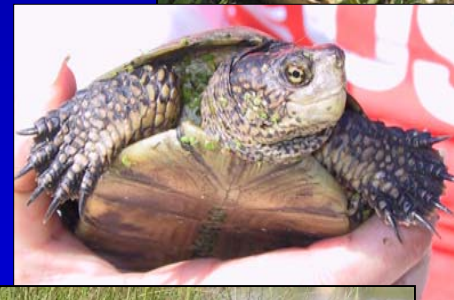
- Debris removal
- Access/perimeter control
- Trail management
- Fire/brush management
- Exotics removal/revegetation
- Urban interface
- Outreach/education
- Adaptive management
- Appropriate recreation guidance





# Species and Preserve Mgmt

- Quino surveys
- San Vicente Highlands
  - Area Specific Management Directives
  - Fire Management Plan
- Barnett Ranch Open Space Preserve
  - Area Specific Management Directives
  - Fire Management Plan
- Arroyo toad, Bat and Southwestern pond turtle surveys





# Monitoring Final Reports

- California gnatcatcher distribution study
- Rare plant surveying



Final reports available at [www.mscp-sandiego.org](http://www.mscp-sandiego.org)





# MSCP Outreach Committee

Members include:

- County of San Diego
- City of San Diego
- U.S. Fish & Wildlife Service
- California Dept of Fish & Game
- Other Public and Private Partners in preservation







County of San Diego

# MSCP Outreach Committee Activities in 2003

- MSCP Poster
- MSCP Species Brochure
- “What Now?” post-fire flyer
- Balboa Park Earth Fair



- “Urban Planning in the Classroom” high school curriculum
- Discovery kit program
- Communities Alive in Nature



County of San Diego

# North County Subarea Plan Issues

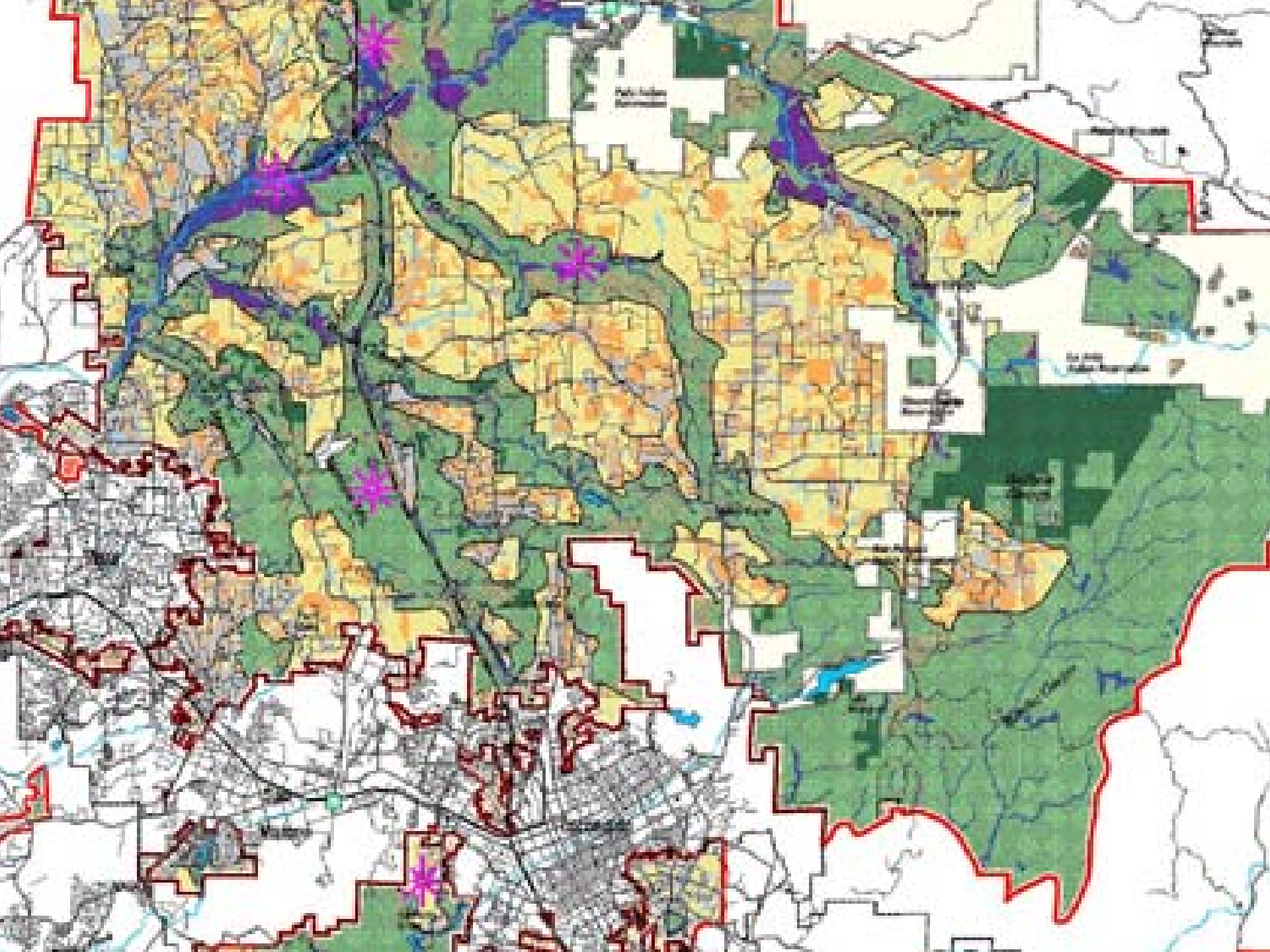






# North County MSCP









# North County Subarea Plan

- Finalize Conservation Analysis
- Continue “Hard Line” discussions
- Select Consultant for EIR/EIS



## Additional Activities



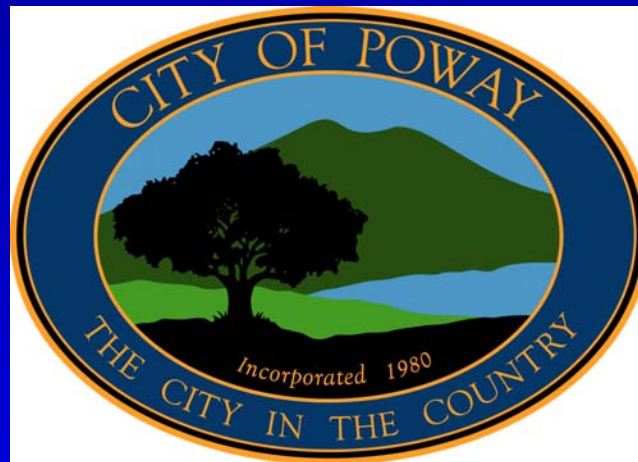
San Felipe Valley from Volcan Mountain

- East County Plan
- Quino Amendment



# City of Poway

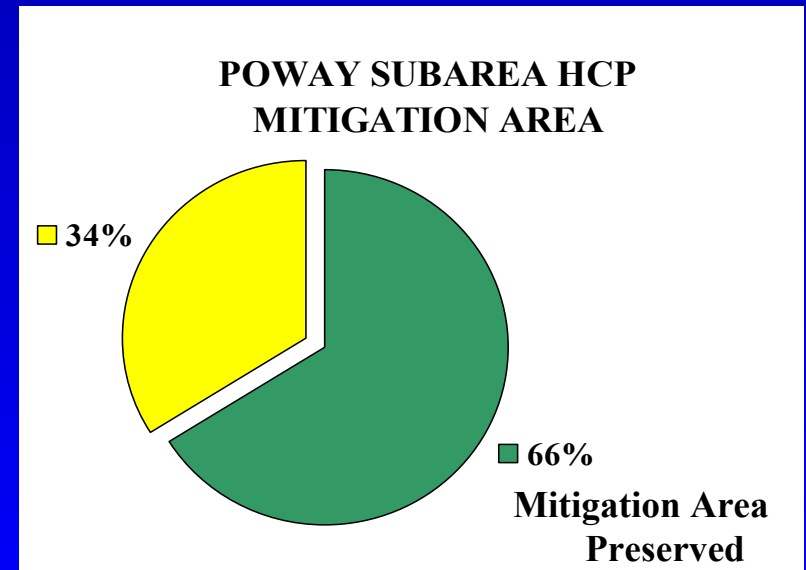
---





# Habitat Preservation

- The City of Poway is 25,047 acres in size
- Natural habitat to be preserved within the HCP Mitigation Area: 10,800 acres or 43% of the City
- Natural habitat preserved within the Mitigation Area : 5,517 acres







# Habitat Acquisition

Natural habitat acquired by the City  
within the Mitigation Area:

206 acres



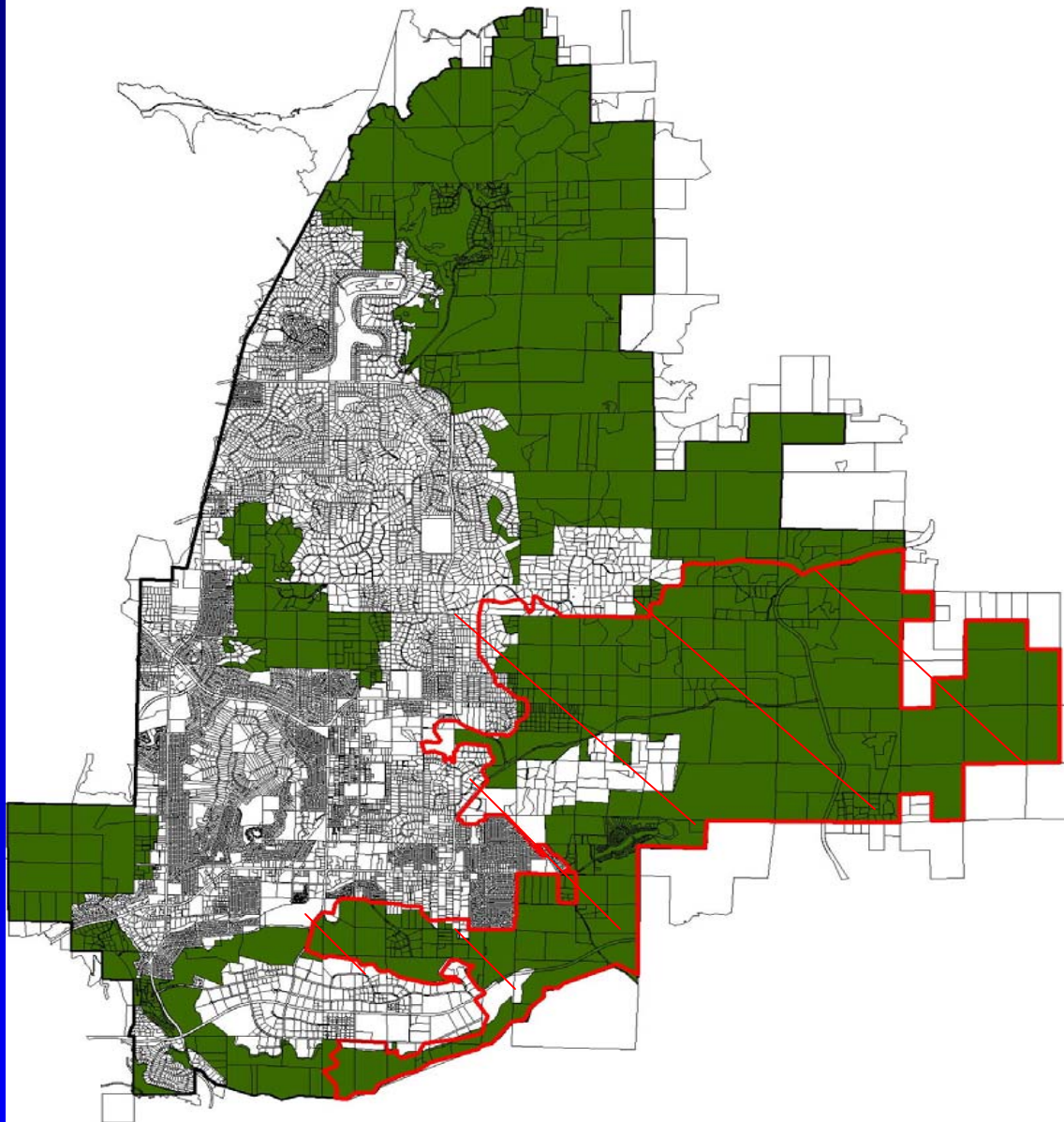


# October 2003 Fires

■ Poway Mitigation Area

— Extent of burned area

**6,200 acres or  
approximately  
½ of our Mitigation  
Area burned**







# Monitoring Activities

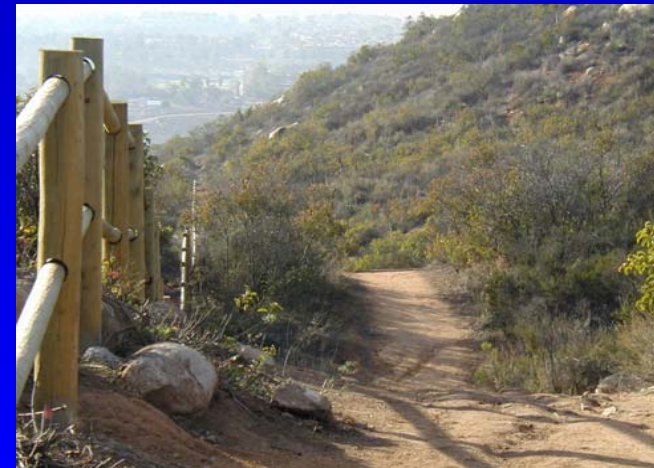
- Road kill incidence study
- Assist in wildlife corridor monitoring
- Biological surveys
- Non-native species particularly in fire areas
  - **Arundo**
  - **Tamarisk**
  - **Pampas grass**
  - **Tree tobacco**
  - **Pepper trees**
  - **Wild artichoke**





# HCP Management Activities

- Erosion control
- Habitat restoration and revegetation
- Removal of exotic/invasive plant species
- Removal of illegal encampments
- Removal of illegal dumping
- Maintenance of trail and sign programs to prevent intrusion into HCP lands







# Land Use Challenges



- Voters opposed a land owner ballot initiative that:
  - Proposed rezoning 20 acres of rural residential land to automotive general commercial located in the center of the City's Mitigation Area
- Approval could have lead to:
  - Quadrupling of the existing residential density
  - Loss of significant amounts of unplanned habitat within the Mitigation Area
  - Disruption of wildlife corridors



# City of San Diego

---





## 2003 Accounting (acres)

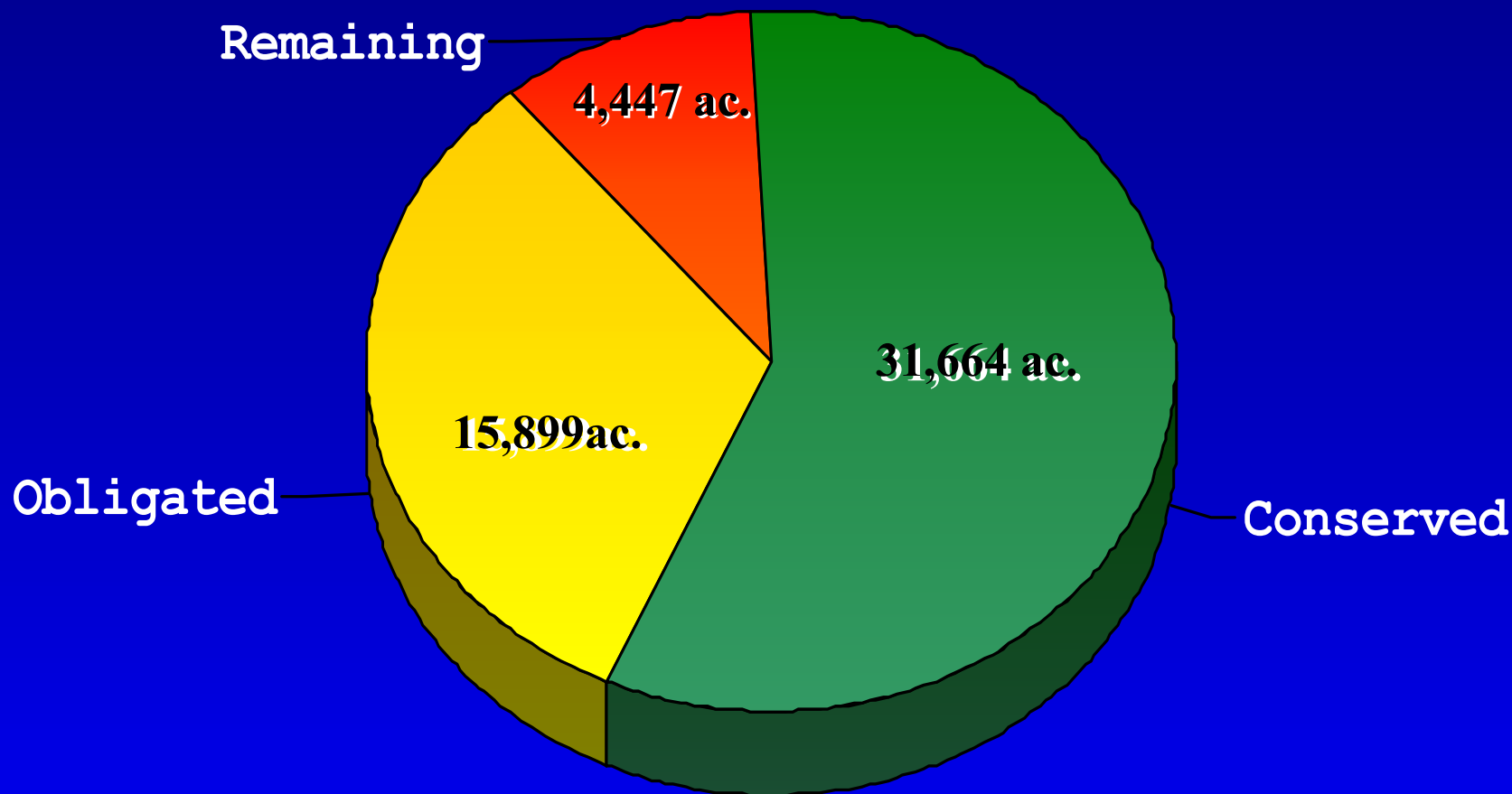
	<u>Inside MHPA</u>	<u>Outside MHPA</u>
--	--------------------	---------------------

Habitat Gain:	600.0	58.3
---------------	-------	------

Habitat Loss:	122.8	692.5
---------------	-------	-------



# Conservation Status



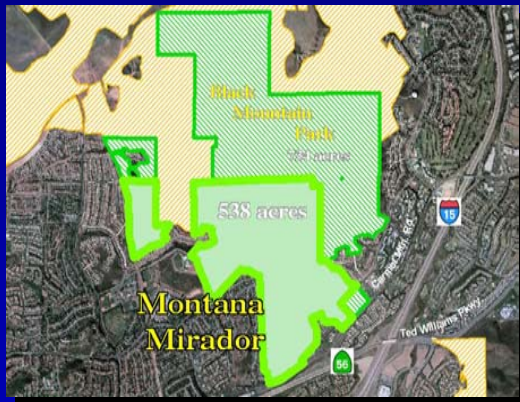
Goal: 52,012 acres

\*An additional 1,277.4 acres have been conserved outside the MHPA.





# Status of Key Acquisition Targets



## Montana Mirador

100% Conserved (538 acres)



## Del Mar Mesa

Completed Acquisition  
from Willing Sellers  
65% Conserved (566 acres)



## East Elliott

Completed Offers and  
Acquisition from Willing Sellers  
13% Conserved (294 acres)



## Otay Mesa

In Process 21% Conserved (208 acres)



## San Diego River

In Planning Process



## 2003 Public Acquisitions - in City of San Diego

- **Hazana Property East Elliot (Feb. 2003) .....8.8 acres**
- **Del Mar Mesa Acquisition (Feb. 2003).....14.7 acres**
- **East Elliot Acquisition(Feb. 2003).....17 acres**
- **Wahl-Hudson Caltrans Mitigation (Oct. 2003)..80 acres**

---

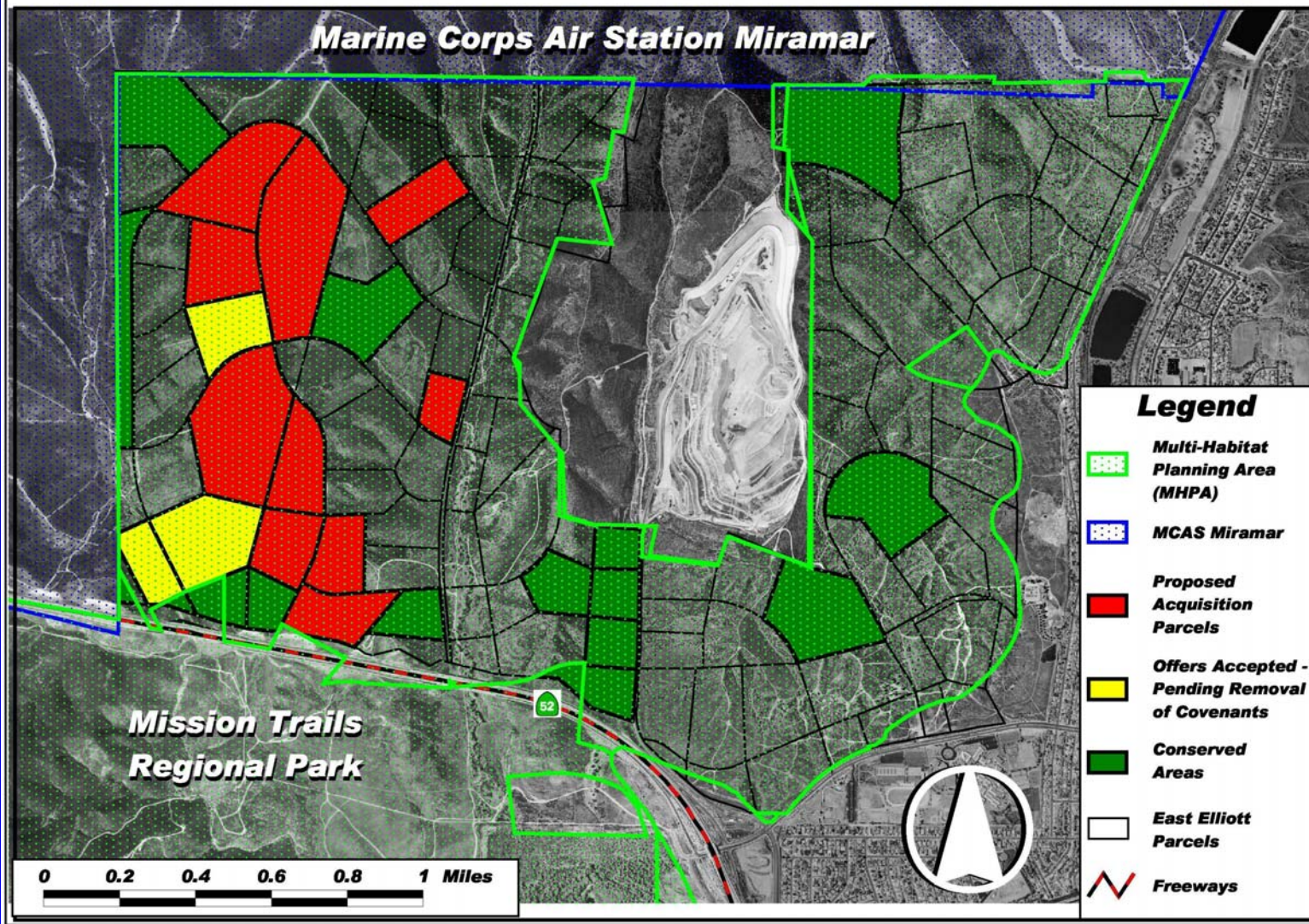
**Total = 120.5 acres**





# East Elliott Acquisition Area

City of San Diego Planning Department - MSCP



300 acres in Escrow. 65 acres pending Escrow.  
Restrictive Covenants Removed



# Grant Awards 2003

- **Management and monitoring**
  - **NCCP Implementation grants (3)**
  - **ECF grant (1)**
- **Acquisition**
  - **Section 6 Federal grant (1)**





# Biological Monitoring

**Habitat Quality/Remote Sensing (City/SDSU) (July 2003)**

**Priority (1-3) Plant Monitoring – 10 species in 2003,  
8 species in 2004 (City) (Annual spring surveys)**

**Quino Checkerspot Butterfly (Completed 6 years of monitoring)**

**Monitoring and Management Database (March 2005)**

**Burrowing Owls and Raptors (WRI) (March 2003)**

**Vernal Pool Remote Sensing (SDSU) (Feb. 2003 – Sept. 2003)**

**Vernal Pool Citywide Inventory (City) (Feb. 2003 – Sept. 2003)**

**California Gnatcatcher Monitoring (City, County, USFWS, CDFG)  
(March 2004 – April 2004)**

**For copies of reports: [HCheong@san Diego.gov](mailto:HCheong@san Diego.gov)**

# Post Fire Monitoring

**12,790 City MHPA acres affected by Otay and Cedar fires**

- Vernal pool monitoring – Mission Trails, Otay Lakes, Proctor Valley
- Variegated dudleya – Mission Trails, Otay Lakes, East Elliott
- San Diego thornmint – Mission Trails, Otay Lakes
- Willowy monardella – Otay Lakes, Sycamore Canyon
- Otay tarplant – Proctor Valley



# 2003 Monitoring - Completed



Orcu



San



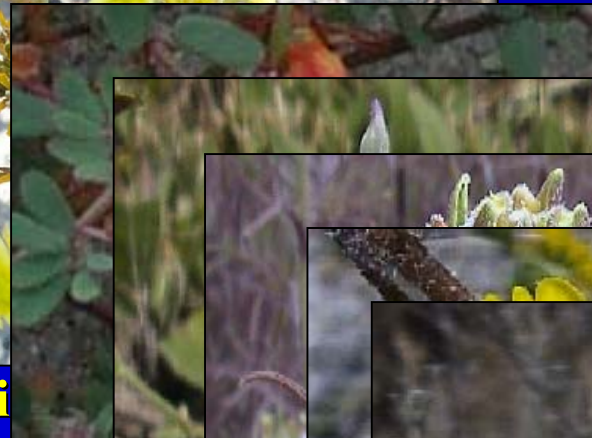
Shor



Willo



Vari



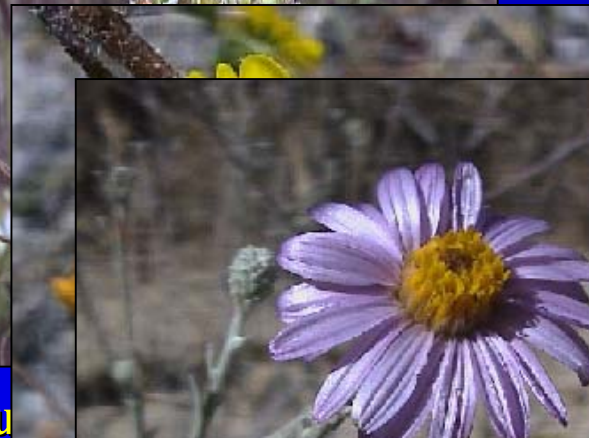
Nutt



San



Orcu



Ot



Del Mar Sand

Aster

10 Species



# 2004 Monitoring – Ongoing



San



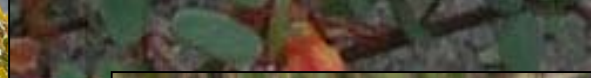
Shor



Willow



Vari



Nutt



San



Orcu



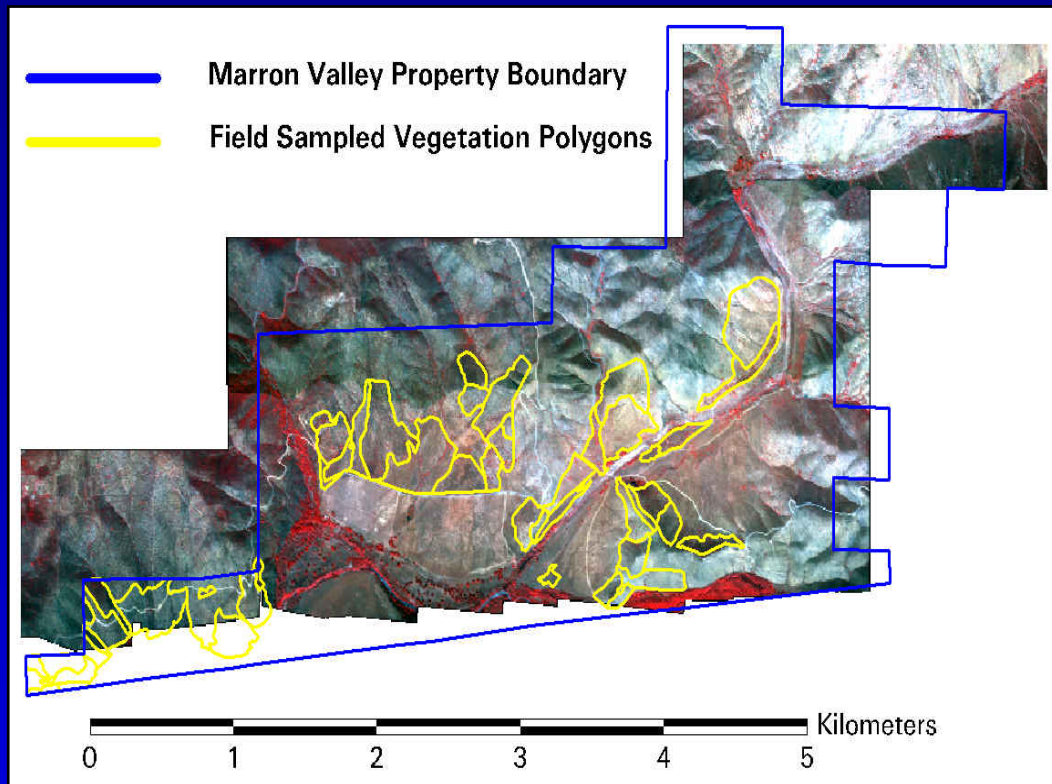
Otay Tarplant

8 Species





# Marron Valley Remote Sensing Habitat Quality Project



**DRAFT FINAL completed**

## RESULTS

- ❖ Cost effective for large areas
- ❖ Identify areas of “change” or “no change” (i.e. fire)
- ❖ Categorical data of brush, herbaceous, and bare ground
- ❖ Recommendations provided



City of San Diego

# City Vernal Pool Management Plan Grant

**2482 vernal pools recorded**

- ▶ **GPS locations of basins**
- ▶ **Vernal pool plant inventory**
- ▶ **Presence/absence fairy shrimp and herpetofauna**
- ▶ **Cover estimates of rare and endangered plants**
- ▶ **Fairy shrimp genetic research**



**Comprehensive Vernal Pool Inventory (Completed Fall 2003)**

**Public Workshop November 6, 2003**

**Comments Received and Incorporated**

**Final is Available**



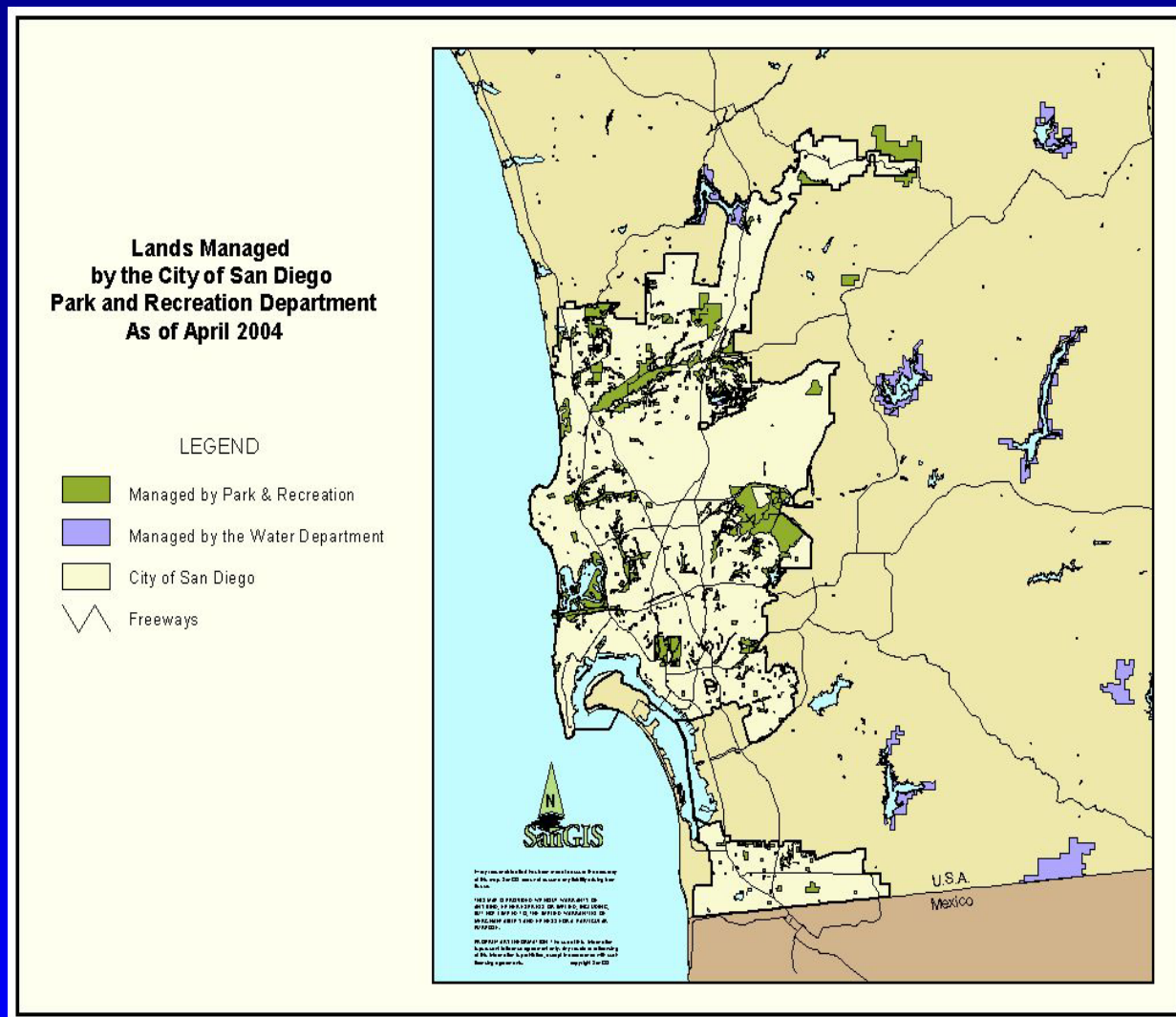
# City Vernal Pool Management Plan Grant

- **Update of Vernal Pool Management Plan for City of San Diego Jurisdiction**
- **Draft in Fall 2004**
- **Public Review Proposed**



City of San Diego

# Lands Managed by City of San Diego Park & Recreation Department







# **Park and Recreation**

## **Natural Resource Management Plans**

### **COUNCIL ADOPTED NATURAL RESOURCE MGNT. PLANS**

<b>Mission Bay</b>	<b>(Apvd. 1990)</b>
<b>Famosa Slough</b>	<b>(Apvd. 1993)</b>
<b>Marian Bear Memorial Park</b>	<b>(Apvd. 1994)</b>
<b>Los Peñasquitos Canyon</b>	<b>(Apvd. 1998)</b>
<b>First SD River Improvement Project</b>	<b>(Apvd. 2004)</b>

### **AREA SPECIFIC MANAGEMENT DIRECTIVES**

<b>Pacific Highlands Ranch</b>	<b>(Apvd. 2000)</b>
<b>Mission Trails San Diego Ambrosia Plan</b>	<b>(Apvd. 2000)</b>
<b>Rancho Encantada</b>	<b>(Apvd. 2001)</b>
<b>Marron Valley</b>	<b>(Apvd. 2001)</b>
<b>San Pasqual/Lake Hodges</b>	<b>(Apvd. 2003)</b>



# **Park and Recreation**

## **Natural Resource Management Plans**

### **FUTURE**

<b>Western Otoy Valley Regional Park (NRMP)</b>	<b>(Est. 2004)</b>
<b>Carmel Mountain and Del Mar Mesa (ASMD)</b>	<b>(Est. 2004)</b>
<b>Boden Canyon (ASMD)</b>	<b>(Est. 2004)</b>
<b>Black Mountain Open Space</b>	<b>(Est. 2004)</b>
<b>San Diego River (west of Mission Trails) (NRMP)</b>	<b>(Est. 2005)</b>



# **Park and Recreation - Open Space Enhancement/Restoration Projects**

**Since July 2001 (excludes mitigation projects)**

- **Enhancement – 209 total acres**
- **Restoration – 36 total acres**
- **Example: 500 riparian trees planted and about 2,000 tons of trash removed to date in Otay Valley Regional Park**



City of San Diego

# Park and Recreation Partnership Projects

Boy Scouts of  
America Help Out



Channel 8 Volunteer  
Family Days Help  
With Enhancement  
Projects





# Brush Management



**Brush Management Trial with Goats**



**Brush Management Crews at Work**





City of San Diego

# Park and Recreation Programs

## Fire Remediation – Mission Trails Regional Park



**Erosion Prevention After Fire**

**Sediment Traps**



# **The Role of NGOs in Habitat Conservation**

Presented by Mike Kelly  
San Diego Conservation  
Resources Network

# Mission Statement

*Support the network of citizen resource conservancies involved in preservation & stewardship of the natural & cultural resources of San Diego County & promote public understanding of conservation issues*



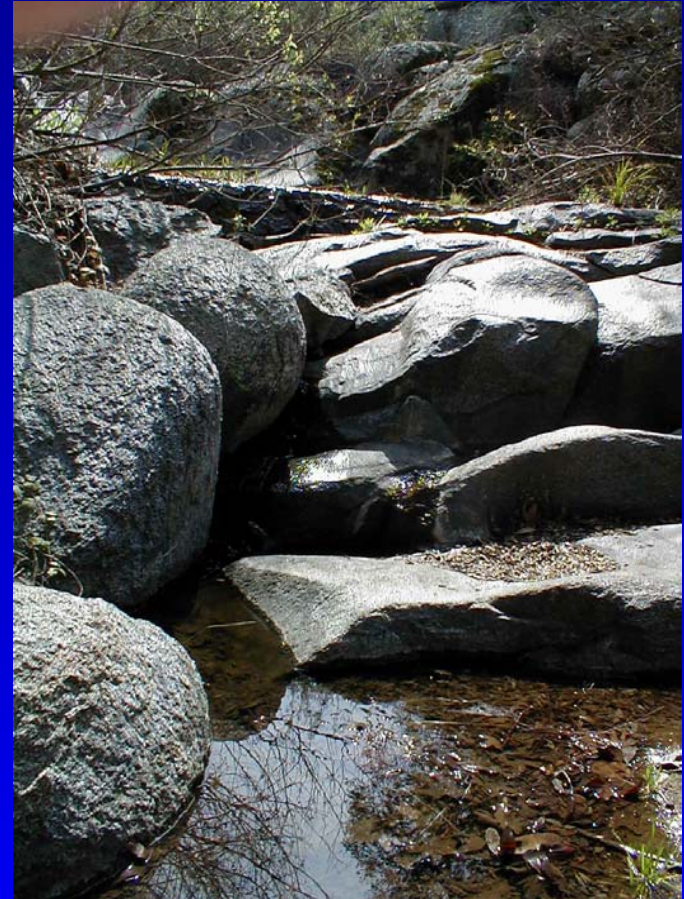
SAN DIEGO  
CONSERVATION  
RESOURCES NETWORK

GROWING PARTNERSHIPS FOR CONSERVATION



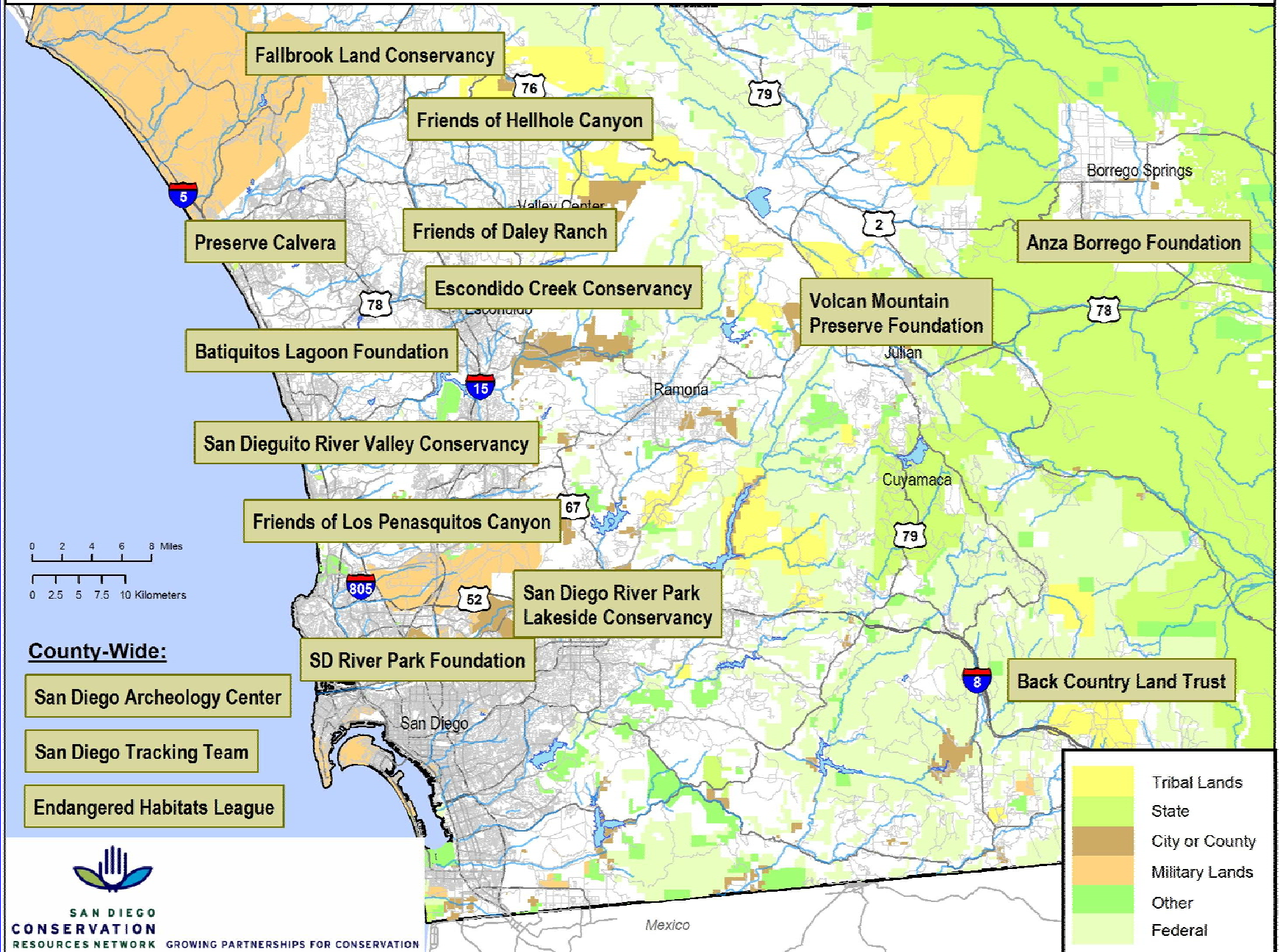
# General Role

- Acquisition and management of lands
- Management of publicly owned lands
- Support for public acquisitions
- Advocacy for conservation programs



*Hellhole Canyon*

# San Diego Conservation Resources Network Where We Work





# Fallbrook Land Conservancy

- Own and manage more than 600 acres on 9 preserves
- Partner with the County on the management of 18 acres of open space
- Entering management agreement for trail system on the Santa Margarita Open Space Preserve
- Manage the historic Palomare House, built ca 1890

# Fallbrook Land Conservancy

- Regular plant and animal surveys
- Full time preserve manager
- Operate a native plant nursery with over 4,000 trees and shrubs for restoration projects



# Friends of Hellhole Canyon Open Space



# Friends of Hellhole Canyon Open Space

- Brown Parcel, 155.54 acres



Purchase option & land cost: \$425,000.

Important connectivity & regional corridor, parcel in heart of Canyon surrounded on three sides by Preserve.

# Preserve Calvera

- Interpretive hikes
- Wildlife surveys
- Educational programming
- Fundraising activities

# **Friends of Daley Ranch**

- Spearheaded effort to “save” Daley Ranch
- Hikes
- Plant and animal surveys
- Management activities
- Partnering with City of Escondido



# San Elijo Lagoon Conservancy

- Parcel 1. Van Liew 15 acres - Closed Escrow 4/29/04 Bought from the Rancho Santa Fe Foundation - they are putting the funds into an endowment for us to manage the property.
- Parcel 2. Manchester 19.5 acres - Closed in 2002. Grant from the California Coastal Conservancy went to us and we turned it over to the County. The County owns the Property.



# Escondido Creek Conservancy

- Invasive Weed Control
- Support for acquisitions
- Interpretive program
- Recently completed acquisition

# Batiquitos Lagoon Foundation

- Bird Surveys
- Interpretive Hikes
- Volunteer Patrols
- Trash Pickups
- Planting
- Invasive Weed Removal





# Batiquitos Lagoon Foundation





# **San Dieguito River Valley Conservancy**

- 2 Full Time Staff
- Bernardo Mountain Acquisition – Fundraised and Partnered with County and Caltrans
- Invasive Weed Control
- Interpretive Program

# San Diego River Park Foundation

## Recent Accomplishments

- Acquisition of 110 Acre “White Canyon” property near Wynola
- Helping broker acquisition of 126 acres adjacent to El Capitan Reservoir, City of SD Water to be title holder



# San Diego River Park Foundation



- In Escrow for 110 Acre “Eagle Peak Preserve” near Mildred Falls
  - Coastal Sage Scrub, Oak, Chaparral
  - Proposed critical habitat for coastal California gnatcatcher
  - SDRPF to manage site



# **San Diego River Park – Lakeside Conservancy**

- 80+ acre acquisition and wetlands creation project in progress
- 3 full-time staff
- Wildlife corridor protection



# **Volcan Mountain Preserve Foundation**

- Full Time Executive Director
- Interpretive Programs
- Partner with County on Acquisitions
- Active Fundraising Program

# Canyons Campaign

- 27 new “friends” group  
County-wide
- Education
- Management
- Public outreach &  
stewardship building



Normal Heights tour

# Back Country Land Trust



- Own 230 acres of 400 acre Wright's Field Preserve in Alpine
- Hold option for additional 145 acres

# Back Country Land Trust



- Interpretive Walks
- Plant and bird surveys
- Regular community clean-ups
- Exotic weed removal
- Plantings
- Partnering with County of San Diego and school district on efforts





# San Diego Tracking Team



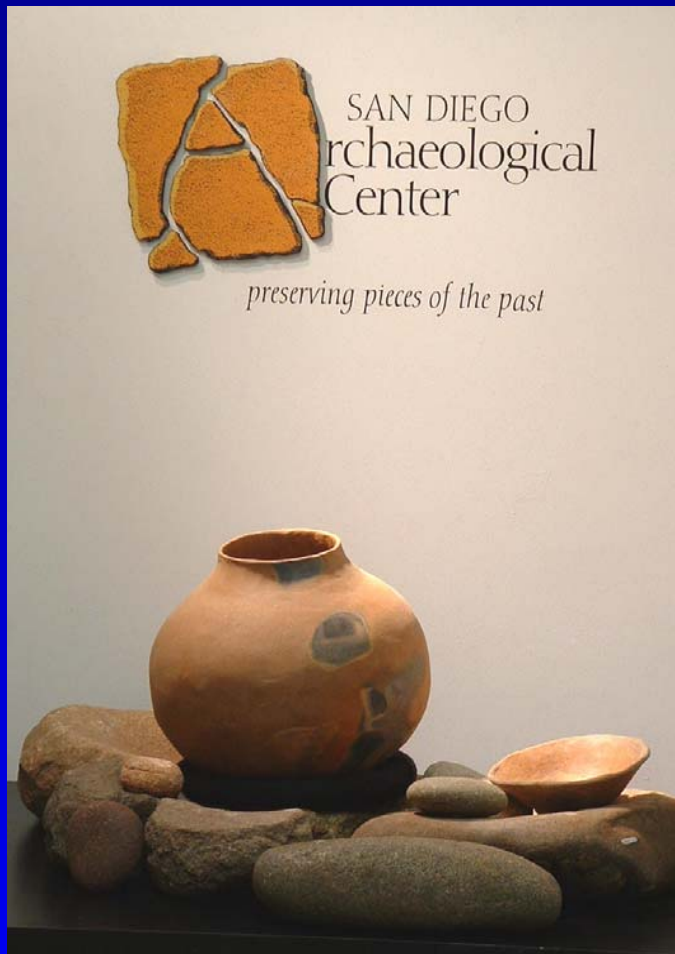
- 10 years of tracking data
- Public outreach and education
- Volunteer training



# Endangered Habitats League

- Managing 2650 acre Crestridge Ecological Reserve
- Interpretive Programs
- Earth Discovery Institute
- Invasive Weed Removal
- Fire Recovery Projects

# San Diego Archaeology Center



- Federally approved curation facility
- Education
- Public outreach, e.g.. airport and Rose Canyon displays
- 10,000 year old artifacts in collection

## Example of Other Groups

- Anza Borrego Conservancy
- Audubon Society
- Friends of Los Penasquitos Canyon Preserve
- Friends of Famosa Slough