

2022 SDMMP Rare Plant Discovery Surveys, Inspect and Manage Monitoring, and Valley Fire Surveys



Jessie Vinje (CBI), Margie Mulligan (CBI), Diana Brand-Ramirez (AECOM), &
Dr. Kristine Preston (SDMMP)
San Diego Association of Governments
November 16, 2022



2022 SDMMMP Rare Plant Program Tasks

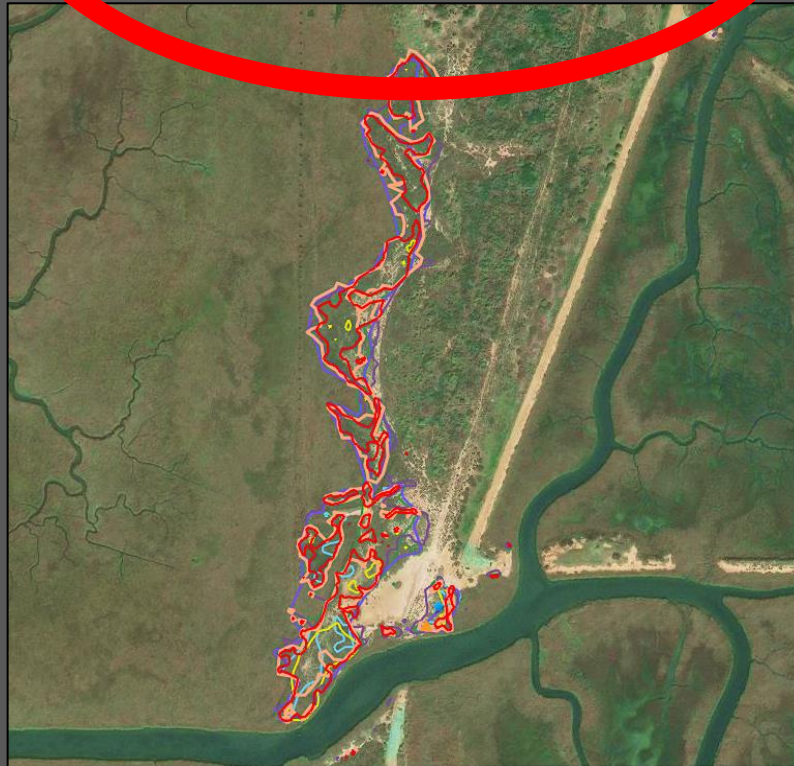
Discovery Surveys

Example MSP Objective: MON-SURV-SPEC
APHBLI-3



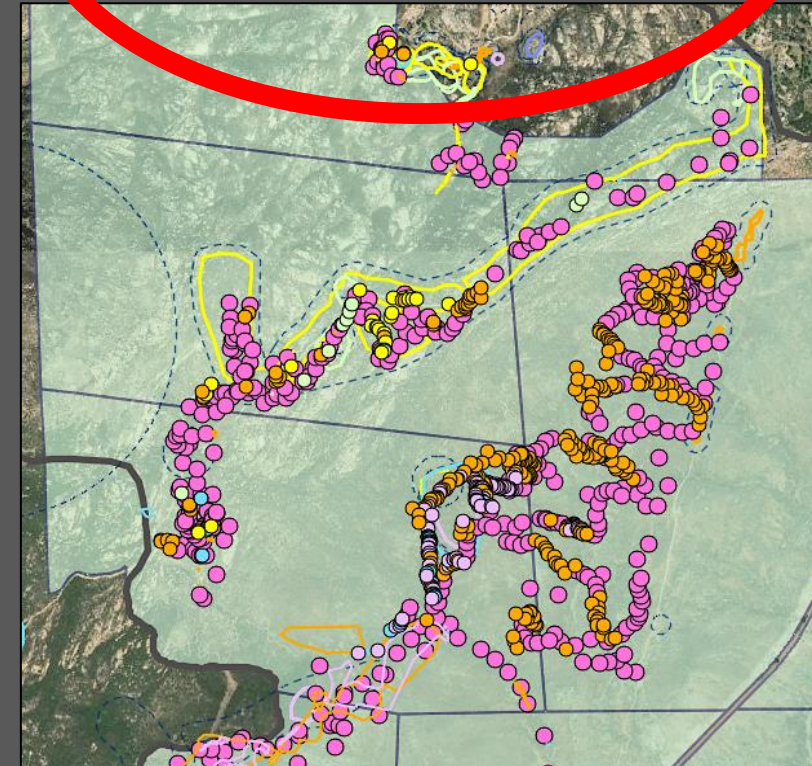
Inspect and Manage

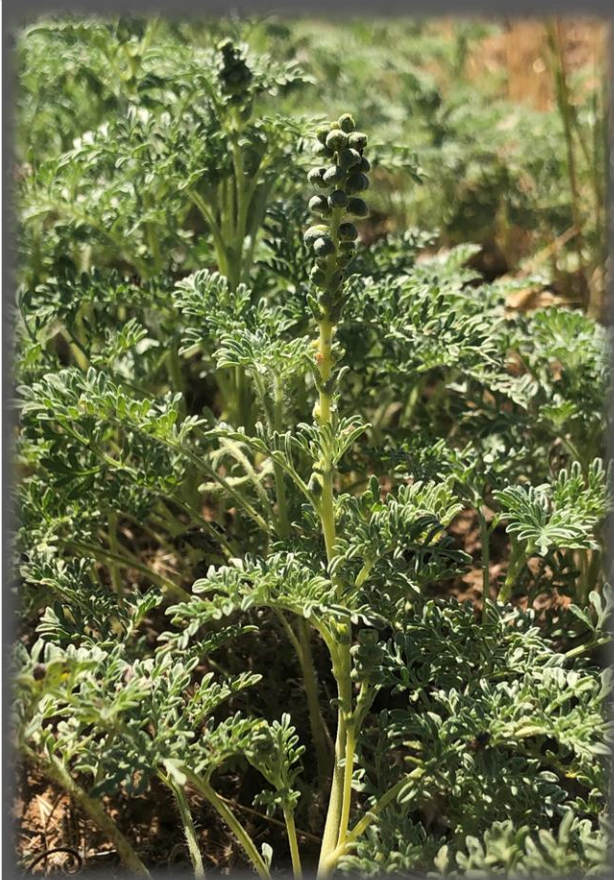
Example MSP Objective: MON-IMP-IMG CHLMAR-1



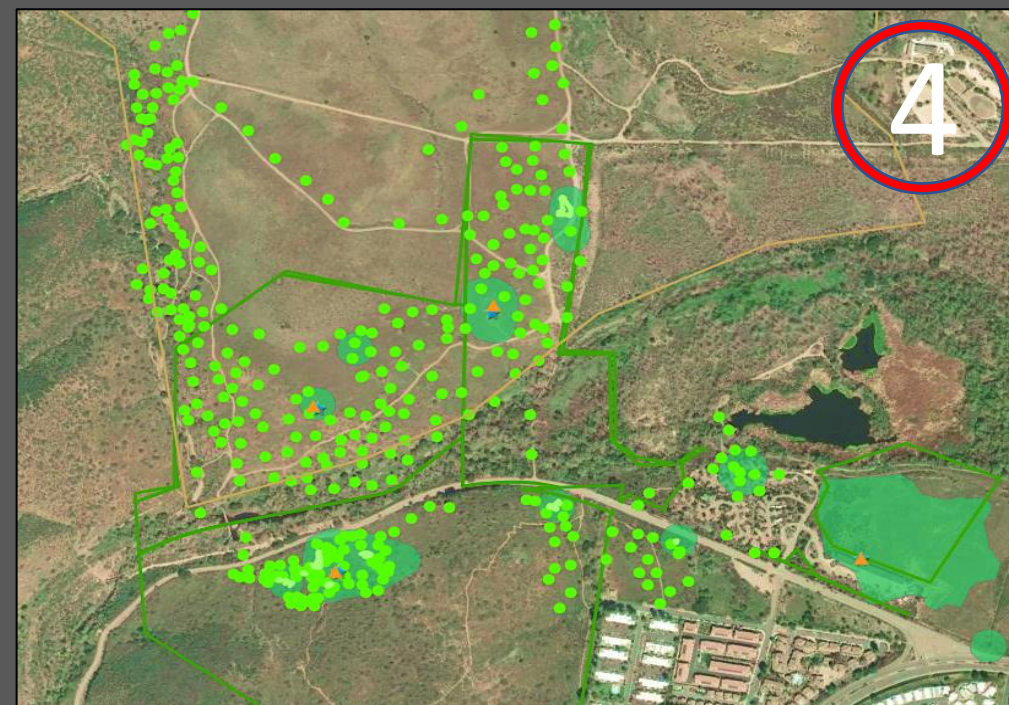
Valley Fire - Post-fire Surveys

Example MSP Objective: MON-SURV-FMGT
ALTfir-12

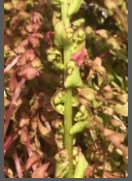




Rare Plant Discovery Surveys



2022 Discovery Survey Highlights



Located many new populations. Additional occurrences and populations still possible. Difficult to locate/observe during dry years (4-5 leaves on a plant in 2022, very difficult to see).



Located 4 new occurrences - Carlsbad (3) and Chula Vista (1). Very exciting to find this species in additional locations. Search *Acanthomintha* clay lens habitat for additional populations.



Located new populations at Mission Trails, Gillespie Field, and the San Diego River. Lower likelihood of finding new occurrences, but still possible.



Located new populations in known occurrences and one new occurrence. Some newly detected populations did not align with previously mapped populations. Spatiotemporal variation? Additional undetected occurrences and populations?

Take-home message – We continue to locate new occurrences and populations each year. Preserve managers consider conducting ongoing annual surveys to obtain precise and accurate baseline data for target species.



Rare Plant Inspect and Manage Monitoring



Diana Brand-Ramirez



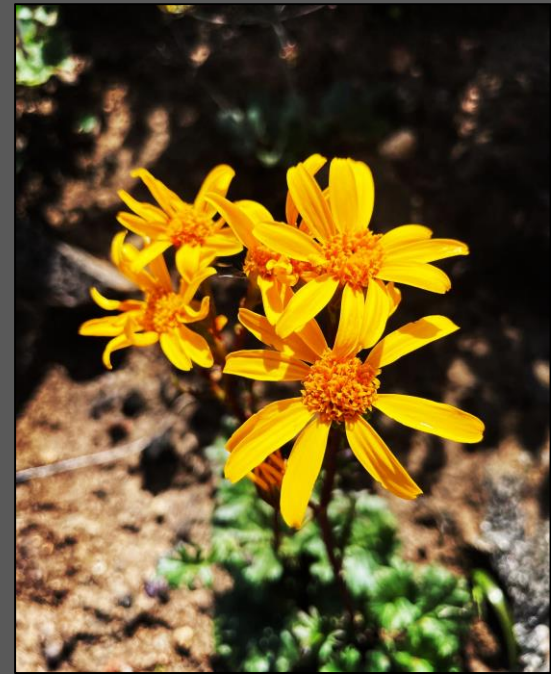
2022 Rare Plant Inspect and Manage Highlights

- SANDAG-funded effort (7 years in a row!).
- Forty-one (41) different San Diego County entities participated in the IMG effort.
- Surveyors conducted 195 monitoring events.
- Surveyors monitored 15 species (SDMMP identified 13 plants and land managers identified an additional 2 plants).

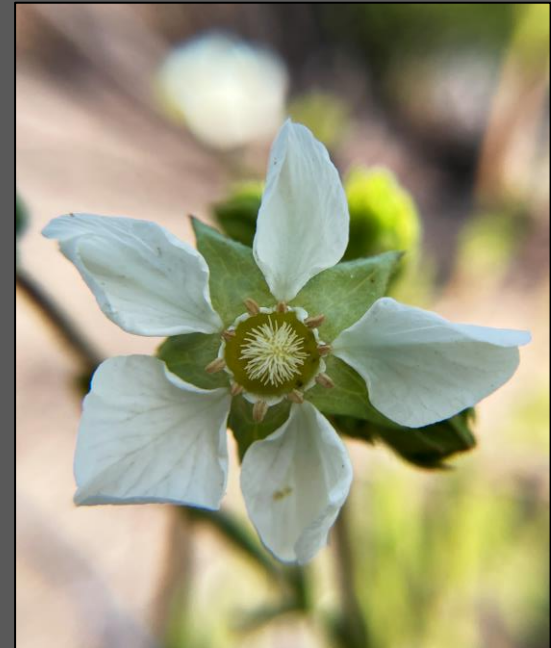


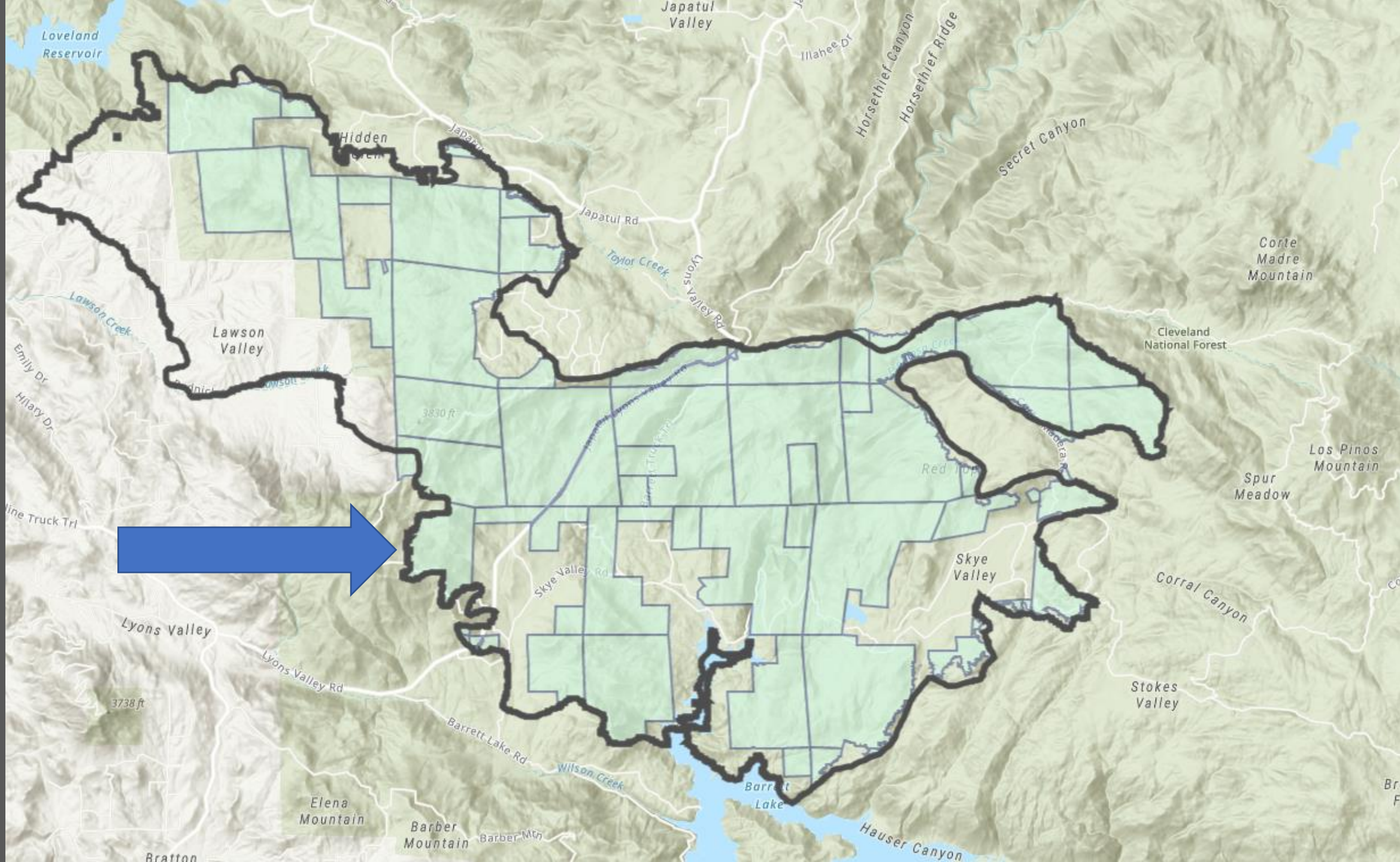


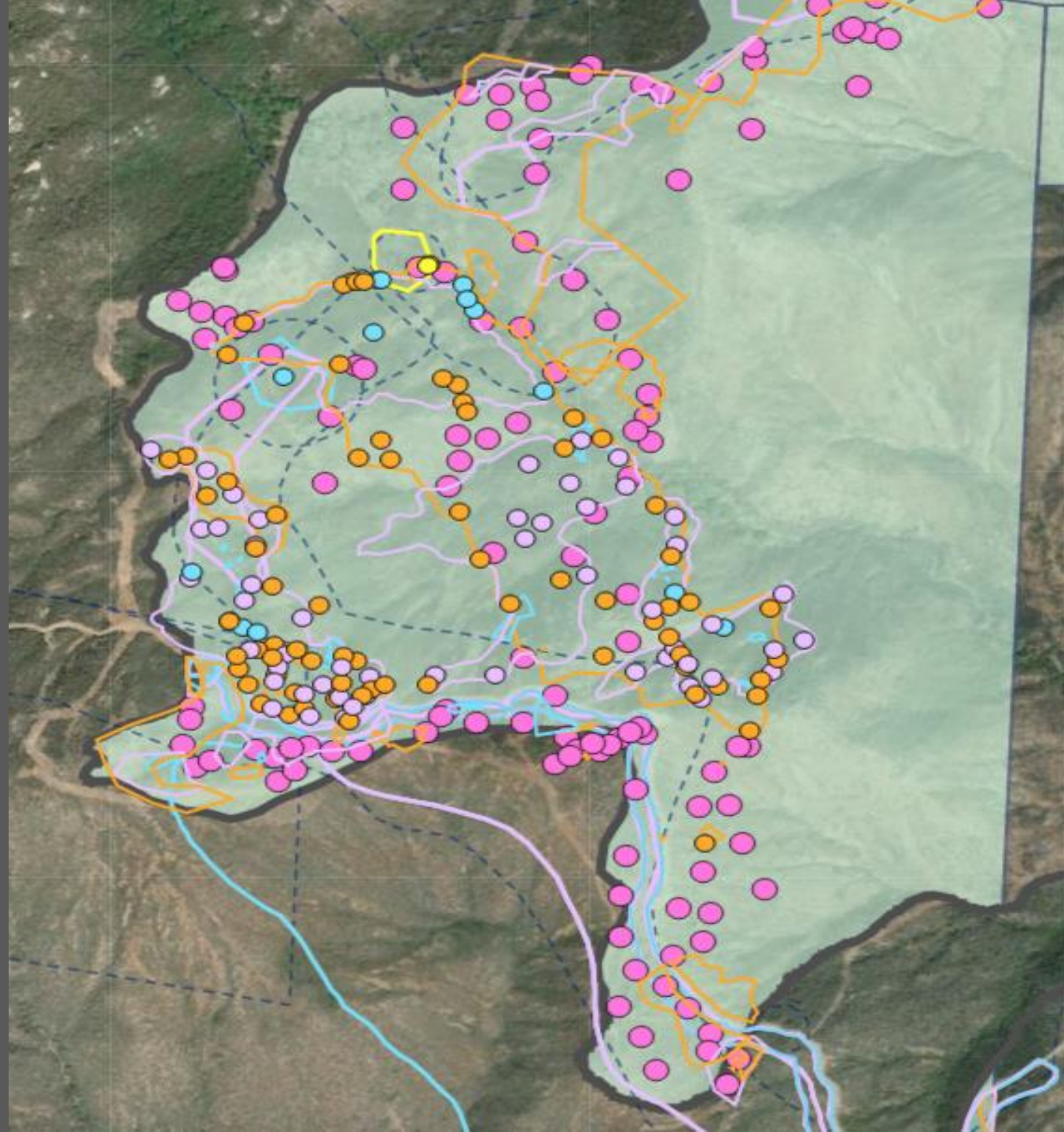
Valley Fire Post-Fire Surveys



Margie Mulligan







2022 Valley Fire Highlights

- Area surveyed many times, but surveys restricted to access roads, ridges and trails through chaparral.
- Post-fire surveys provided access to all habitat types, steep slopes, and deep valleys.
- Rare plants responded very well post-fire, despite low rainfall.
- Surveyors located *Asplenium* in two new County locations.
- *Ribes* responded well post-fire, but very difficult to identify when not flowering. Located several new populations near known occurrences.
- *Packera* extremely restricted in the County, but likely occurs elsewhere and in greater densities. Focus post-fire surveys on gabbro soils and historical locations.
- Surveyors located millions of *Allium* and *Packera* and thousands of *Monardella*.
- Additional survey areas with the Valley Fire remain.



2023 Inspect and Manage Species

Acanthomintha ilicifolia (San Diego thornmint)

Acmispon prostratus (Nuttall's acmispon)

Atriplex parishii (Parish's brittlescale)

Baccharis vanessae (Encinitas baccharis)

Brodiaea filifolia (Thread-leaved brodiaea)

Brodiaea orcuttii (Orcutt's brodiaea)

Chloropyron maritimum ssp. *maritimum* (Salt marsh bird's-beak)

Chorizanthe orcuttiana (Orcutt's spineflower)

Clinopodium chandleri (San Miguel savory)

Deinandra conjugens (Otay tarplant)

Dicranostegia orcuttiana (Orcutt's bird's-beak)

Dudleya blochmaniae (Blochman's dudleya)

Dudleya brevifolia (Short-leaved dudleya)

Erysimum ammophilum (Coast wallflower)

Monardella viminea (Willowy monardella)

Rosa minutifolia (Small-leaved rose)

Sphenopholis interrupta subsp. *californica* (Baja oatgrass)

Tetracoccus dioicus (Parry's tetracoccus)

2023 Discovery Species Surveys

Astragalus deanei (Deane's locoweed)

Atriplex parishii (Parish's brittlescale)

Fremontodendron mexicanum (Mexican flannelbush)

Monardella stoneana (Jennifer's monardella)

Rosa minutifolia (Small-leaved rose)