

Photographs of Southcoast-Ecoregion Stream-Associated Amphibians, Reptiles, and Freshwater Fishes.

AMPHIBIAN NATIVES:



California treefrog (*Pseudacris cadaverina*)

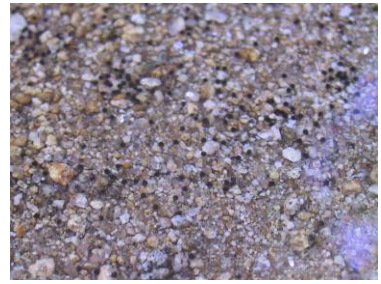


Pacific treefrog (*Pseudacris regilla*)

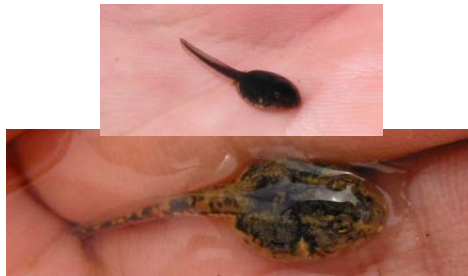


Western toad (*Bufo boreas*)

AMPHIBIAN NATIVES (continued):



Red spotted toad (*Bufo punctatus*)



Arroyo toad (*Bufo californicus*)



Spadefoot (*Spea hammondi*)



California red-legged frog (*Rana draytonii*)

AMPHIBIAN NATIVES (continued):



Mountain yellow-legged frog (*Rana muscosa*)



Coast range newt (*Taricha torosa*)

AMPHIBIAN NON-NATIVES:



Bullfrog (*Rana catesbeiana*)



African clawed frog (*Xenopus laevis*)

ADDITIONAL AMPHIBIAN REFERENCE PHOTOS:

Differences between western toad metamorphs and arroyo toad metamorphs



Venter: *B. boreas* (left) *B. californicus* (right)



Dorsum: *B. boreas* (bottom) and *B. californicus* (top)

GARTER SNAKES



Two-striped garter snake
(*Thamnophis hammondi*)



Red-sided garter snake
(*Thamnophis sirtalis*)

TURTLE NATIVES:



Western pond turtle (*Emys marmorata*)



TURTLE NON-NATIVES:



Red-ear slider
(*Trachemys scripta elegans*)



Yellow-bellied slider
(*Trachemys scripta scripta*)



Undetermined slider subspecies
(*Trachemys scripta* spp.)



Western painted turtle
(*Chrysemys picta bellii*)



Eastern painted turtle
(*Chrysemys picta picta*)



Southern painted turtle
(*Chrysemys picta dorsalis*)



False map turtle
(*Graptemys pseudogeographica*)



Mississippi map turtle
(*Graptemys pseudogeographica kohnii*)



Spiny soft shell turtle
(*Apalone spinifera*)



Common snapping turtle
(*Chelydra serpentina*)



Mexican mud turtle
(*Kinosternon integrum*)

FISH NATIVES:



Unarmored threespine stickleback (*Gasterosteus aculeatus williamsoni*): Male in breeding color (left), and female or non breeding color (two right photos).



Arroyo chub
(*Gila orcutti*)



Santa Ana sucker
(*Catostomus santaanae*)



Stickleback (top), chub
(middle), and sucker (bottom)



Speckled dace
(*Rhinichthys osculus*)

FISH NON-NATIVES:



Fathead minnow (*Pimephales promelas*)



Mosquitofish (*Gambusia affinis*) female (top) and male (bottom)

FISH NON-NATIVES (continued):



Common carp (ornamental)
(*Cyprinus carpio*)



Common carp
(*Cyprinus carpio*)



Goldfish
(*Carassius auratus*)



Green sunfish
(*Lepomis cyanellus*)



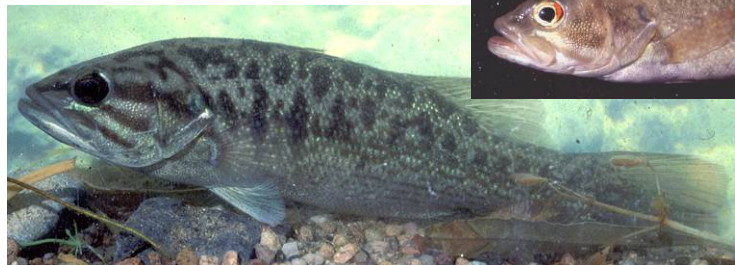
Bluegill
(*Lepomis macrochirus*)



Black crappie
(*Pomoxis nigromaculatus*)



Largemouth bass
(*Micropterus salmoides*)



Redeye bass
(*Micropterus coosae*)



Brown trout (*Salmo trutta*)



Rainbow trout (*Oncorhynchus mykiss*)

FISH NON-NATIVES (continued):



Brown bullhead catfish (fry)
(Ictalurus nebulosus)



Red swamp crayfish
(Procambarus clarkii)