

# Famosa Slough Treatment Pond Restoration - Early 2025

## S1125487

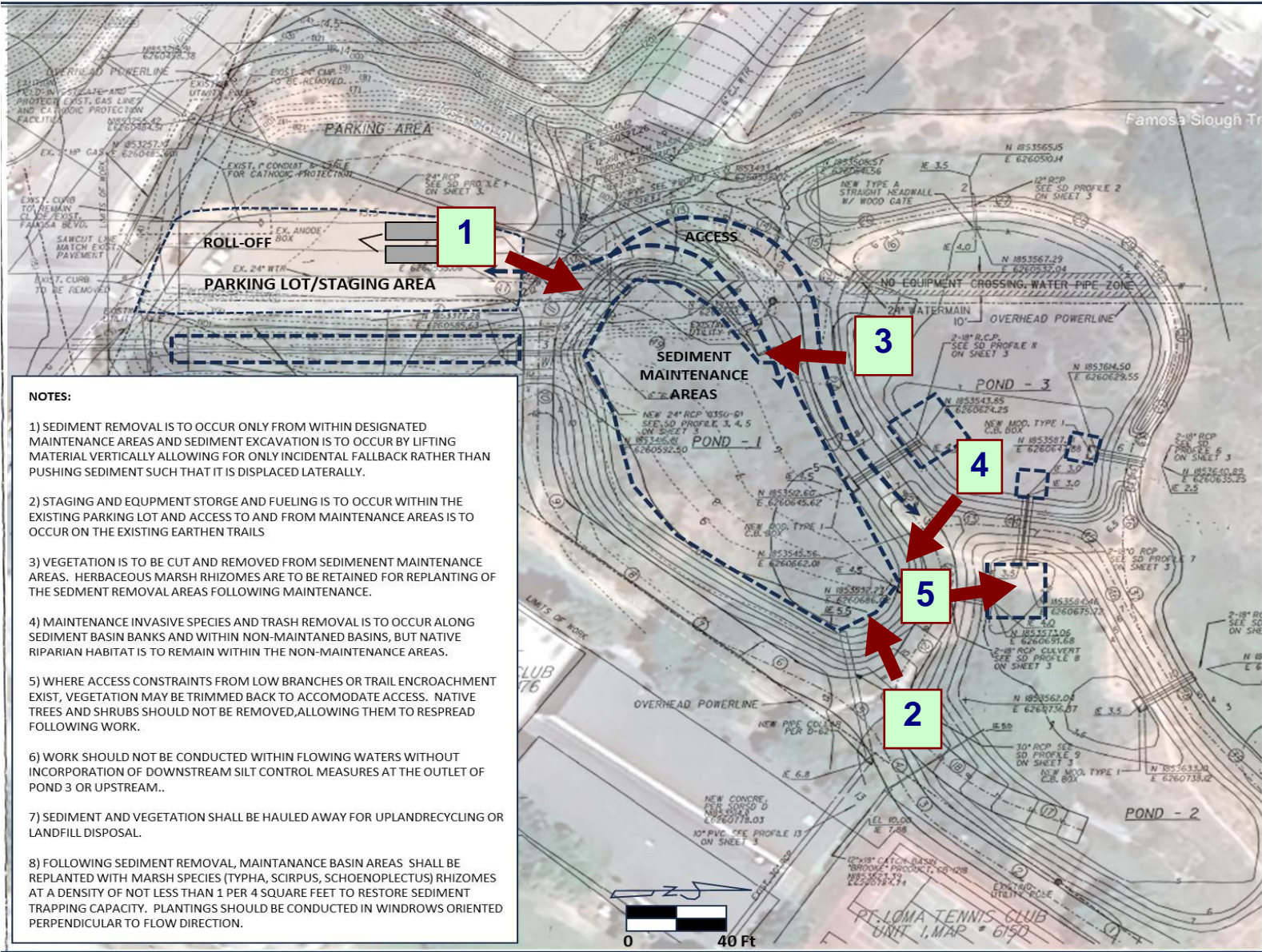


Photo Key # and direction





**Photo station #1: before overgrown**



**before #2**



before #4



before



**before - weed trees & grasses overgrew the ponds**





**before  
culverts are filled in  
and not  
communicating  
flow**



**work started.  
we began by  
clearing out the  
vegetation to  
access the pond**



**work started.  
we began by  
clearing out the  
vegetation to  
access the pond**



**work started.  
the excavator came in  
and dug out palm  
trees.  
Volunteers disposed  
~130 CY of vegetaion**





**removal of  
sediments  
begins. we  
removed approx.  
120 CY sediment**







**digging & grading  
for pond design.  
all culverts  
connecting the  
ponds are cleared**





storing bullrush rhizomes



mining sand for trails



**#1 establishing a local positioning system**



**#1 establishing grades**



**#2 volunteers planting bullrush and fine grading with shovels**



**#2 volunteers planting bullrush and fine grading with shovels**



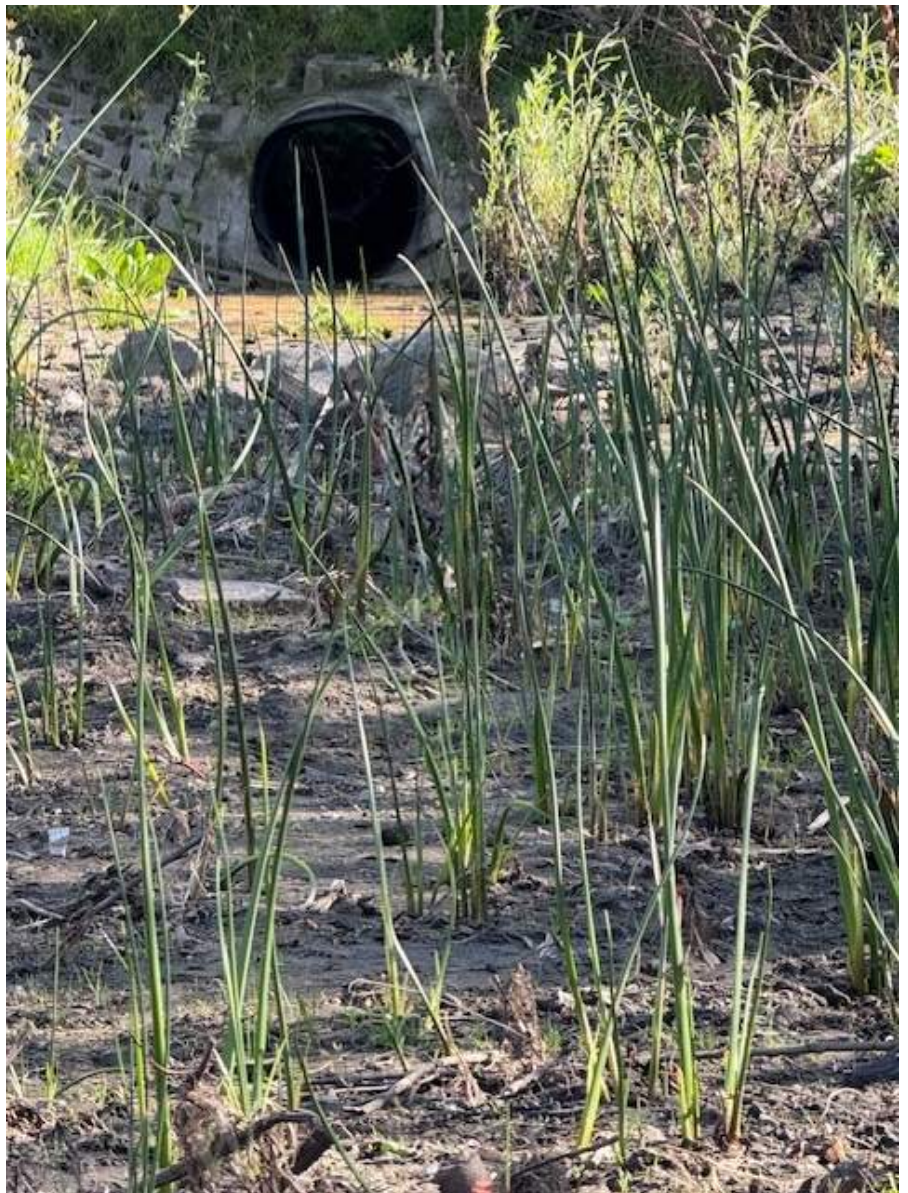
**photo station #2:  
before and after from a  
similar station point**







**Photo station #3:  
bullrush begins  
filling the ponds**





**Many community members volunteered!**

**This project reinvigorated our love of the slough and connections with friends.**

