

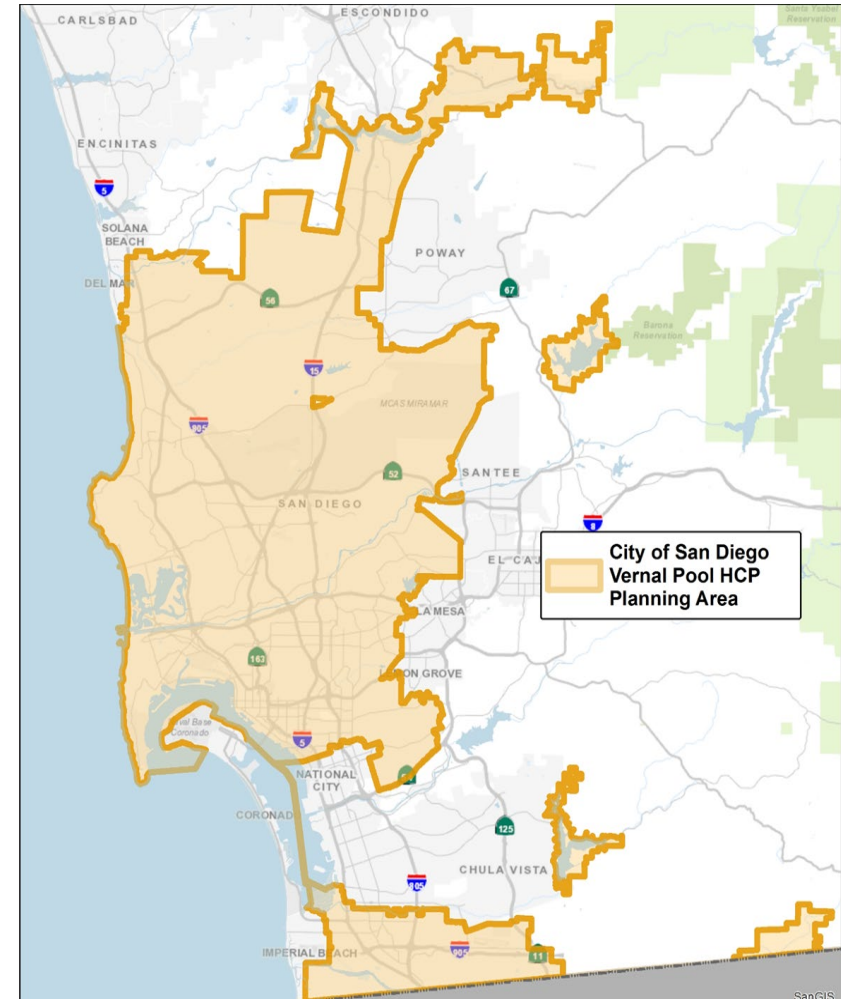
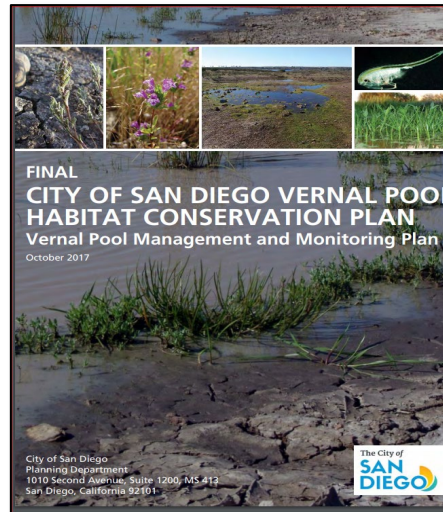
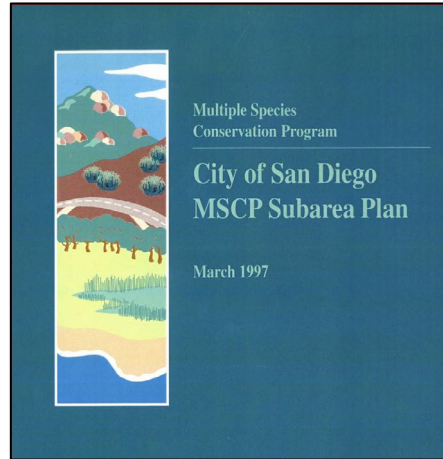
Storymap Reports and Digital Data Summary

SDMMP End of Year Meeting
December 8th, 2021



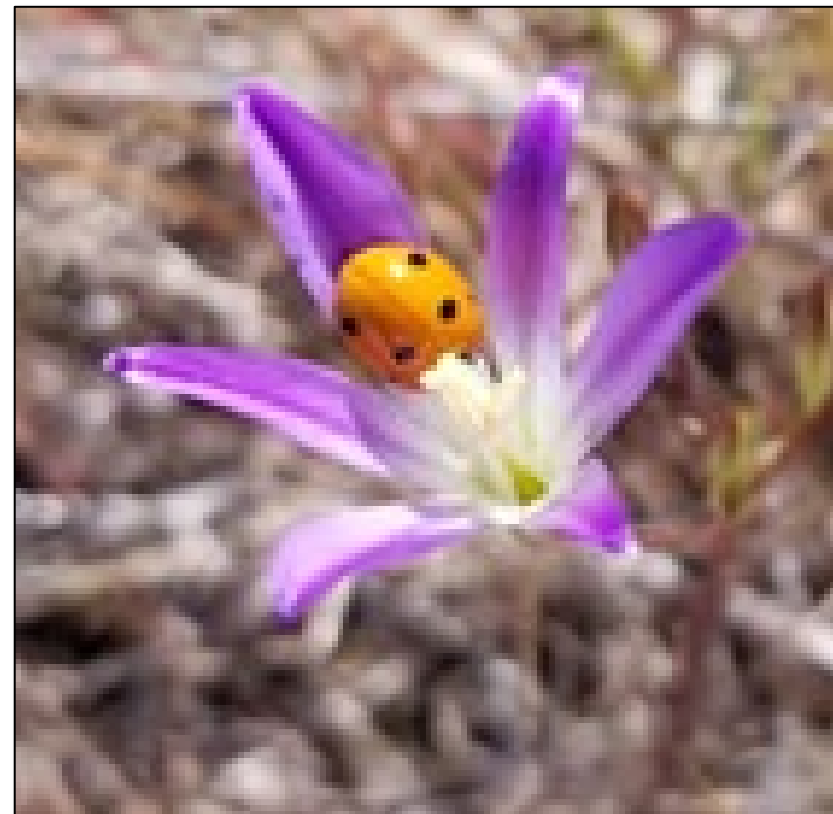
HCPs = ENTIRE CITY

- **1997-2047**
 - MSCP - 50 years
 - VPHCP - 29 years
- **206K ac**
 - Municipal
 - Cornerstone
- **Covers 85 Species**
 - 46 Plants
 - 39 Animals

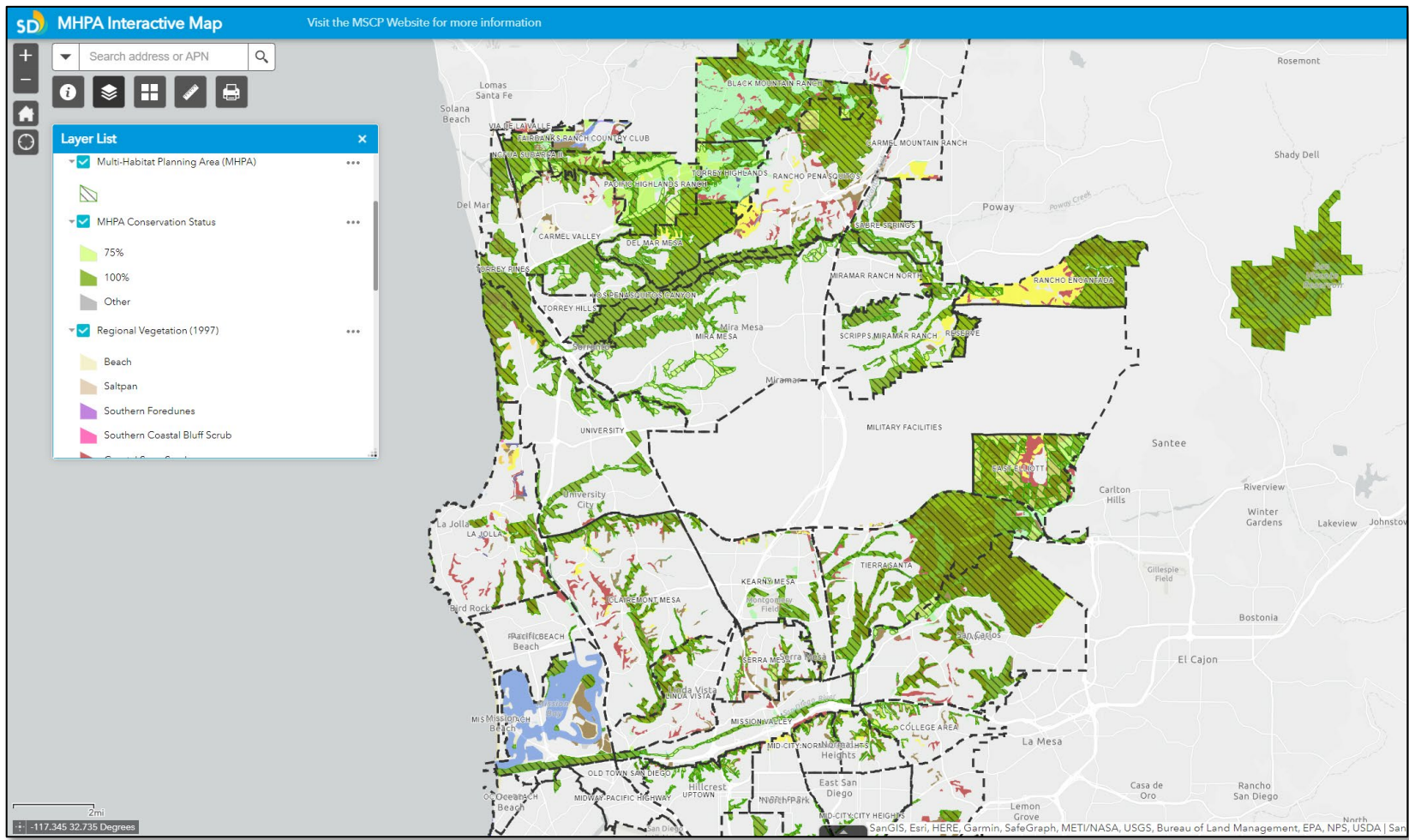


ABOUT THE MSCP

- Multi-Habitat Planning Area
- MHPA is approximately 57,000 acres
- MSCP Final Preserve = 90% of MHPA or 52,727 acres by the year 2047



MHPA Interactive Map



VPHCP Interactive Map

SD Vernal Pool Habitat Conservation Plan Interactive Map City of San Diego MSCP Visit the VPHCP Website

Search by Address or APN

Legend

- MHPA - Multi-Habitat Planning Area
- Vernal Pool HCP Layers (CLICK TO EXPAND)
 - ERAR-San Diego button celery
 - 1 or more
 - NAFO-Spreading navarretia
 - 1 or more
 - ORCA-California Orcutt grass
 - 1 or more
 - POAB-San Diego Mesa Mint
 - 1 or more
 - PONU-Otay Mesa Mint
 - 1 or more
 - SDFS-San Diego fairy shrimp

0.1mi 117.017 32.555 Degrees

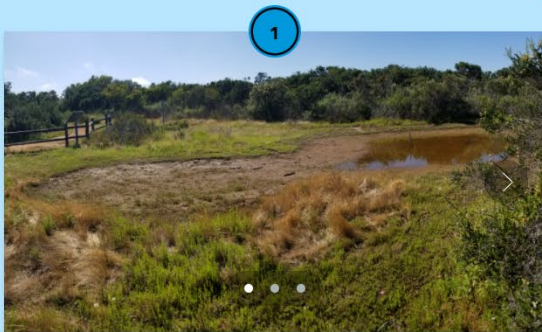
Earthstar Geographics | Esri, HERE, Garmin

POWERED BY esri



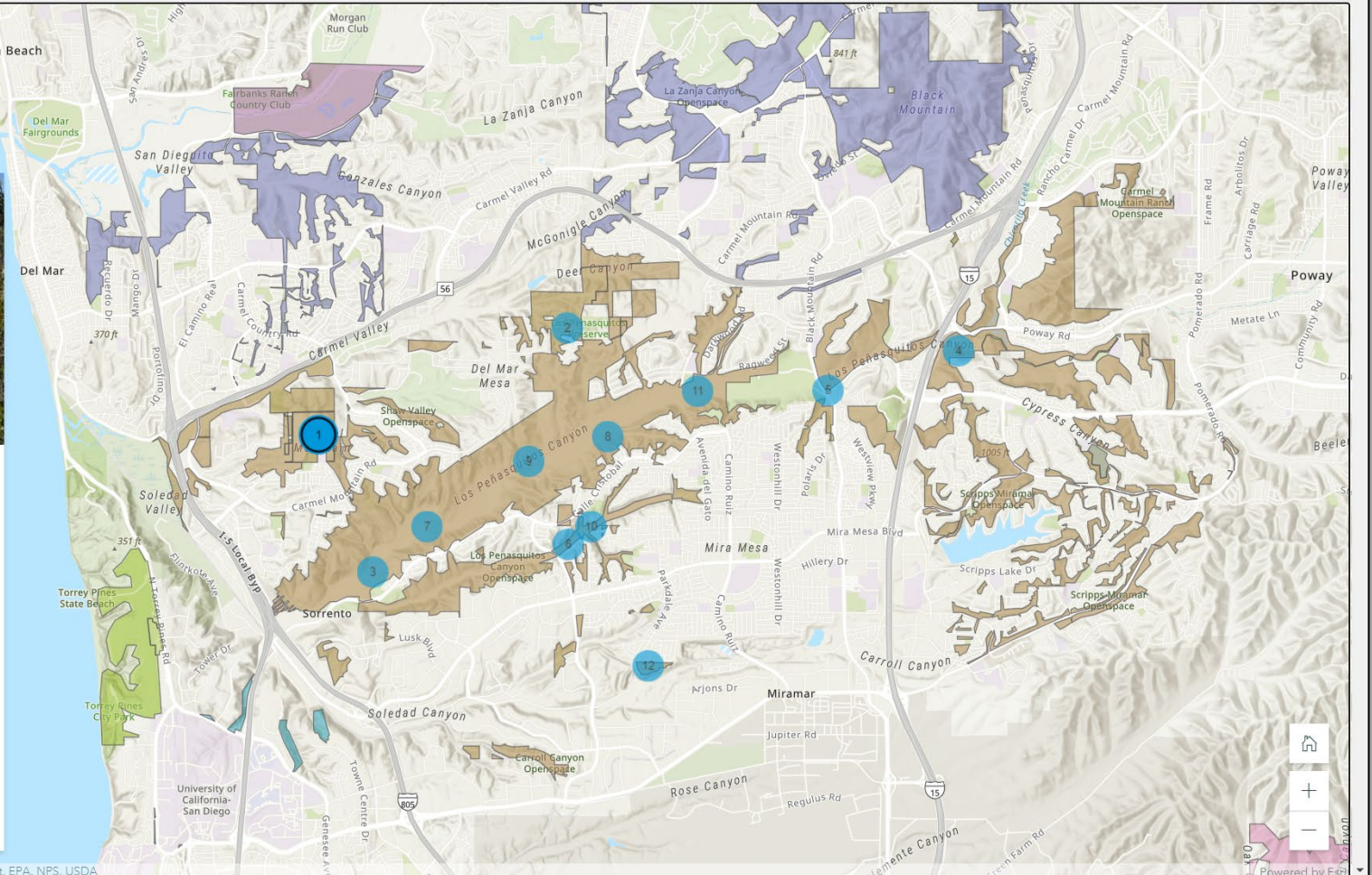
MSCP MANAGEMENT REPORT





Patrols & Natural Resource Protection

Rangers preformed regular patrols to enforce park rules and keep a look out for maintenance and management issues. Patrols focused on safety of park visitors and protection of natural resources with special attention directed towards sensitive species and habitats like Short-leaved dudleya and vernal pools.

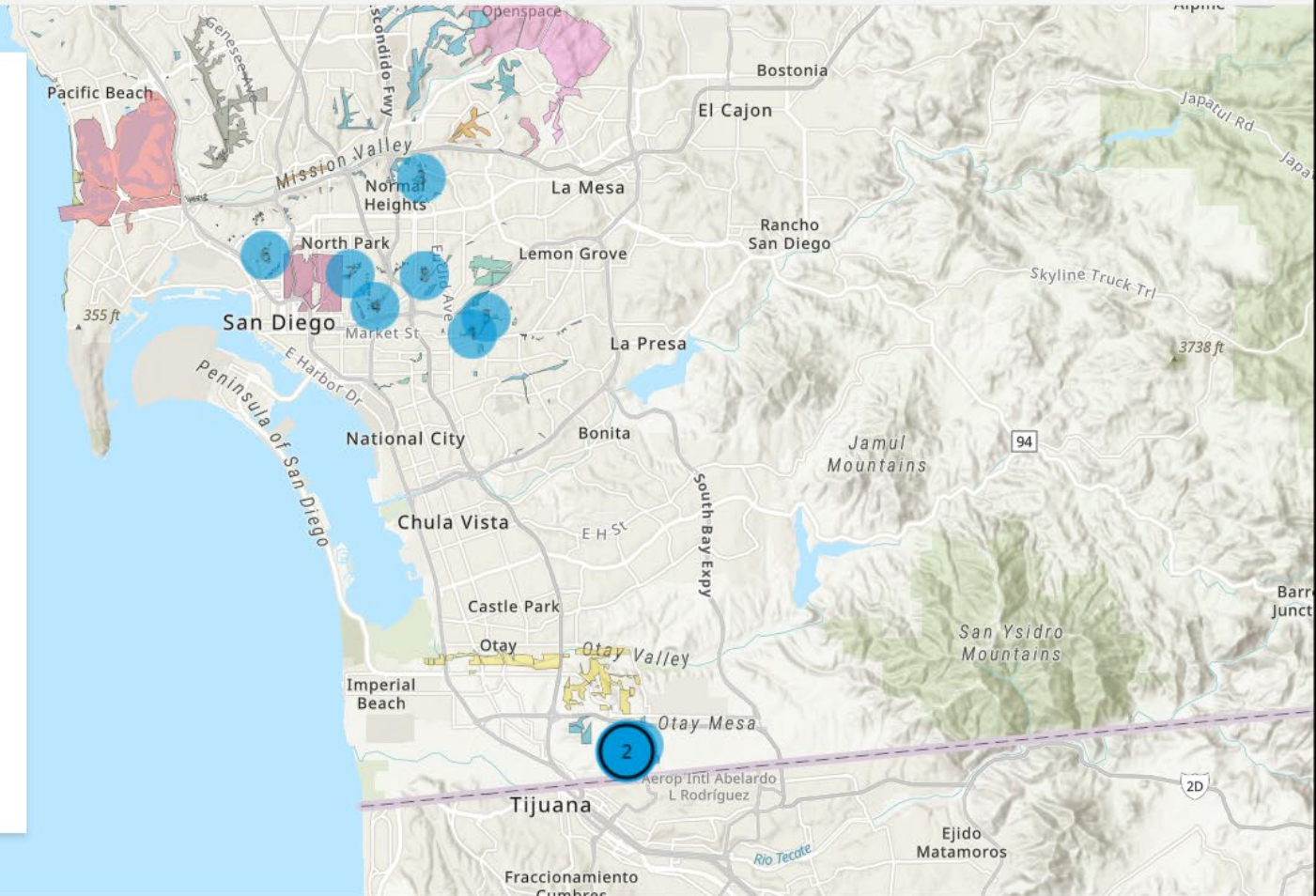


2

Vernal Pool Maintenance

City biologist worked with City pesticide applicators and contracted crews to perform weed maintenance around vernal pools. Weed maintenance was completed at the following complexes: Anderprises, Goat Mesa, Kelton, Pasatiempo, Serra Mesa Library, South Otay 1 acre, West Otay B, West Otay C, and Wruck Canyon.

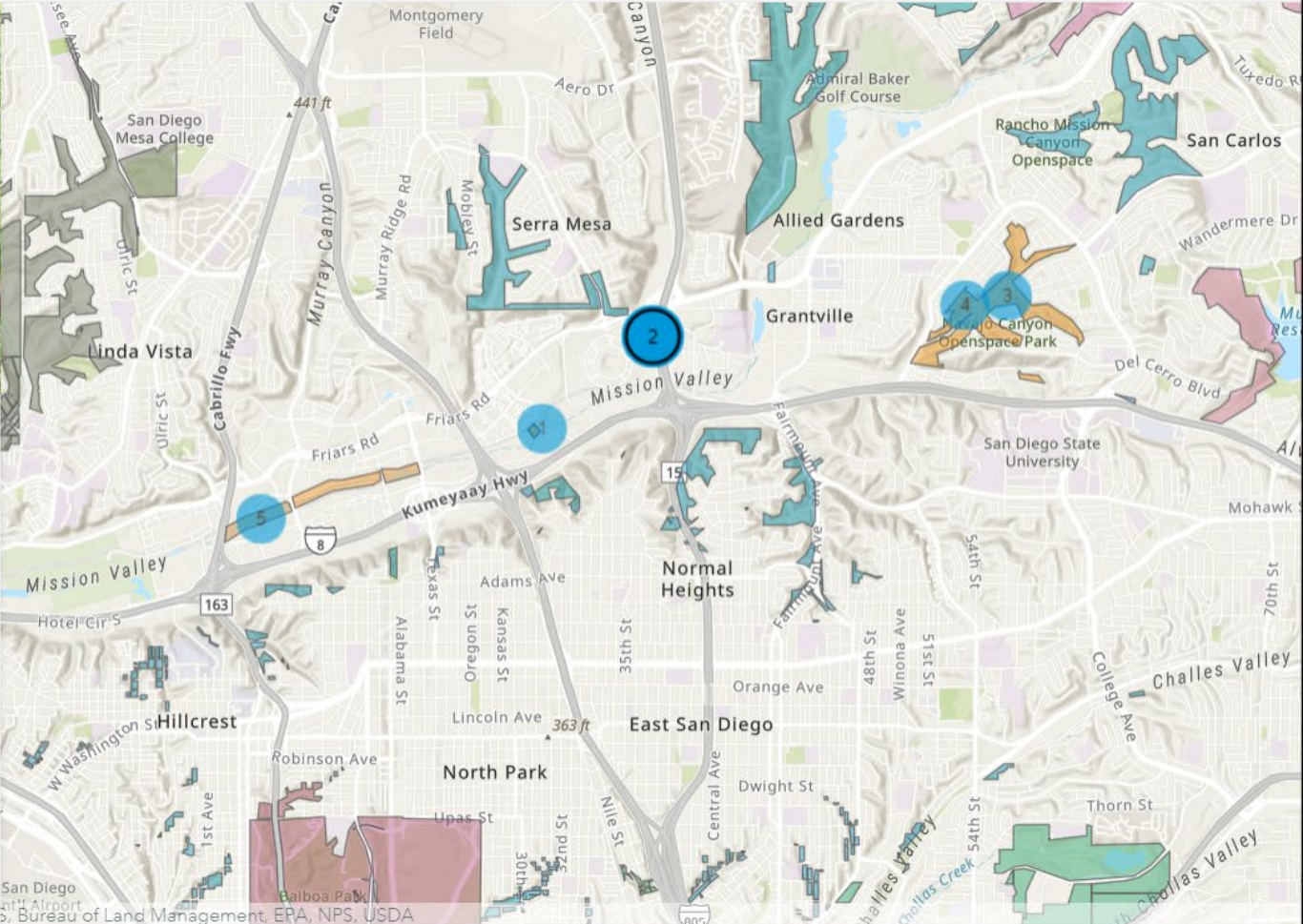
02 / 09





Encampment Abatement

Senior Ranger coordinated with the San Diego Police Department and Environmental Services Department to abate a total of 88 illegal encampments in the San Diego River and its tributaries.



Chollas Lake Ranger District

As a reservoir built in 1901, Chollas Lake helped serve early San Diego's water supply. In 1966 it was turned over to the Parks & Recreation Department and was designated a youth fishing lake (for children ages 15 and under only) in 1971. In September of 2020, management of the 16-acre lake was transferred from the Parks and Recreation Department's Developed Regional Parks division to the Open Space division. The park features a mix of active and passive recreation opportunities including an 8/10-of-a-mile dirt path around the lake for walking, jogging, and bicycling; picnic tables with barbecue grills; children's play equipment; a small basketball court; hiking trails; and a multi-purpose ball field in North Chollas canyon.



Fencing & Signage

Ranger's installed a total of 95 linear feet of fencing in Chollas Lake area to help delineate trails and protect native habitat.



Management Actions: At-A-Glance

- PUD – Cornerstone Lands, Reservoirs and Canyon Sewer Cleaning Program
- P&R – MHPA Lands, MTRP, TCNP, Environmental Education (Limited in 2020 due to COVID)



Signs Installed	Fence Install/Repair (linear ft.)	Trail Maintenance and Repair (linear ft.)	Trash/ Litter removed (lbs)	Habitat Restoration Completed (acres)	Weed Control/ Habitat Enhancement (acres)	Native Seed Installed (lbs)	Native Plants Installed	Encampments Abated	Encampment Disturbance Area (sq. ft.)
502	3,811	126,216	199,670	10.25	281	400	10,556	313	90,662

Table 1: Quantitative Summary of Management Actions Completed in 2020



Native Plant Propagation

Rangers collected local seed and propagated native plants for use in restoration projects in Los Penasquitos Canyon. The Los Penasquitos/Black Mountain native plant nursery was established by volunteers in 2019. COVID-19 policies prevented volunteers from continuing to work on the nursery through much of 2020 but park rangers made sure the plants were cared for.



Invasive Species Control

Invasive species removed included: stinkwort, tocolote thistle, milk thistle and Mexican fan palms.



Willowy Monardella

Friends of Los Penasquitos Canyon performed weed control in the vicinity of endangered Willowy Monardella plants to reduce competition and give the plants some space to grow. They also worked with City biologists and the Transportation and Stormwater department to help select a place to plant new individuals in the coming year.



Vernal Pool Maintenance

City biologist worked with City pesticide applicators and contracted crews to perform monitoring and weed maintenance around vernal pools within the Los Penasquitos Ranger Management District. Weed maintenance was completed at the following complexes: Carmel Mountain, Carroll Canyon, Del Mar Mesa and Lopez Ridge vernal pool complexes.



Habitat Restoration

The Friends of Los Penasquitos Canyon worked with Rangers to maintain and expand coastal sage scrub habitat restoration sites in Lusardi Open Space. Restoration activities included seasonal mechanical removal of nonnative weed species (artichoke thistle, mustard, and nonnative grasses), as needed targeted herbicide treatments to maintain low weed cover, installation of native container plants, and as-needed supplemental irrigation.



Trail Maintenance and Access Control

Ranger's performed maintenance on over 7,000 linear feet of trails in Black Mountain Open Space. Maintenance activities included repairing erosion damage, trimming back brush growing along trails, closing illegal trails and installing 120 feet of new fencing to better delineate official trails. They also installed a new informational kiosk and 19 permanent signs to help with wayfinding and communication of park rules.



MSCP Rare Plant Monitoring Report

City of San Diego

Sara Allen
August 12, 2021

[INTRODUCTION](#)

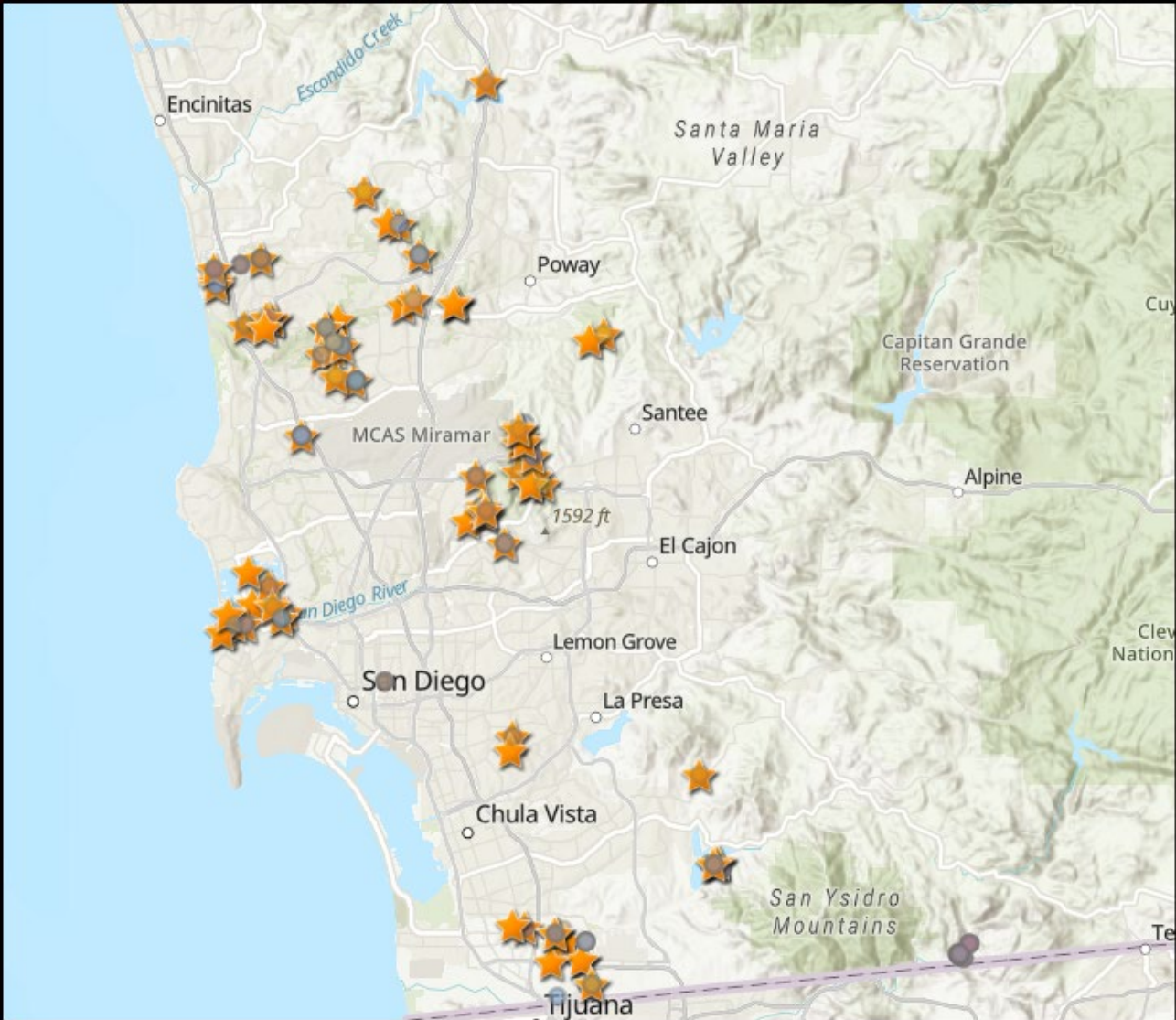
[MAP OF OCCURRENCES](#)

[DATA DASHBOARD](#)



MAP OF OCCURRENCES

The map below displays known rare plant occurrences and established sample points. Sample points monitored in 2020 are shown as orange stars on the map.



DATA DASHBOARD

In 2021, the City of San Diego launched the interactive MSCP Rare Plant Data Dashboard. This dashboard currently displays summarized data for rare plant occurrences on City property from 2014 through 2020 and allows viewers to visualize data trends over time. This dashboard will be updated annually as new monitoring data is available. To explore the data dashboard, click on the dashboard below and use the side panel to select the rare plant occurrence, sample point and year that you would like to view data for. Individual charts can be expanded for a full screen view by clicking in the upper right corner of each chart.

MSCP Rare Plant Data Dashboard

Summarized Monitoring Data for Rare Plant Occurrences and Sample Plots

Select a Species

- Coast wallflower
- Encinitas baccharis
- Jennifer's monardella
- Nuttall's acmispon
- Orcutt's birds-beak**
- Orcutt's brodiaea

Select an Occurrence

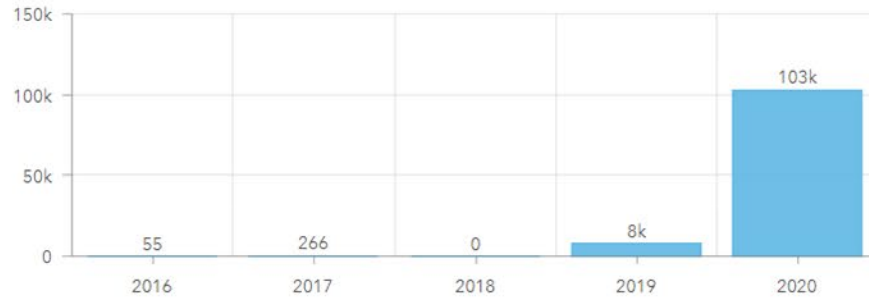
- Dennery Canyon (COOR7_3DREA007)**
- Otay Valley Regional Park (COOR7_3ORVA001)
- Otay Valley Regional Park (COOR7_3OVRP011)

Select Sample Plot

- COOR7_3DREA007_1**

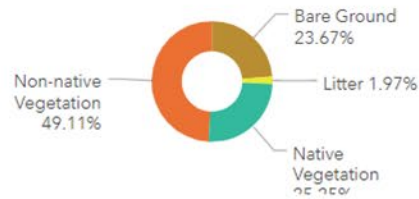
Occurrence Level Data

Number of Plants in Mapped Extent Over Time



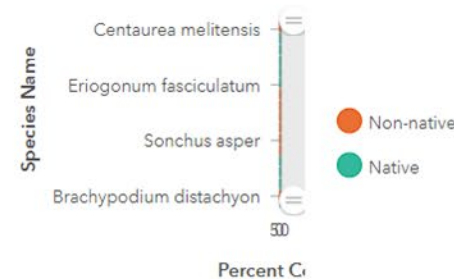
Sample Plot Data

Cover Types in Sample Plot



Percentages displayed indicate relative cover. Hover over chart segments to view absolute cover estimates in bold.

Associated Species in Sample Plot



Sample Plot Photo

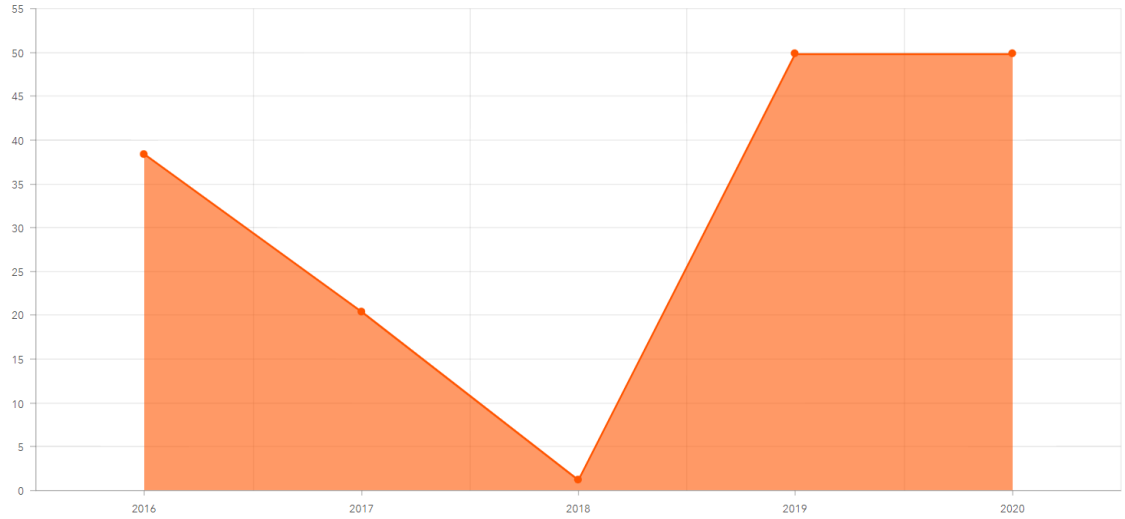


COOR7_3DREA007_1_Photo1_06122020_resize.jpg

Some photos are not currently available for online viewing.

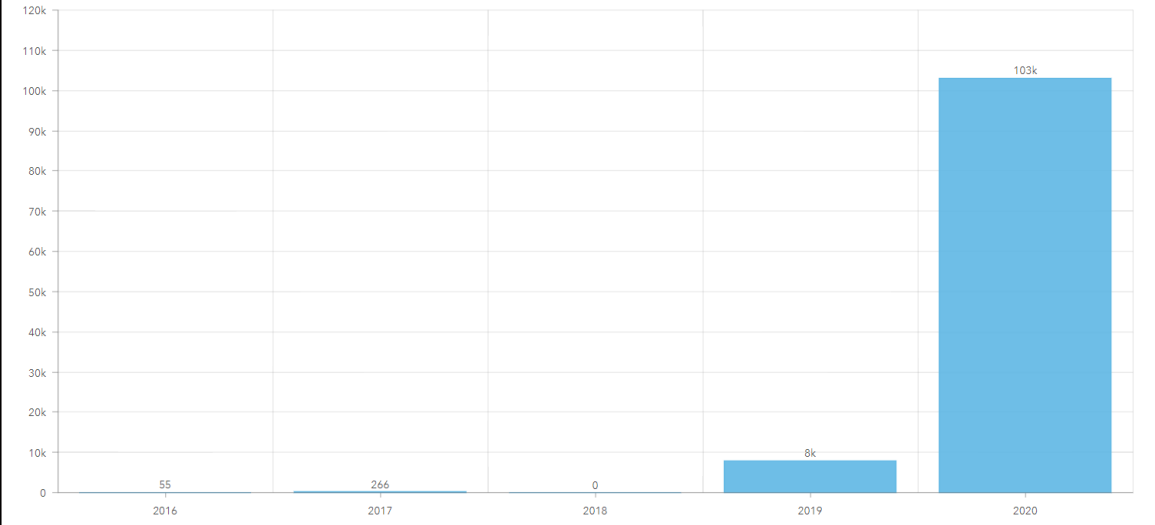


Average Non-Native Cover in Sample Plots



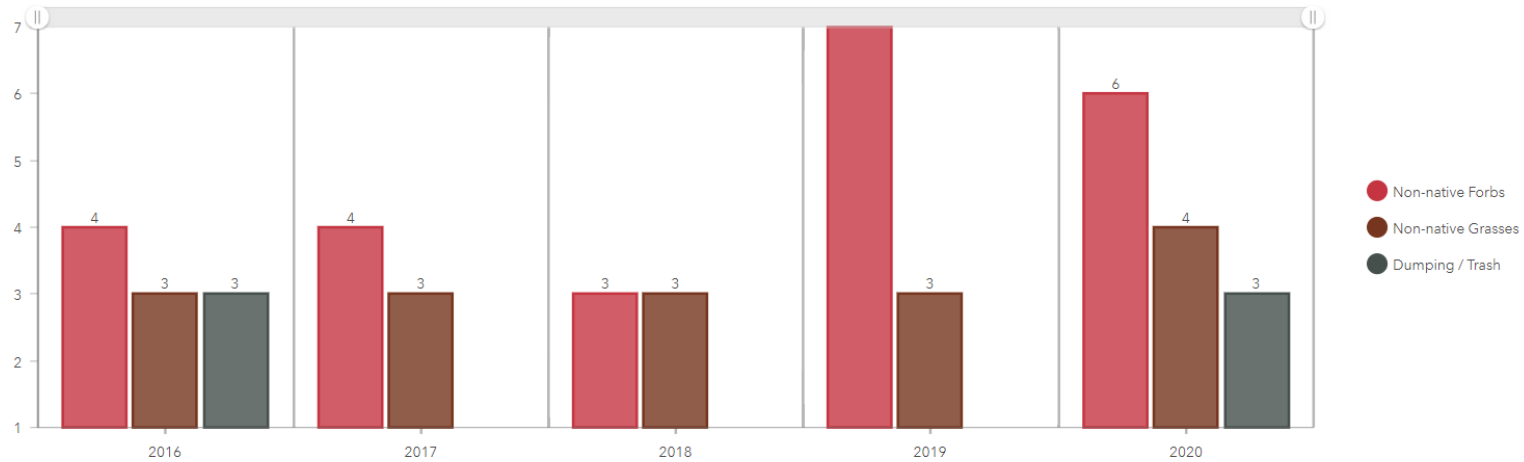
Number of Plants in Mapped Extent | **Cover of Non-native Species** | Observed Threats in Maximum Extent

Number of Plants in Mapped Extent Over Time



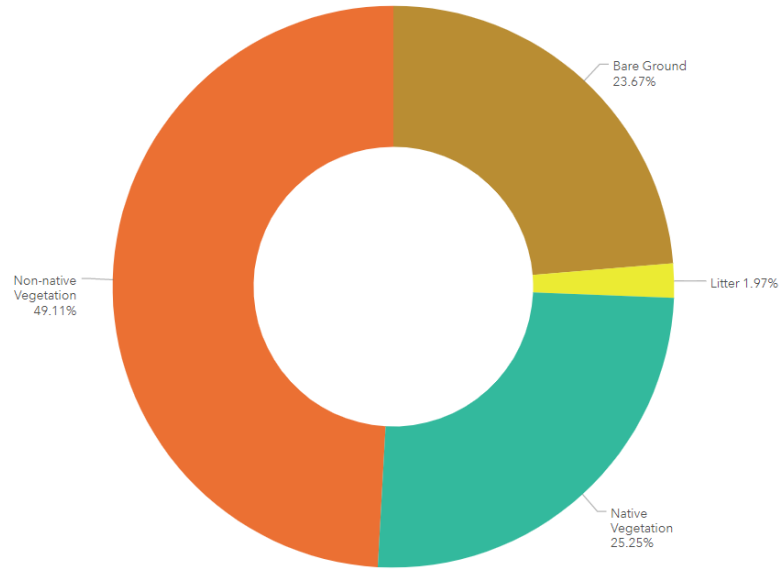
Number of Plants in Mapped Extent | Cover of Non-native Species | Observed Threats in Maximum Extent

Observed Threats in Maximum Extent Over Time



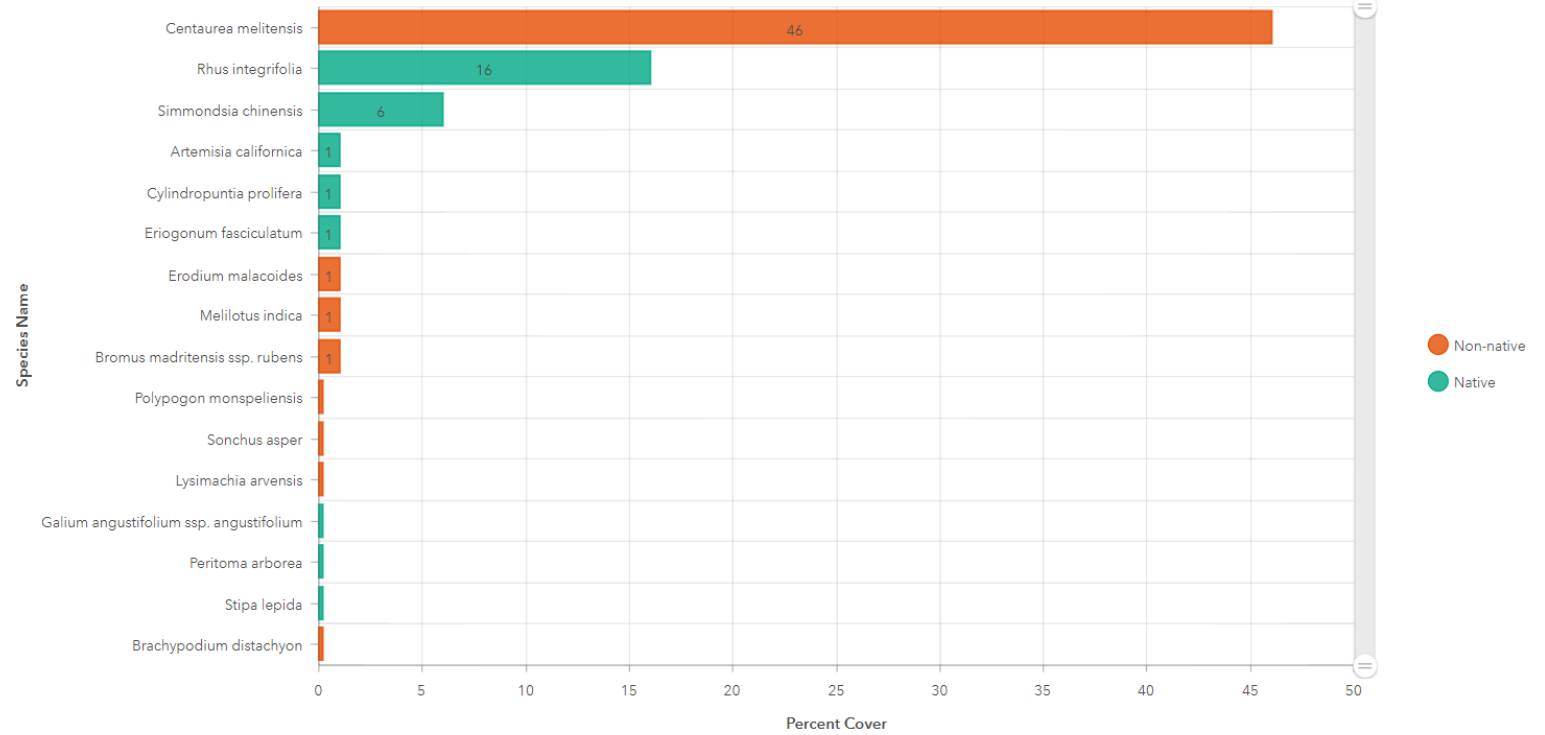


Cover Types in Sample Plot



Percentages displayed indicate relative cover. Hover over chart segments to view absolute cover estimates in bold.

Associated Species in Sample Plot



Thank You
SDMMP, USGS, SANDAG,
Natural Resource Staff, Rangers,
And everyone of Conservation Partners



- 2020 MSCP Annual Report: <https://www.sandiego.gov/planning/programs/mscp/docsmaps/annualreport>
- 2020 MSCP Management Actions Report: <https://storymaps.arcgis.com/stories/788338991734404bac98469bc81c58fc>
- 2020 MSCP Rare Plant Monitoring Report: <https://arcg.is/0rOL5C>
- MHPA Interactive Mapping Tool: <https://sandiego.maps.arcgis.com/apps/webappviewer/index.html?id=11930ddbfbcb4335970ebe254c4e0c12>
- VPHCP Interactive Mapping Tool: <https://sandiego.maps.arcgis.com/apps/webappviewer/index.html?id=7cfd12d64af8424b986af45712933b88>