

Management Considerations for Urban Preserves



Markus Spiegelberg
San Diego Regional Preserve Manager
Center for Natural Lands Management

CNLM is a 501(c)3 nonprofit corporation created to protect and preserve biological resources through the long-term stewardship of mitigation and conservation lands.

Why Am I Here?


(free lunch)

- ◆ General discussion and dialogue regarding management considerations for preserve areas
- ◆ Improve management plans

Background


- ◆ Project by project conservation replaced by HCP's
- ◆ HCP's were science based and considered many elements, including long-term stewardship
- ◆ But individual preserves within an HCP are still set aside project by project-many different management and funding scenarios:
 - Non-profit, hold endowment, provide stewardship
 - Government provided stewardship
 - HOA pays fee to private for-profit, etc
- ◆ Competitive bidding process usually based on terms of a HMP
 - smaller preserves usually don't have a HMP*
 - form some kind of minimum task list
- ◆ Terms of HMP are critical-race to the bottom
- ◆ Guidance for HMPs should come from MHCP Vol. III*, OSMP's, other general plans and maybe now MSP
- ◆ Land stewards should develop the costs

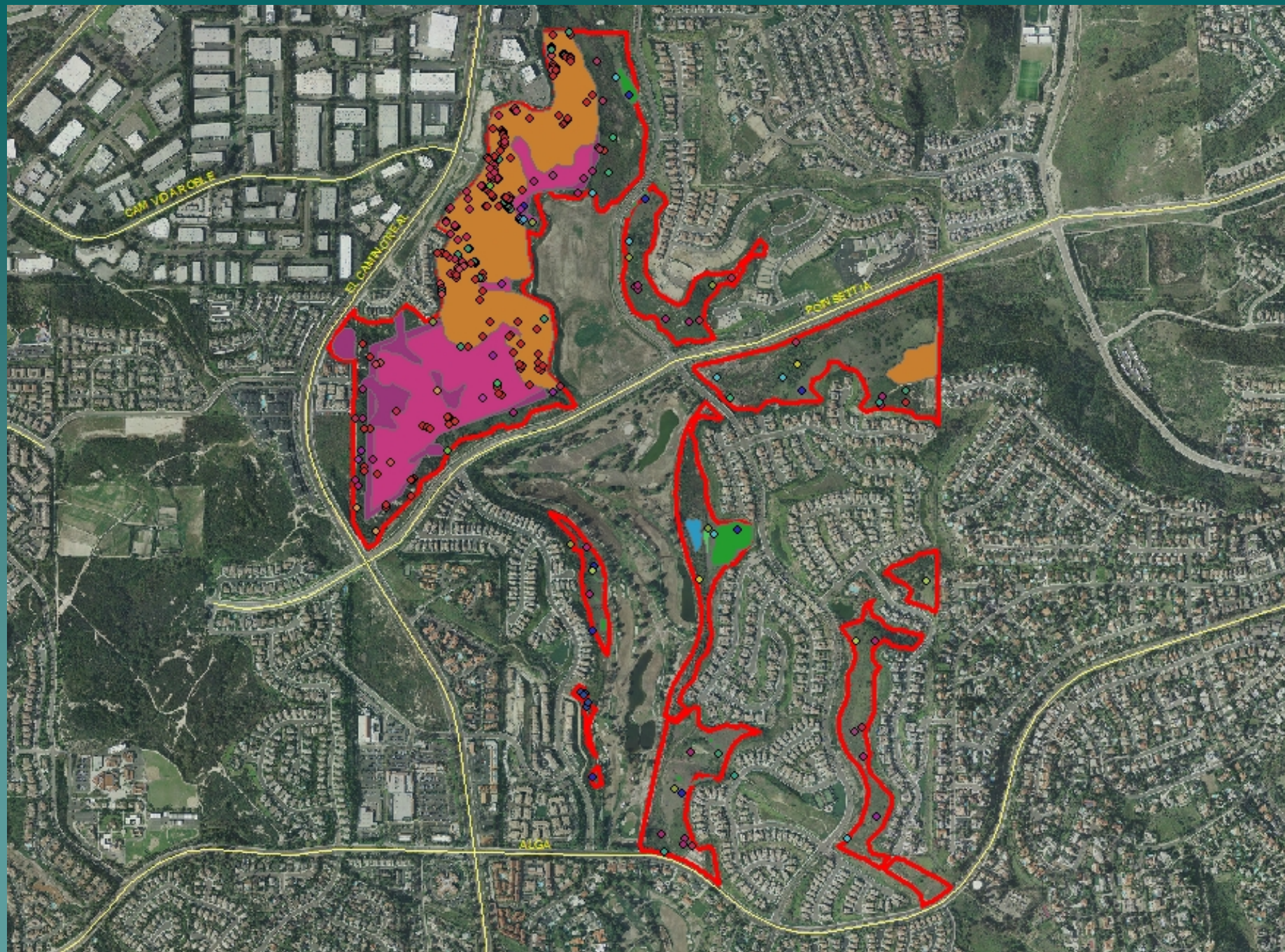
Basic Stewardship Tasks

- ◆ General Maintenance
 - fencing, signs, trash pick up, etc
 - ◆ Biological Surveys/Monitoring
 - ◆ Habitat Maintenance
 - invasive species control, erosion control, habitat enhancement, etc
 - ◆ Public Outreach
 - trails, tours, volunteer events, etc
 - ◆ Enforcement
 - ◆ Reporting
- 
- A stylized, dark teal silhouette of a mountain range is positioned in the bottom right corner of the slide, partially overlapping the background.



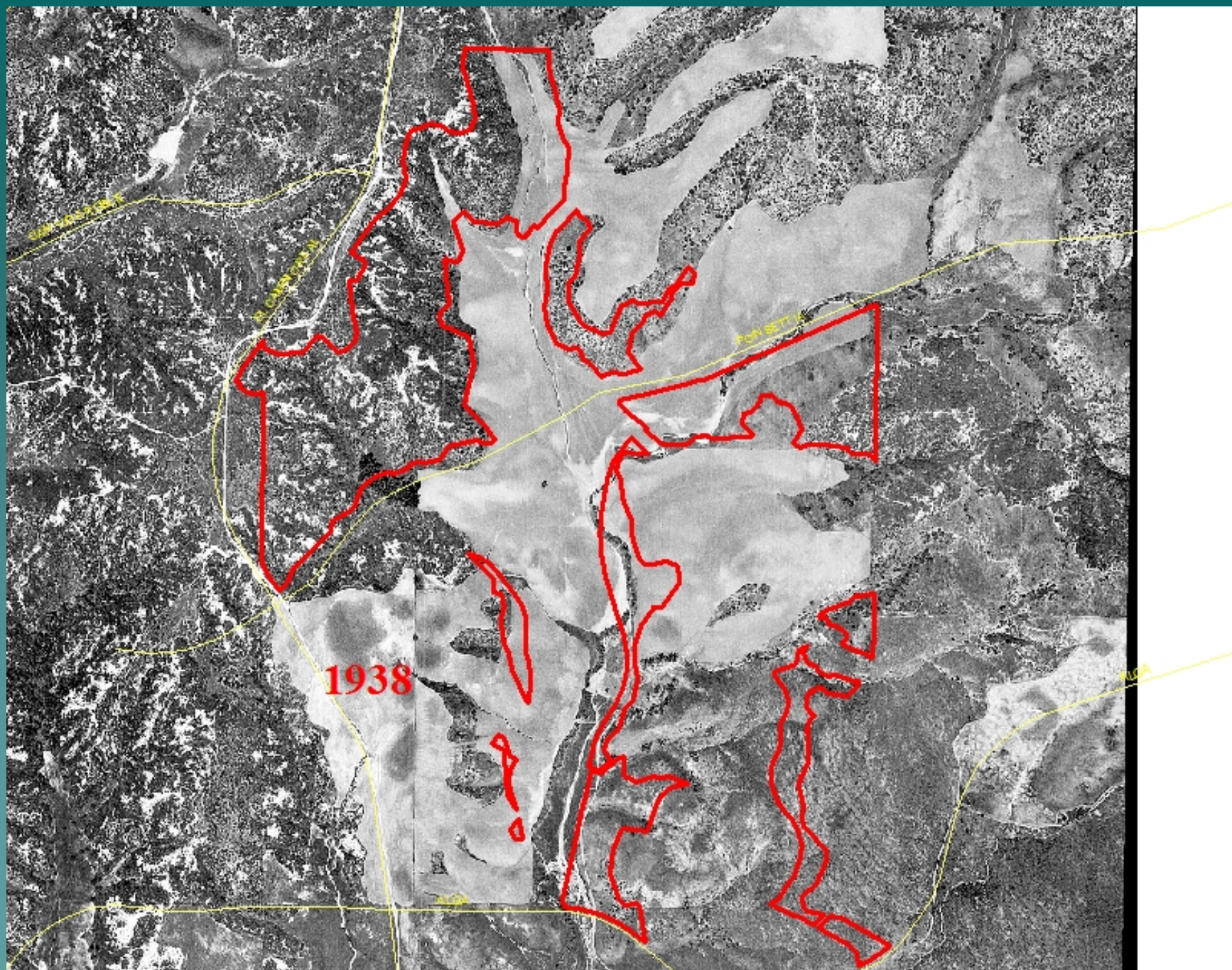
Rancho La Costa Basics

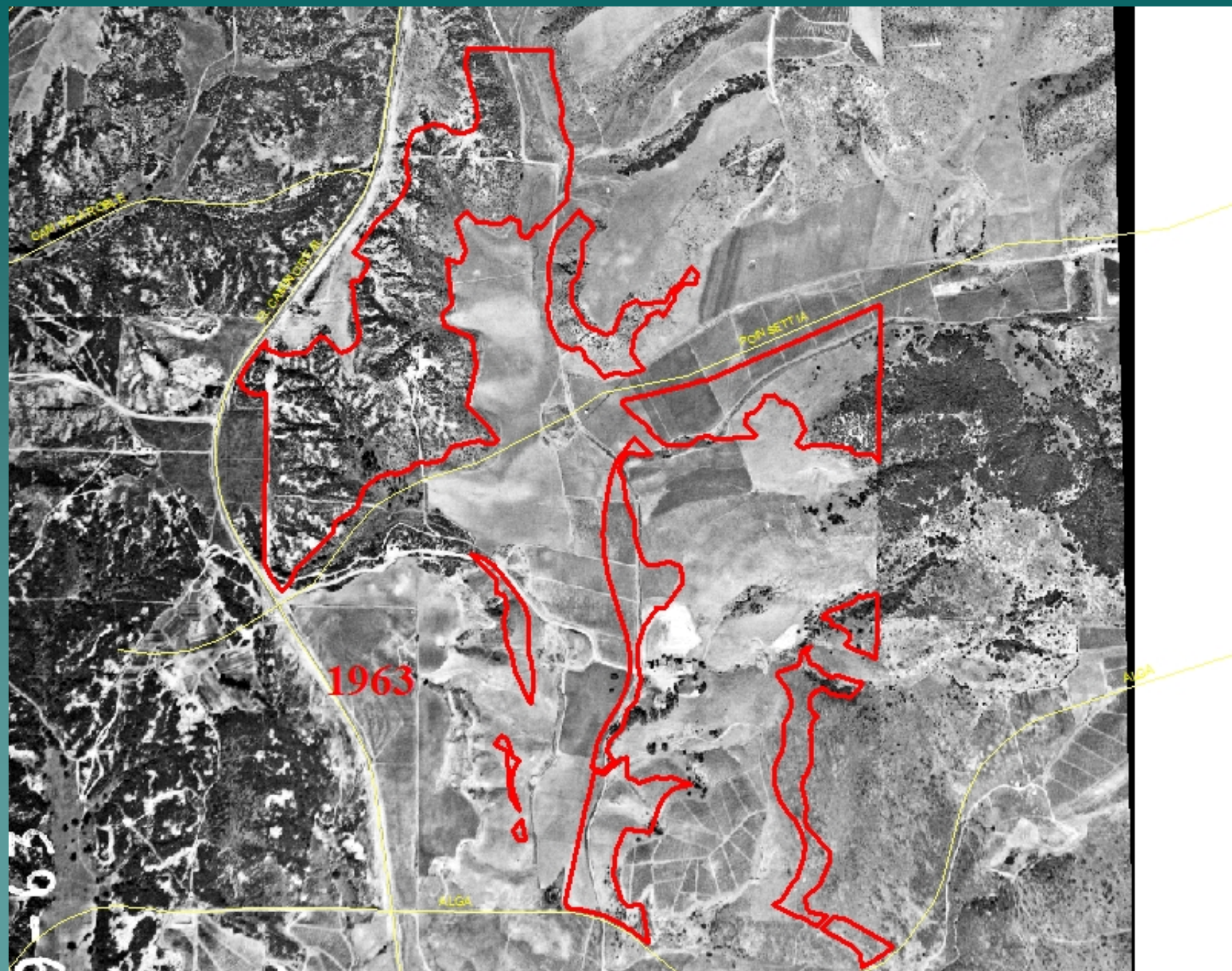
- ◆ ~1,700 acres set aside by 7 sources
 - (mitigation, NFWF, WCB, TET)
 - ◆ ~half the acreage is part of Villages of La Costa HCP
 - ◆ Preserve has 25 separate units and ~35 miles of edge (common in mitigation conservation)
 - ◆ Six T&E/Covered Species; 13 other MHCP covered species and over 20 other sensitive species
 - ◆ MHCP "Core" area
 - ◆ Funding provides for 2/3 FT Preserve Manager, 1/3FT Assistant and 1/3 Ranger
- 
- A stylized, dark teal mountain range graphic is located in the bottom right corner of the slide, partially overlapping the text of the last bullet point.



Edge Effects

- ◆ Common area/preserve interface:
 - Trash
 - Fuel zone overwatering/runoff
 - Fuel zone vegetation dumping
 - Invasive species sources
 - Runoff (habitat type conversion)
 - Vegetation removal
 - Vandalism
- ◆ Dealing with impacts of edge affects not well addressed in HMP's
 - Time commitment, HOA/neighbor correspondence, cost to fix




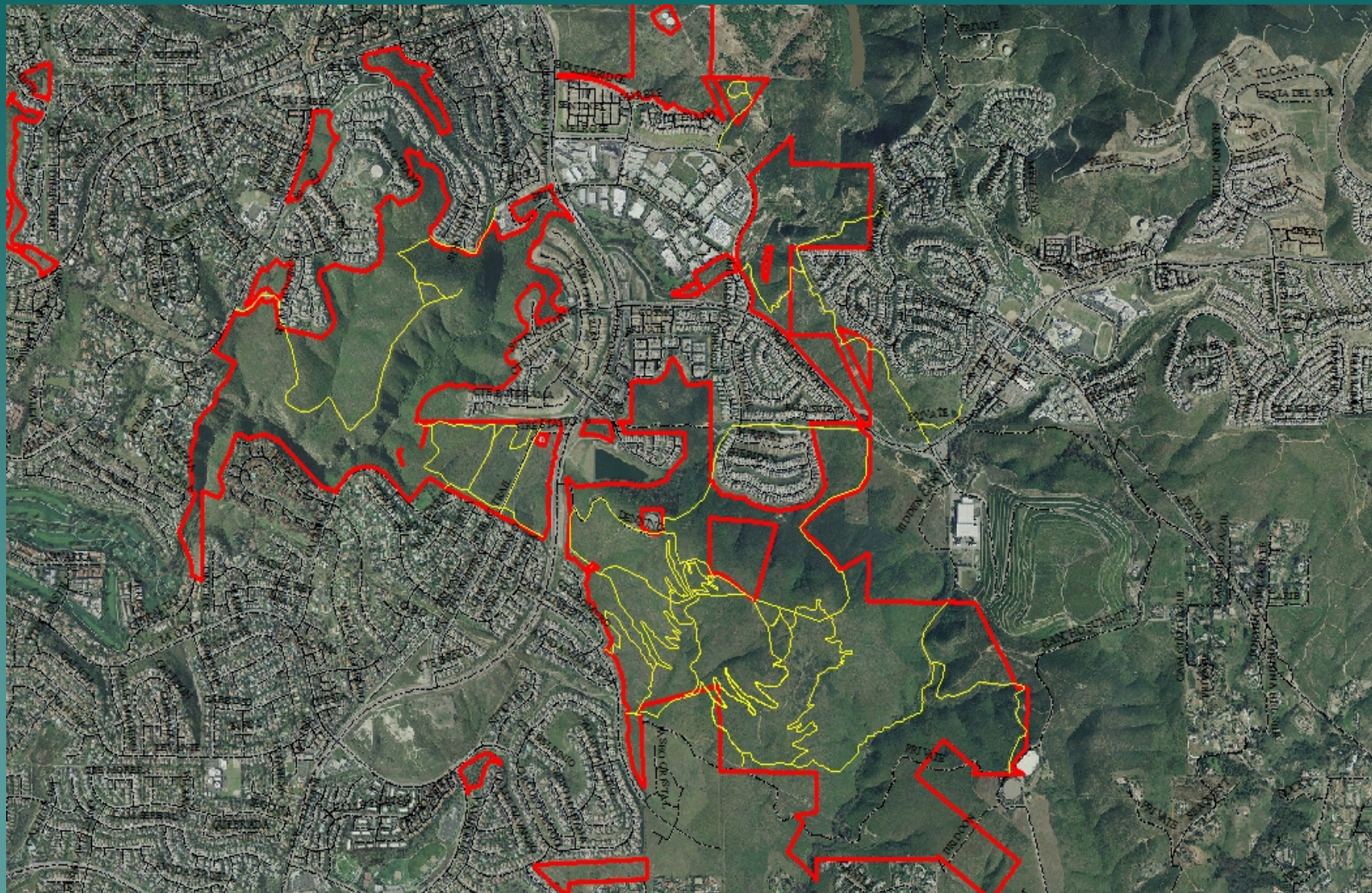


Historical land use creates monitoring and management challenges

- ◆ TLB located in grazed areas now dominated by nonnative plants
 - HMP's don't acknowledge habitat enhancement of degraded habitat that supports T&E/covered species
 - Need to monitor, but also do some restoration science and have funding to do restoration
- ◆ Most HMP's address "counting" T&E/covered species, but that's it.
 - Need to include habitat assessment
 - Some cases research funds
- ◆ Species management in fragments is very challenging

Storms Outfalls and Drains

- ◆ Preserves are water conduit for a human designed system
 - ◆ 100 year flood may not occur more than every 100 years, but the 1, 5, 10 and 20 occur more regularly
 - ◆ Many times we have to clean debris deposited at end point!
 - ◆ Type conversion and erosion
- 
- A stylized, dark teal silhouette of a mountain range is positioned in the bottom right corner of the slide, extending from the right edge towards the center.



Enforcement/Patrols

- ◆ How much patrol time is needed?
- ◆ Issues from the preserve attraction:
 - Cliff jumping
 - Rock climbing
 - Mtn biking
 - GeoCaching
 - Horses
 - Airsoft/paintball wars
 - Skateboarding in detention basins
 - Homeless encampments
 - Poaching/shooting
 - OHV
- ◆ Trails! Public access creates more problems.

Cliff Jumping in Box Canyon



60 Feet of Airtime!

https://www.youtube.com/watch?v=3xCycHCem_U





Utility roads/easements



Summary

- ◆ We need better minimum HMP standards
 - Patrol frequency
 - Edge inspections
 - Biological Monitoring
 - ◆ Monitoring frequency by species
 - ◆ Vegetation community assessments
 - (i.e. CSS plots)
 - ◆ Identify research needs
 - Better reporting standards
 - More requirements to restore/enhance degraded portions of preserves
- ◆ If you want to save money
 - No trails and no public access!! Fences and gates!
 - Put fencing responsibility on HOA

What happened to TET?

- ◆ Lack of funding to run business and manage preserves (running company and preserves on a budget of about \$200-250k)
 - ◆ ~60 acre average preserve size (~3,500-4,000 acres)
 - ◆ ~60 preserves with average of \$64k in endowment which generate \$3.2k of annual funding
 - ◆ ~Remove top 4 funded preserves the average endowment drops to \$43k or \$2.2k in annual funding
 - ◆ ~10 unfunded preserves
 - ◆ Is this happening again?
- 