

Management & Monitoring Strategic Plan (MSP) Workshop *Monitoring Element of the MSP Update 2016*

October 26, 2016

Yvonne Moore, Administrator
Kris Preston, Ecologist
Emily Perkins, GIS Manager
Trish Smith, Coordination Support (TNC)



Sarah McCutcheon, Project Coordinator
Brenda McMillan, Outreach Coordinator
Annabelle Bernabe, Data/GIS Assistance

Purpose & Format of Workshop

Purpose

- ❖ Stakeholder input
- ❖ Answer questions



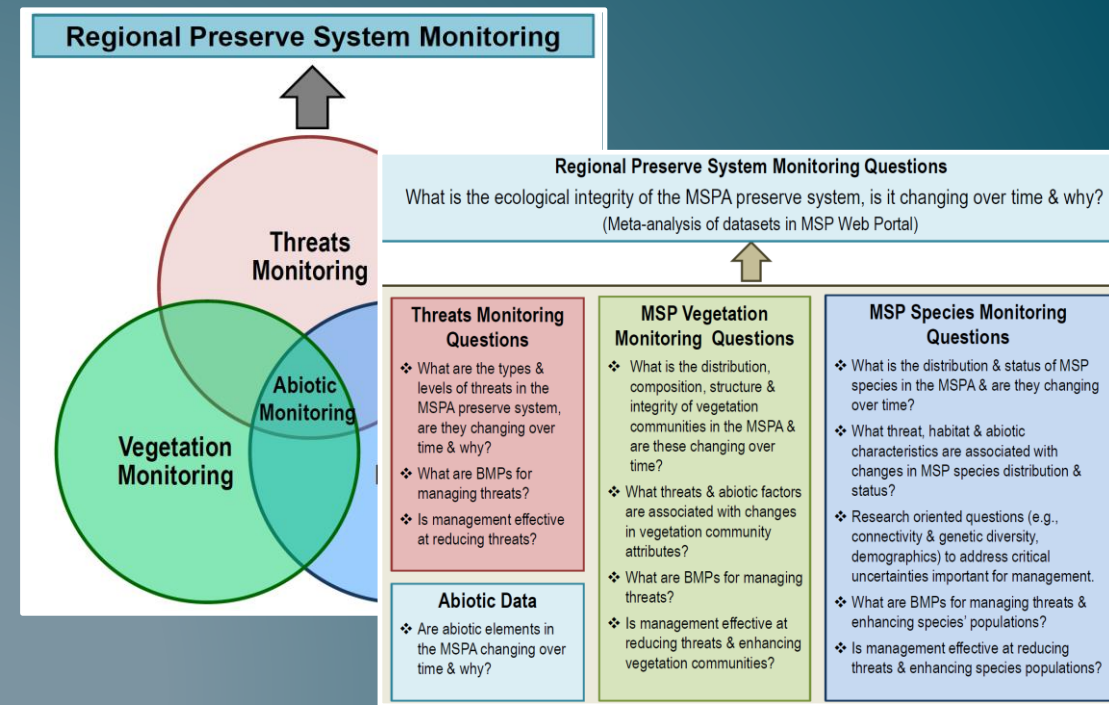
Format

- ✓ Overview MSP
- ✓ Draft Monitoring Element



Handouts & Feedback

- This week:
 - Powerpoint presentation
- No later than Nov 18:
 - Draft MSP monitoring sections and objectives
- By Dec 16:
 - Please send us comments – verbal, written, email, underline strikeout, etc.



San Diego Management & Monitoring Program (SDMMP)



The SDMMP is a science based program seeking to provide a coordinated approach to management and biological monitoring of lands in San Diego that have been conserved through various conservation planning and mitigation efforts.

- **Initiated:** 2008
- **Funding:** SANDAG's *TransNet* Environmental Mitigation Program (EMP) - \$4M/yr
- **Location:** U.S. Geological Survey - San Diego
- **Website:** portal.SDMMP.com
- **Staff:** 7 - plus numerous partners

Partners

BLM, CDFW, CA
LCC, CNPS,
CDPR,
CALTRANS,
CNLM, City
Carlsbad, City
Chula Vista City
San Diego, CBI,
County San
Diego, EDI,
EHL/EHC, LPLF,
military, NCC,
NROC, RCA,
RSABG,
SANDAG, SDAS,
SDSU, SDZ-ICR,
SDRVC, SELC,
TNC, UCD-WHC,
USFWS, USFS,
USGS, others



Regional Collaboration

- **Hold Regular Meetings to Coordinate with Partners**
- **Implement Regional Monitoring Studies**
- **Assist with Transnet Land Management Grant Program**
- **Develop Strategic Management and Monitoring Plans**
- **Oversee the Development of a Centralized Database for Management and Monitoring Data**
- **Provide Technical Support to Land Managers**
 - Project planning & study design, implementation support, GIS support, data management, data analysis

Why have Strategic Plans?



- ITOC Audit Report (2012)
 - Program headed in the right direction
 - A “road map” with measurable objectives to guide future expenditures is needed
 - Future budgets should be based on the “road map”
- Use existing/create new strategic plans to serve as “road map”

Purpose of the Strategic Plans

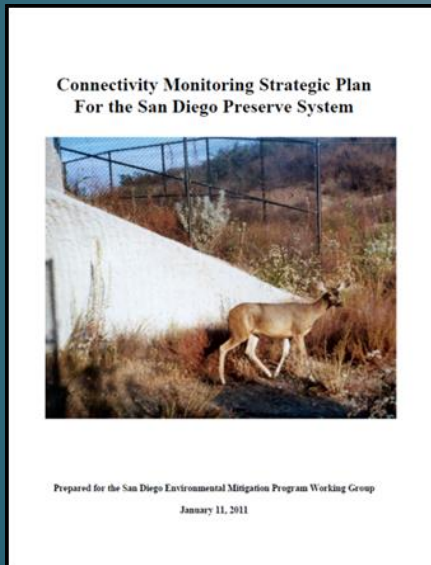
Identify actions that are needed to: ensure the persistence of identified species; maintain ecosystem processes; and maintain healthy natural communities in an efficient and integrated manner across the preserve system



To provide a framework to prioritize the implementation of and funding for regional management actions and monitoring studies

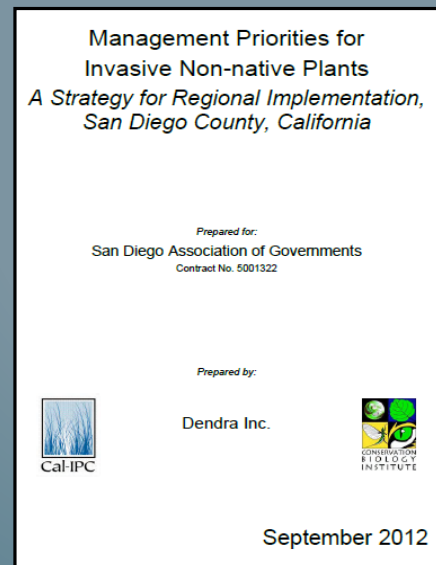
Completed Strategic Plans Documents

Connectivity Monit.
Strategic Plan
(CMSP) Jan 2011



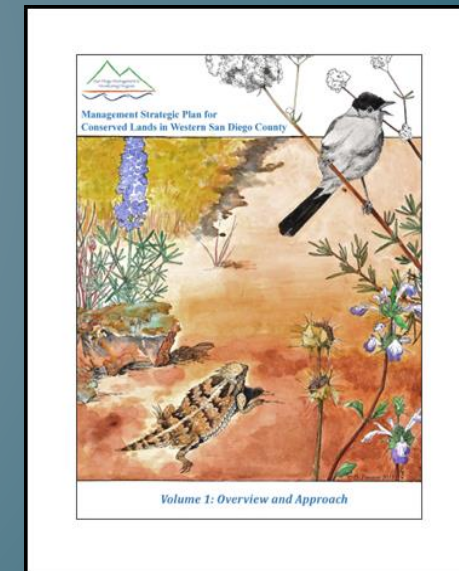
Implementation
started 2011

Invasive Plant
Strategic Plan
(IPSP) Sept 2012



Implementation
started 2015

Management
Strategic Plan
(MSP) Aug 2013



Implementation
started 2014

Management Strategic Plan Update 2016

Connectivity SP
Invasive Plant SP
Management SP
+
★ Monitoring
Wildfire
Invasive Animals



**Management &
Monitoring
Strategic Plan
(MSP)
“Roadmap”
2017-2021**

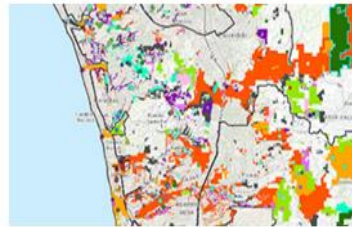
San Diego Management & Monitoring Program

[Home](#) / [MSP Portal](#)

MSP Portal

- <http://portal.sdmmp.com>

The MSP Portal is a toolbox for accessing information about the [Management Strategic Plan \(MSP\)](#). The information available includes goals, objectives, actions, background & rationale, tables of occurrences, and maps for MSP Species, Vegetation, Threats/Stressors & Preserves, & Projects. The MSP Portal also provides the ability to track progress on goals, objectives, and actions. There are three ways to search the MSP Portal



Spatial search

Search for an area of interest & view information on a basic map

[Spatial search](#)


Topic search

Search for information by topic or keywords

[Topic search](#)


Track progress

Track progress of MSP goals, objectives, & actions

[Track progress](#)

Management Strategic Plan



The Management Strategic Plan (MSP) is a comprehensive approach for management of multiple plant and animal species within the region. By establishing biological goals and measureable objectives, the MSP provides for a coordinated effort to implement management actions. The MSP categorizes and prioritizes species and vegetation communities, identifies geographic locations for management actions, provides specific timelines for implementation, and establishes a process for coordination and implementation. The MSP is intended to be a living document with revisions to specific sections occurring as new information becomes available or as situations change (e.g., wildfire). More comprehensive updates of the MSP will generally occur every 4 to 5 years.

When completely updated (ca. June 2016), there will be 5 elements incorporated into the MSP:
[Management](#), [Monitoring](#), [Connectivity](#), [Fire](#), & [Invasive Species](#)

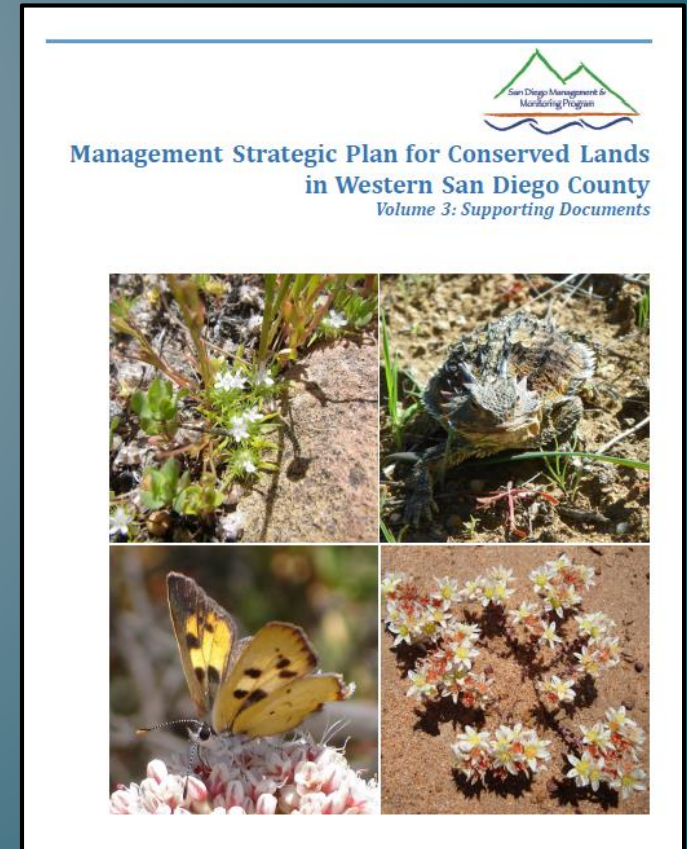
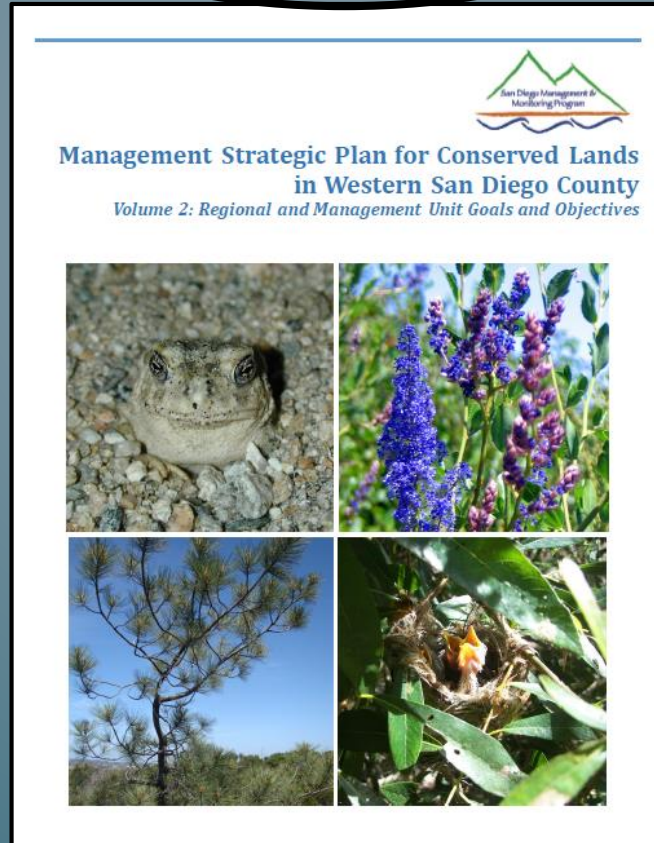
Organization of the MSP

2A - Regional Preserve System
2B - Threats/Stressors
2C - Vegetation
2D - Species

Vol 1: Overview and Approach

Vol 2: Goals and Objectives

Vol 3: Supporting Documents

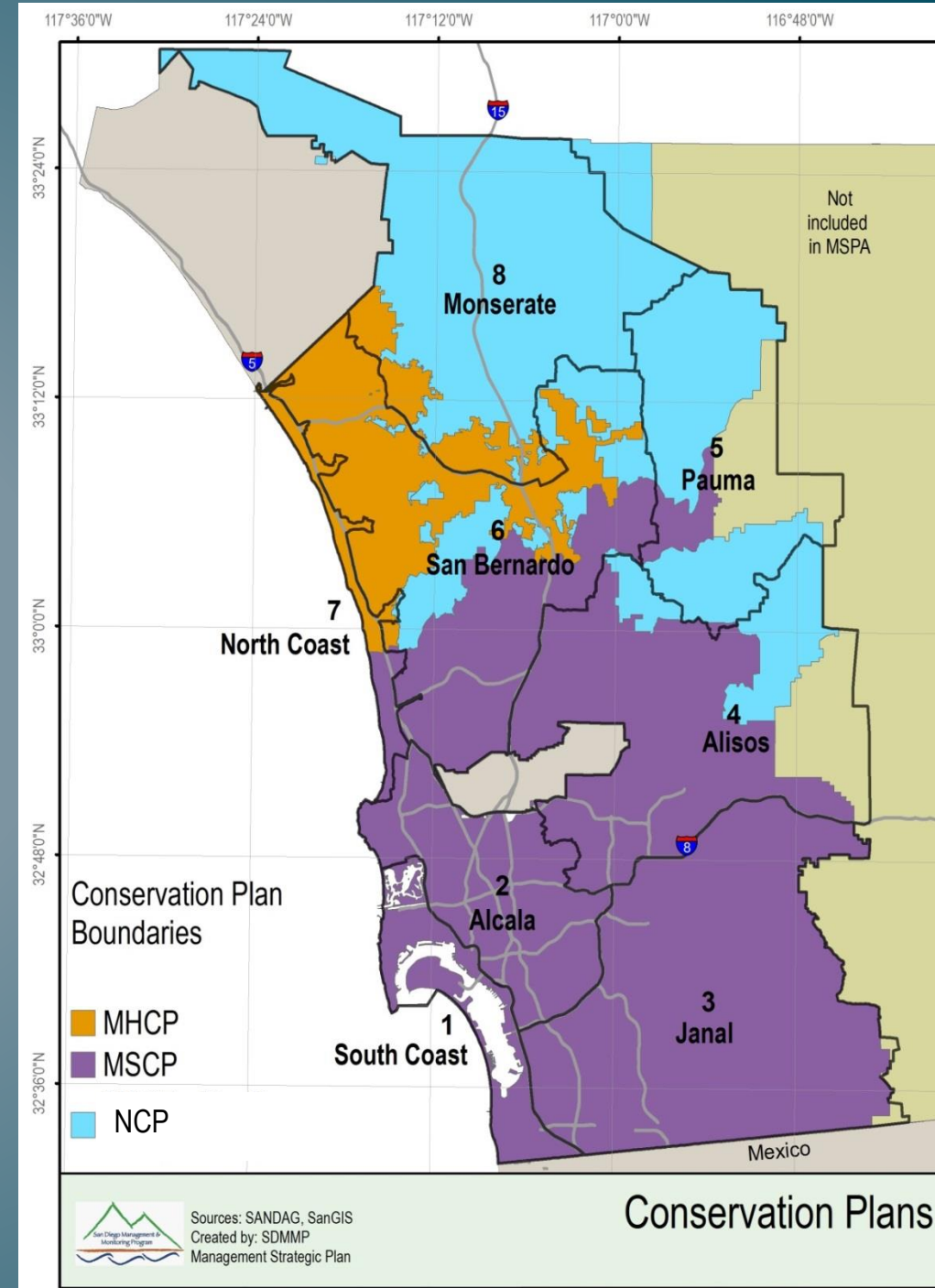


Management Strategic Plan Area

- ❖ MSPA aka “MSP Area”
- ❖ Western San Diego County

2013 MSP

- ❖ 8 MUs - Management Units
- ❖ 3 NCCP Plan areas + San Diego PUD lands

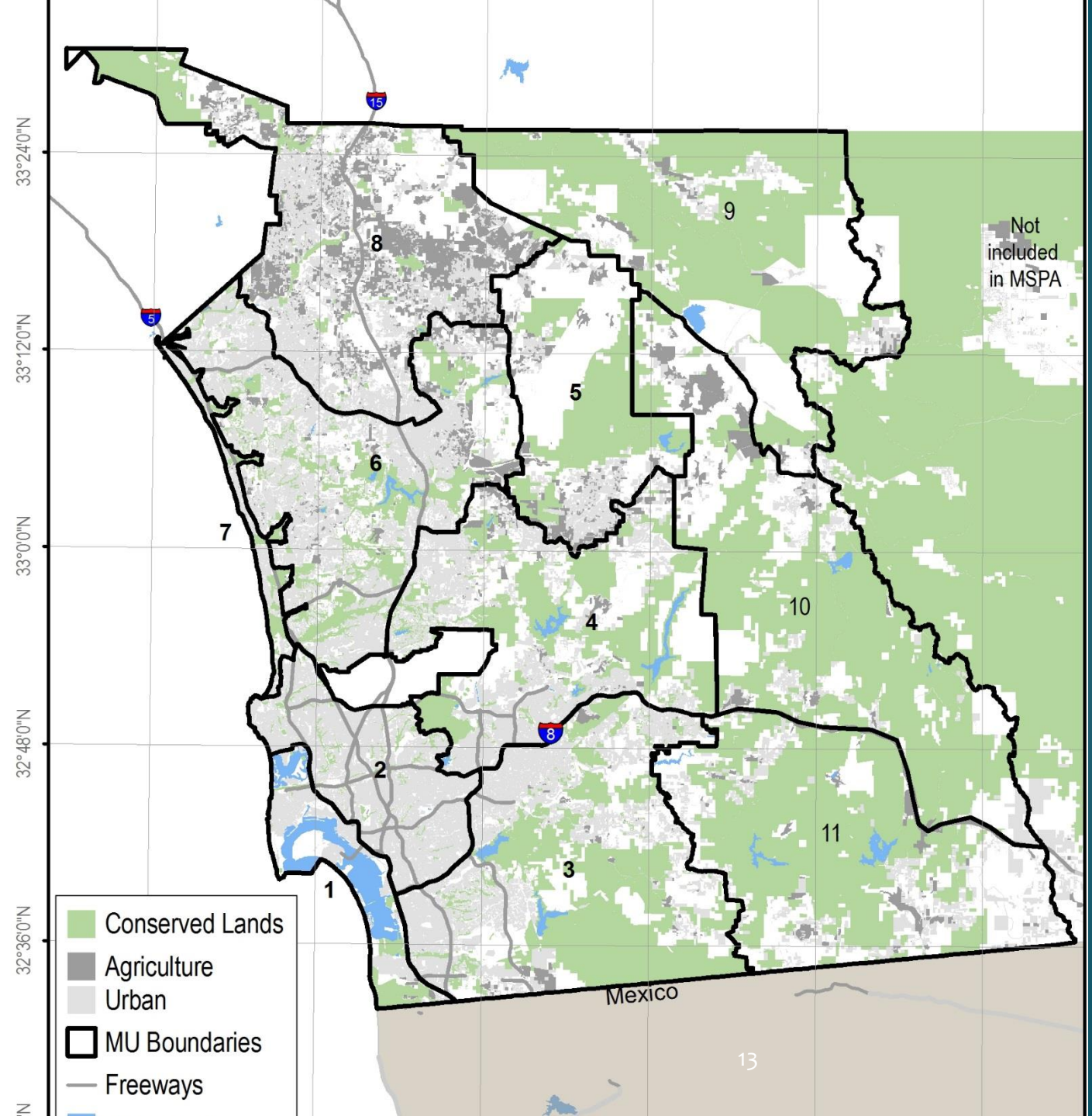


2016 MSP Update

- ❖ MSPA extended to boundary with desert region

- ❖ 11 MUs

- ❖ Only willing partners on Conserved Lands



Volume 2: Goals and Objectives

111 MSP Species (108 MSCP, MHCP, draft NoCo Plan)

57 plants

7 invertebrates

1 fish

3 amphibians

5 reptiles

30 birds

8 mammals



5 MSP Management Categories

Species Focused Management

SL	29 spp. greatest risk of loss entirely from MSPA
SO	17 spp. high risk of loss of significant occurrences
SS	9 spp. stable but need species level management

Vegetation Focused Management

VF	32 spp. limited distribution or specific veg char.
VG	24 spp. less restricted distrib. or no specific veg char.

Volume 2: Goals and Objectives

<i>11 MSP Vegetation Types</i>	Coastal Bluff Dunes
Coastal Sage Scrub	Salt Marsh
Chaparral	Riparian Forest & Scrub
Grassland	Torrey Pines Forest
Vernal Pools/Alkali Playa	Tecate Cypress Forest
Freshwater Marsh	Oak Woodland

Volume 2: Goals and Objectives

<i>12 MSP Threats</i>	
Altered Fire Regime	Loss of Connectivity
Altered Hydrology	Parasitism/disease
Climate Change	Pesticides, rodenticides, and herbicides
Herbivory/Predation	Powerline and wind facilities
Human Use of the Preserves	Urban development
Invasive Species	Loss of Integrity

Draft Monitoring Element

- *Open Kris PPT*