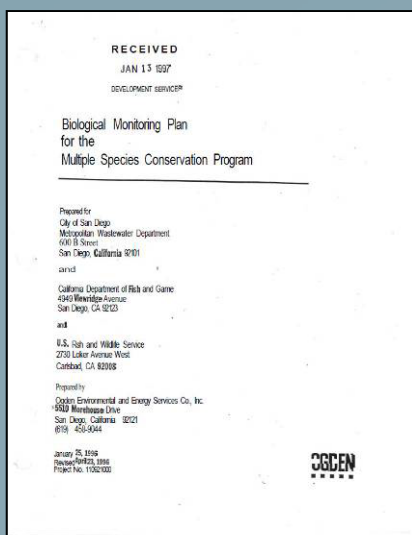
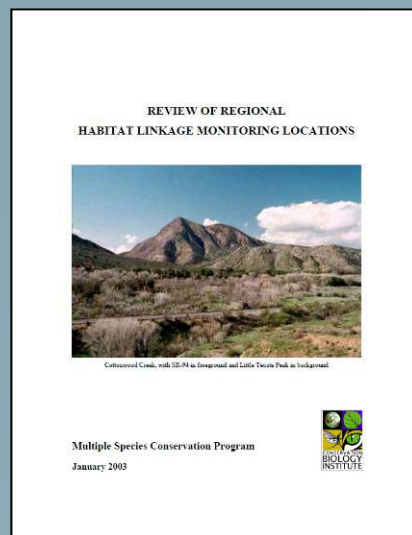




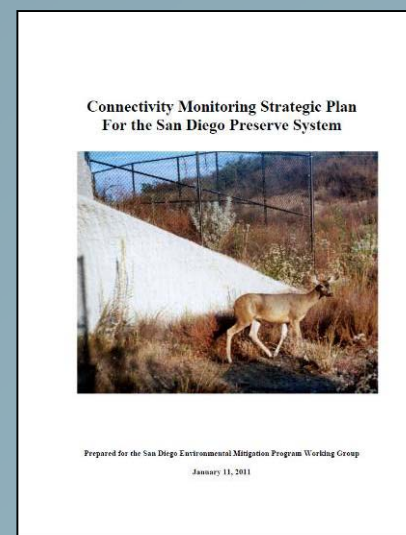
# 2011 San Diego County Linkages Evaluation



Ogden 1996. Biological Monitoring Plan for the Multiple Species Conservation Program

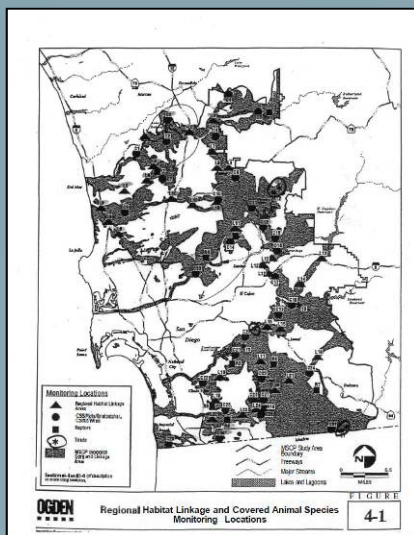


CBI 2003. Review of Regional Habitat Linkage Monitoring Locations



SDMMP 2011. Connectivity Monitoring Strategic Plan for the San Diego Preserve System.

# 2011 San Diego County Linkages Evaluation



Ogden 1996. Biological Monitoring Plan for the Multiple Species Conservation Program

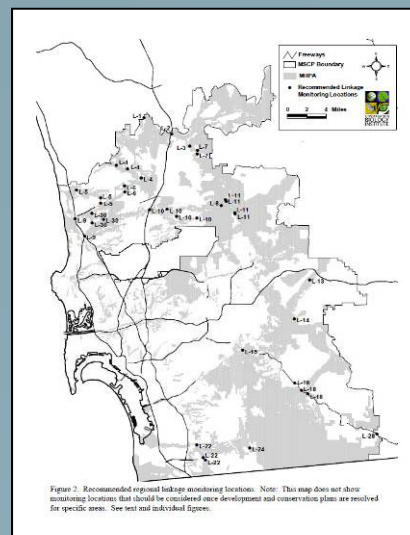
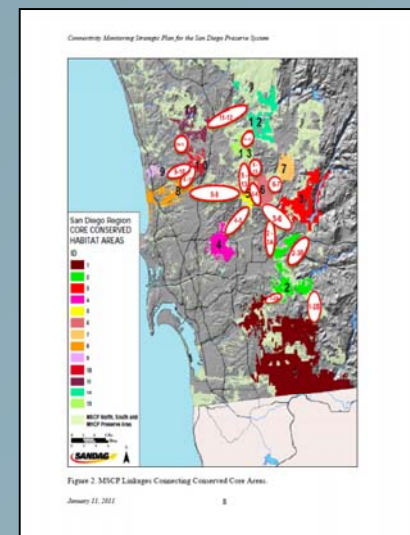


Figure 4-1. Recommended regional linkage monitoring locations. Note: This map does not show monitoring locations that should be considered once development and conservation plans are resolved for specific areas. See text and individual figures.

CBI 2003. Review of Regional Habitat Linkage Monitoring Locations

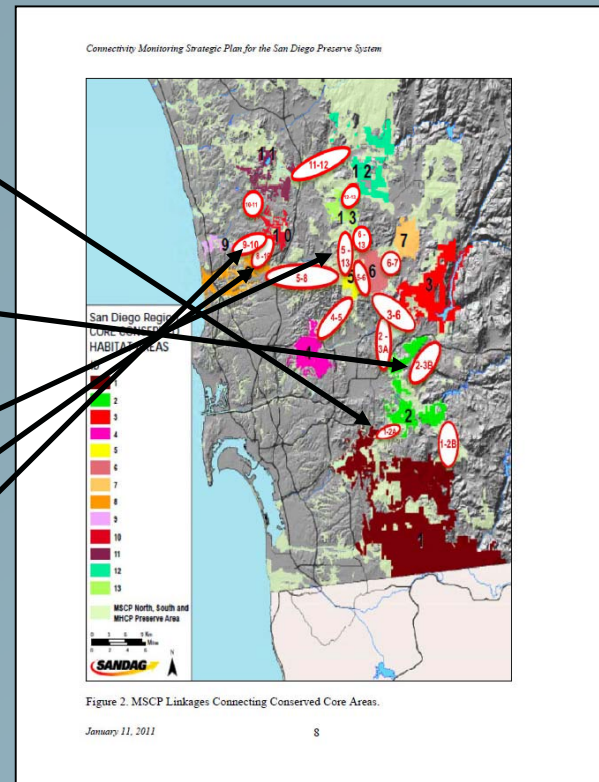


SDMMP 2011. Connectivity Monitoring Strategic Plan for the San Diego Preserve System.

# 2011 San Diego County Linkages Evaluation

## Priority list:

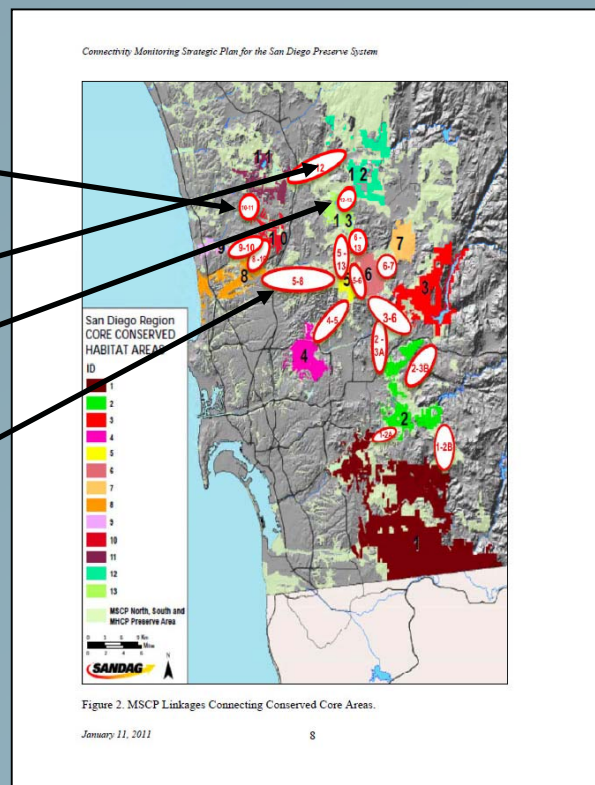
- CA-1 to CA-2
  - Otay Mountain/RJER to SDNWR/Crestridge (north of SR-94 at Las Montañas)
- CA-2 to CA-3
  - McGinty Mountain/Crestridge to Harbison Canyon/El Capitan Reservoir (Puetz Valley Road and I-8)
- CA-5 to CA-13
  - Sycamore Canyon/Goodman Ranch to Mt. Woodson (Scripps-Poway Parkway underpass)
- CA-8 to CA-10
  - Los Peñasquitos Canyon to Black Mountain
- CA-9 to CA-10
  - Del Mar Lagoon to Black Mountain



## 2011 San Diego County Linkages Evaluation

### Priority list:

- CA-10 to CA-11
  - Black Mountain to Lake Hodges/Del Dios
- CA-11 to CA-12
  - Lake Hodges/Del Dios to Ramona Grasslands/Boden Canyon
- CA-12 to CA-13
  - Ramona Grasslands/Boden Canyon to Mt. Woodson/Blue Sky ER
- CA-5 to CA-8
  - Sycamore Canyon/Goodman Ranch to Torrey Pines/Del Mar Mesa/Los Peñasquitos Canyon





## 2011 San Diego County Linkages Evaluation

**-Linkage between  
CA-8 and CA-10**

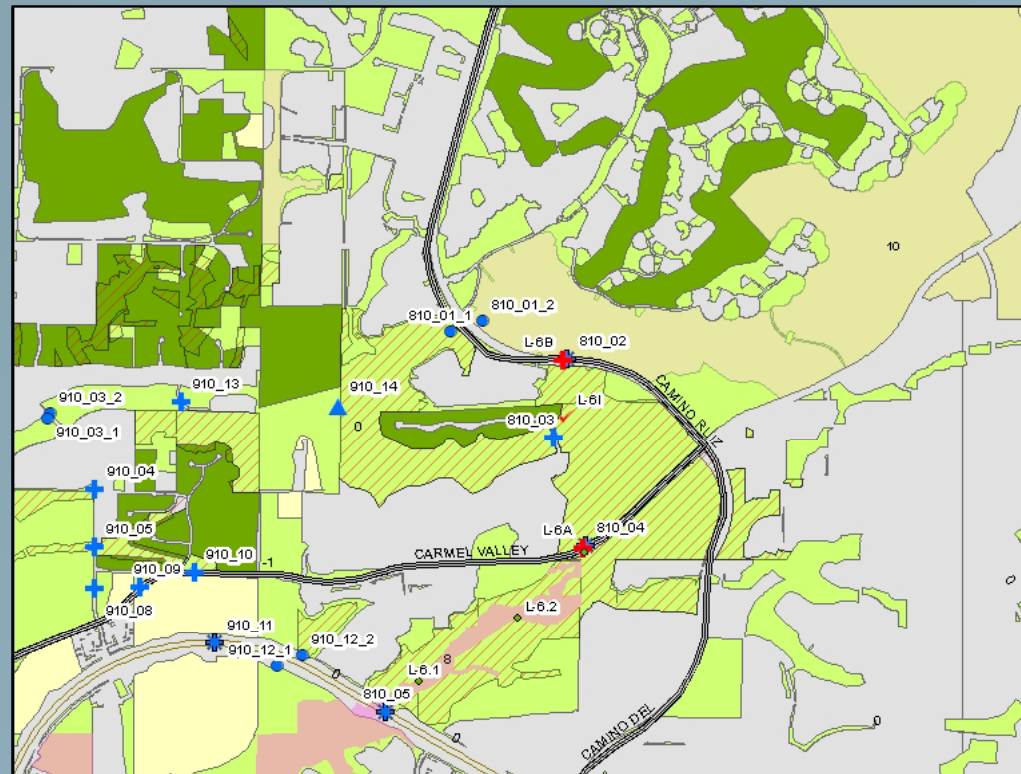
-Conserved  
Lands Database

-Ogden 1996 &  
CBI 2003 points

-Land use data

-Additional  
evaluation points

-High likelihood  
of connectivity



## 2011 San Diego County Linkages Evaluation

### -Linkage between CA-8 and CA-10

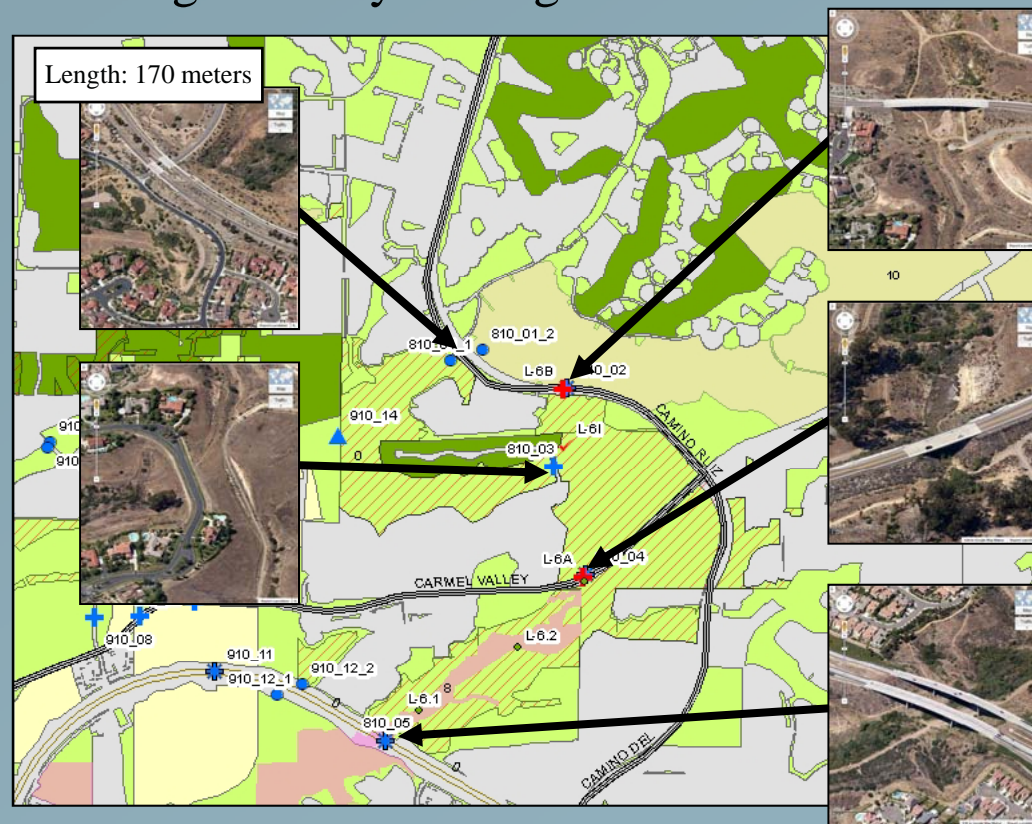
-Conserved  
Lands Database

-Ogden 1996 &  
CBI 2003 points

-Land use data

-Additional  
evaluation points

-High likelihood  
of connectivity



## 2011 San Diego County Linkages Evaluation

### -Linkage between CA-9 and CA-10

-Conserved  
Lands Database

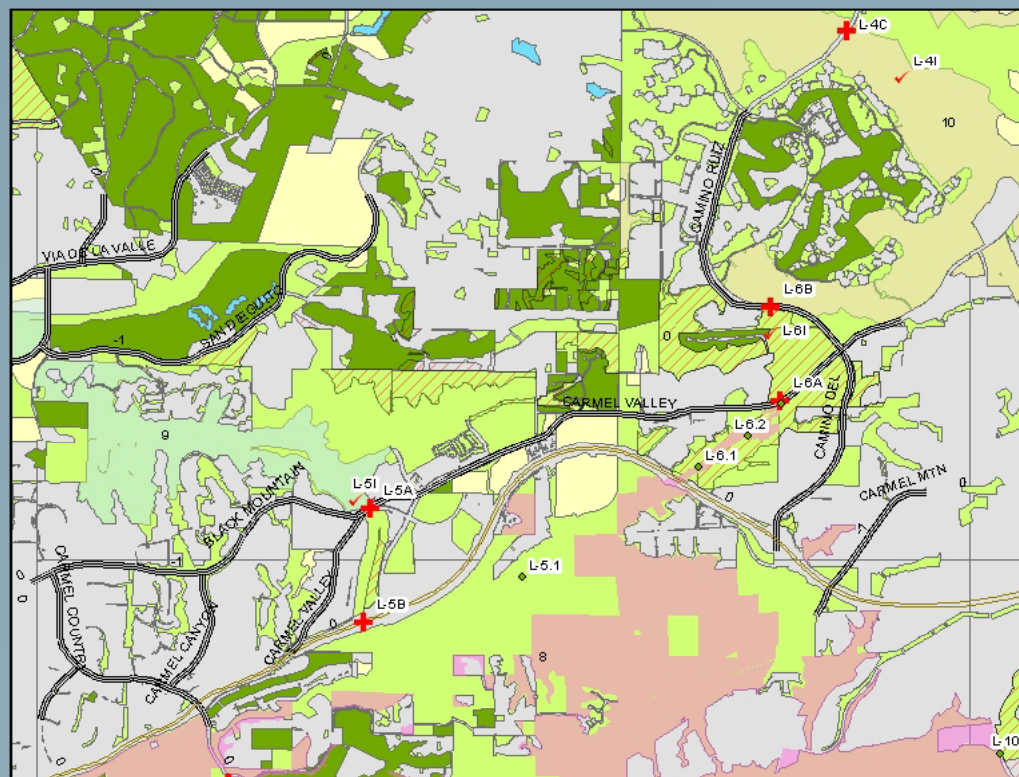
-Ogden 1996 &  
CBI 2003 points

-Land use data

-Additional  
evaluation points

-Low likelihood  
of connectivity

-San Dieguito  
River Valley &  
south through CA-  
8





## 2011 San Diego County Linkages Evaluation

### -Linkage between CA-9 and CA-10

-Conserved  
Lands Database

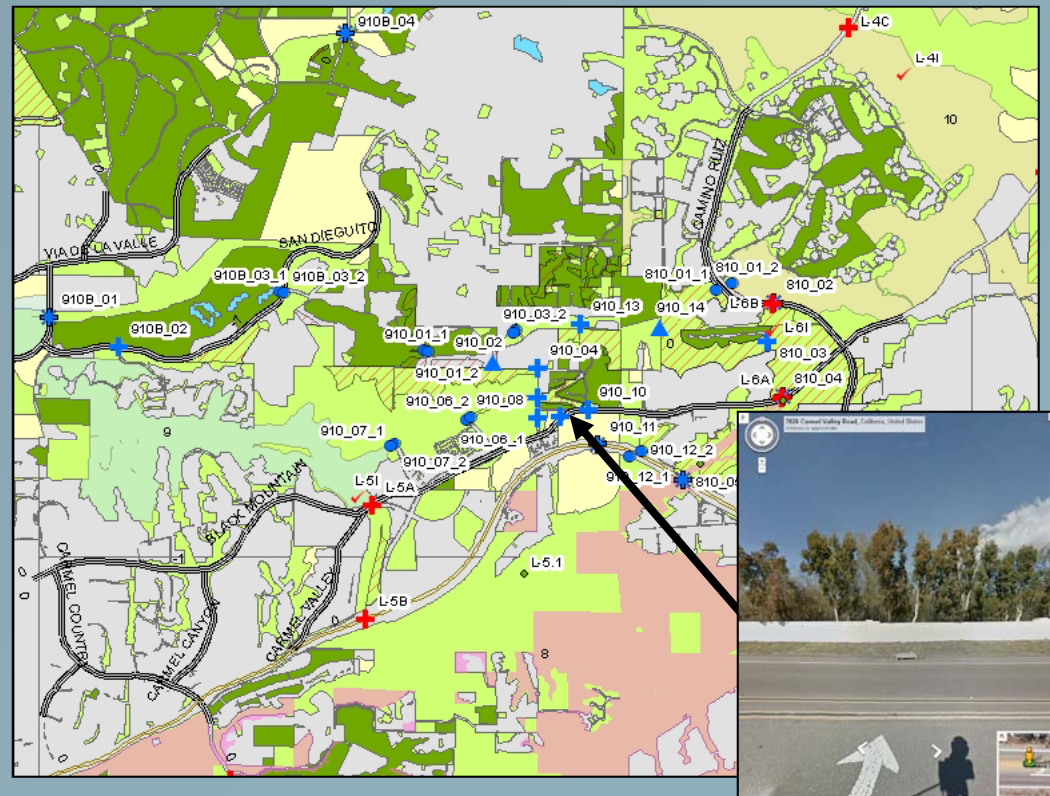
-Ogden 1996 &  
CBI 2003 points

-Land use data

-Additional  
evaluation points

-Low likelihood  
of connectivity

-San Dieguito  
River Valley &  
south through CA-  
8



## 2011 San Diego County Linkages Evaluation

### -Linkage between CA-9 and CA-10

-Conserved  
Lands Database

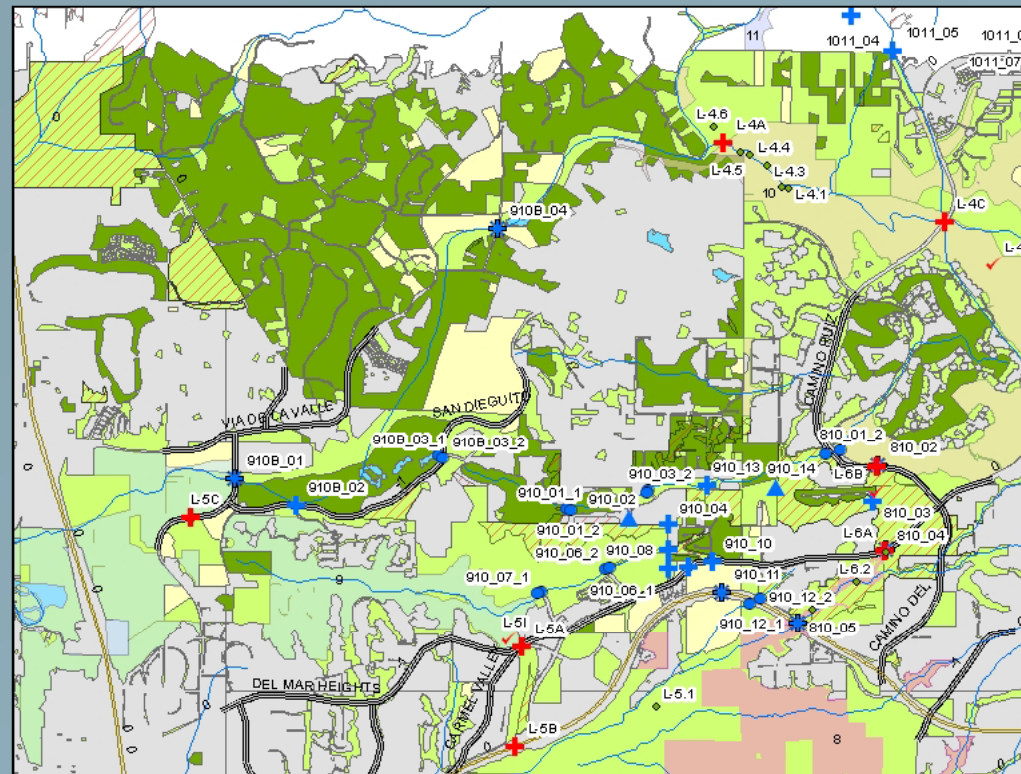
-Ogden 1996 &  
CBI 2003 points

-Land use data

-Additional  
evaluation points

-Low likelihood  
of connectivity

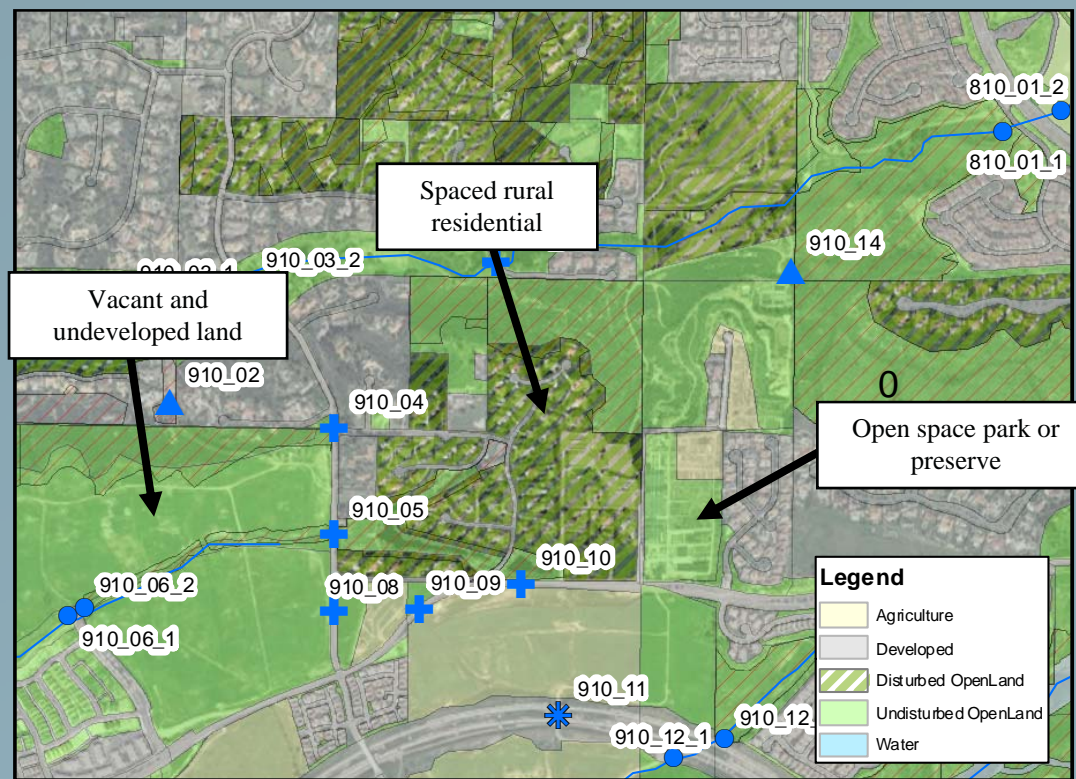
-San Dieguito  
River Valley &  
south through CA-  
8



## 2011 San Diego County Linkages Evaluation

### -Multi-image approach

- land use layer
- aerial imagery layer
- oblique view
- bird's eye view
- street view



## 2011 San Diego County Linkages Evaluation

### Summary Evaluation:

•**CA-1 to CA-2:** Otay Mountain/RJER to SDNWR/Crestridge (north of SR-94 at Las Montañas)

•Non-functional

- Highway 94 – minimal barriers and insufficient structure
  - Recommendation** – when SR-94 is re-developed, include wildlife barriers and crossing structures
- Mexican Canyon/Jamul Drive – rural sprawl
- Cottonwood Golf Course – barriers and removal of riparian cover
  - Recommendation** – work with golf course owners/management to restore riparian habitat along Sweetwater River

•**CA-2 to CA-3:** McGinty Mountain/Crestridge to Harbison Canyon/El Capitan Reservoir (Peutz Valley Road and I-8)

•Non-functional

- Harbison Canyon/Galloway Valley – Rural sprawl
  - Recommendation** – provide safe routes around human development
- Interstate-8/Alpine Blvd/Peutz Valley Road – Choke point
  - Recommendation** – extensive rebuilt of entire intersection?!\$?!\$





## 2011 San Diego County Linkages Evaluation

### Summary Evaluation:

- **CA-5 to CA-13:** Sycamore Canyon/Goodman Ranch to Mt. Woodson (Scripps-Poway Parkway underpass)
  - Functional but needs improvement
    - Scripps-Poway Parkway wildlife tunnel – supports diverse wildlife
    - Poway Road – barrier to wildlife movement
- **CA-8 to CA-10:** Los Peñasquitos Canyon to Black Mountain
  - Functional but needs improvement
    - Camino Ruiz over McGonigle Canyon – sparse vegetation
- **CA-9 to CA-10:** Del Mar Lagoon to Black Mountain
  - Non-functional
    - Urban and rural sprawl – focus on alternate conservation
- **CA-10 to CA-11:** Black Mountain to Lake Hodges/Del Dios
  - Functional but needs improvement
    - San Dieguito River at the west end of these areas is the best option
- **CA-11 to CA-12:** Lake Hodges/Del Dios to Ramona Grasslands/Boden Canyon
  - Non-functional
    - I-15 bridge over Lake Hodges – water level precludes any terrestrial wildlife movement under the bridge

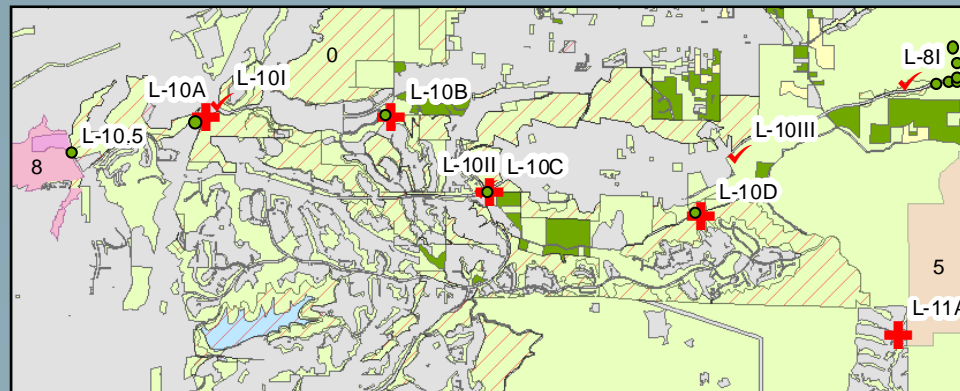




# 2011 San Diego County Linkages Evaluation

## Summary Evaluation:

- **CA-12 to CA-13:** Ramona Grasslands/Boden Canyon to Mt. Woodson/Blue Sky ER
  - Functional but need improvement
    - Rural sprawl between Ramona and Mt. Woodson throughout Archie Moore Road
    - Starvation Mountain
- **CA-5 to CA-8:** Sycamore Canyon/Goodman Ranch to Torrey Pines/Del Mar Mesa/Los Peñasquitos Canyon
  - Non-functional
    - Urban/Rural/Industrial sprawl creates a complicated maze that may be too difficult for wildlife to navigate



## 2011 San Diego County Linkages Evaluation

### Recommendations:

- Roadway reconstruction –when freeways and major roads are re-developed, suitable wildlife structures must be included
  - SR-94 near Las Montañas, Interstate-8, and Poway Road
- Barrier and wildlife exclusion structures – fencing with wildlife escape options and self-closing gates for human usage
  - Scripps-Poway Parkway, SR-94, and SR-67
- Cooperation for conservation – working with public and private land owners and agencies to conserve habitat and connectivity
  - Golf course owners/management, water districts, and reserve owners
- Habitat acquisition and establishment – acquire new properties where appropriate and work to restore vegetation at critical points
  - San Dieguito River, Sweetwater River, and Camino Ruiz over McGonigle Canyon



# Questions:

