

# FY 14/15, 15/16 Strategic Plan Priorities

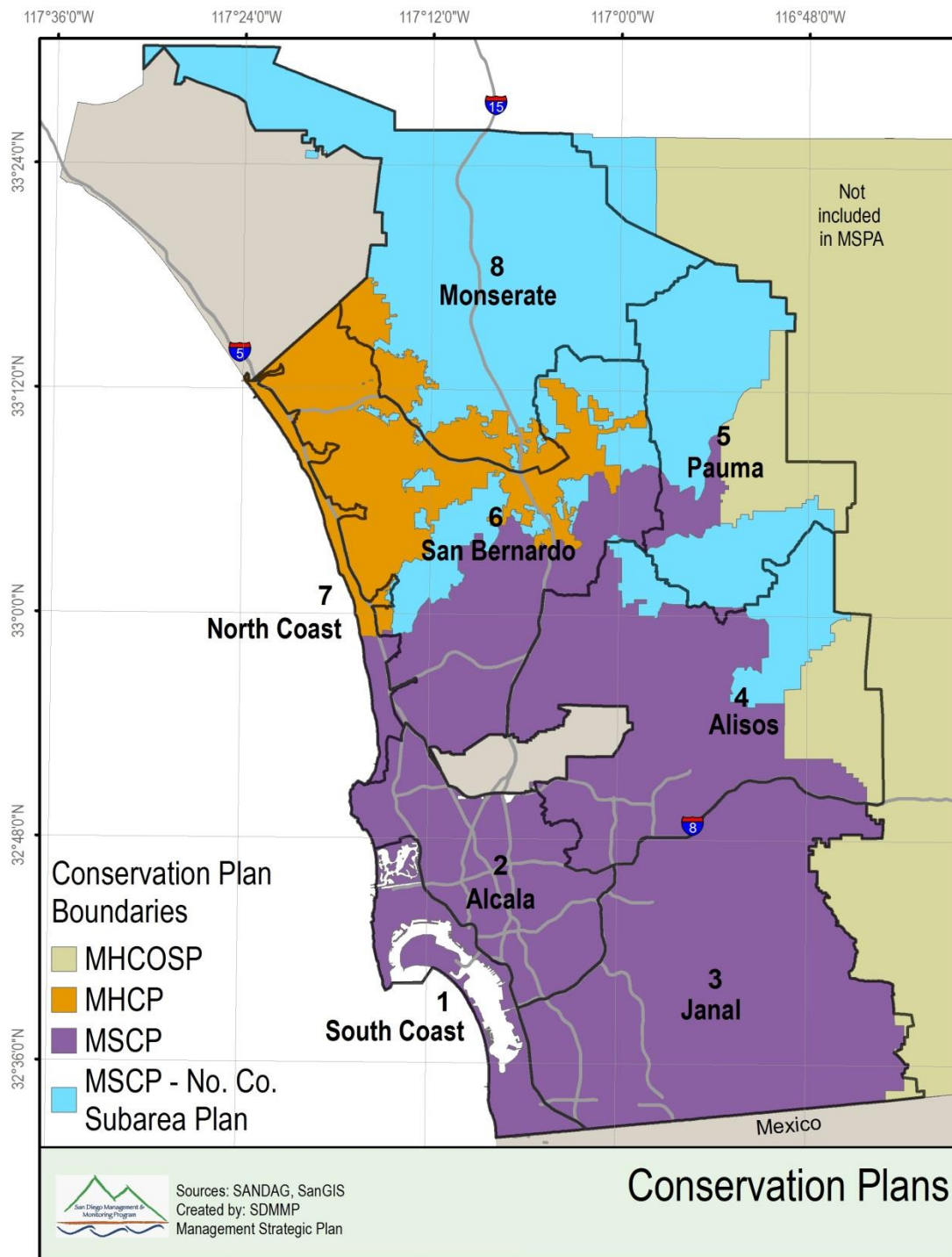
## Background

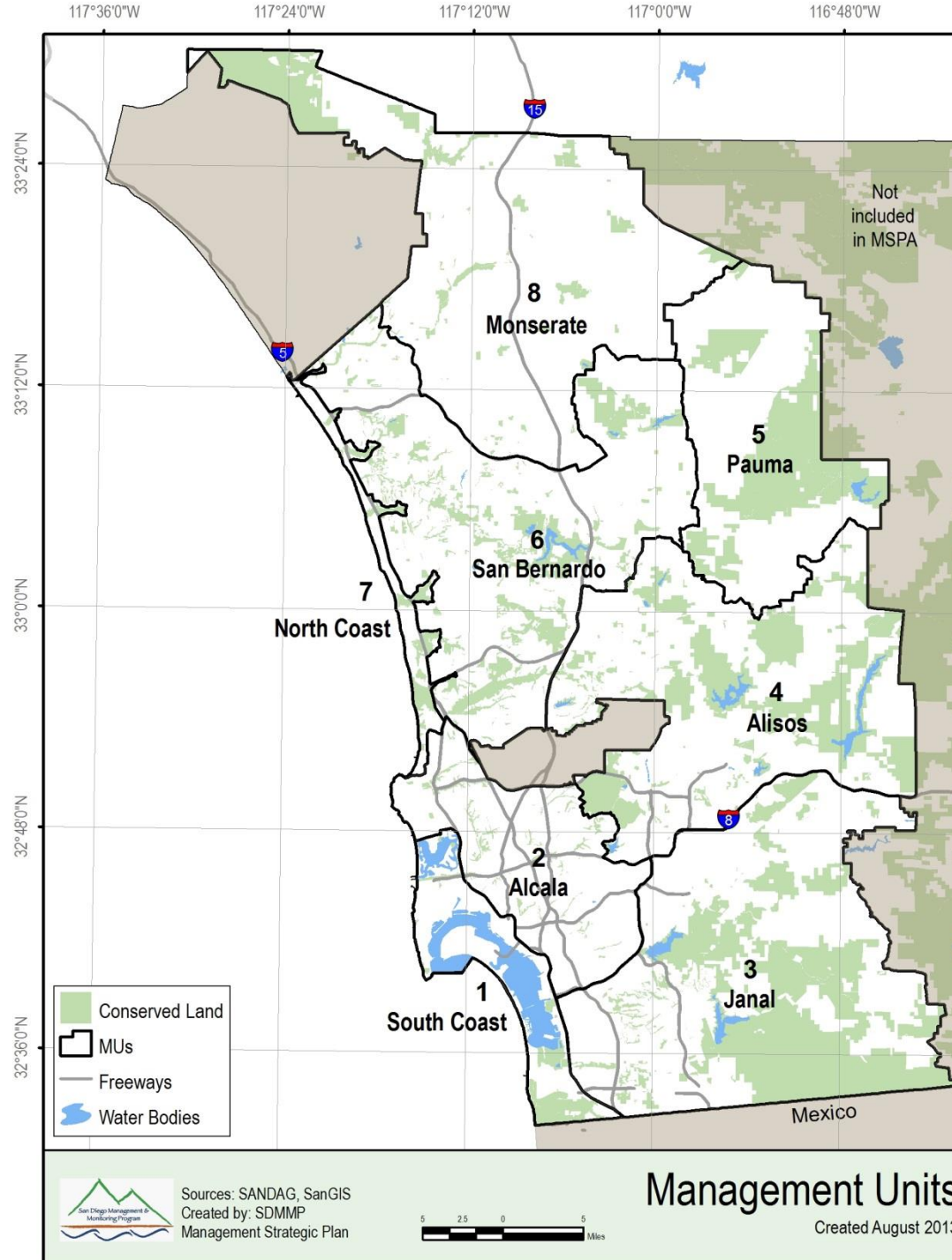
### Needs Assessment

### ITOC audit report

- **Program headed in the right direction**
- **A “road map” with measurable objectives to guide future expenditures efficiently is needed**
- **Future budgets should be based on the “road map”**

**Strategic Plans serve as the “road map”**





# FY 14/15, 15/16 Strategic Plan Priorities

- **Management Strategic Plan**
  - **Species**
  - **Vegetation Communities**
  - **Threats/Stressors**
    - **Fire Planning**
    - **Invasive Plant Strategic Plan**
- **Connectivity Strategic Plan**
- **Monitoring Strategic Plan**

# Purpose of the Strategic Plans

Identify Actions that are needed to: ensure the persistence of identified species; maintain ecosystem process; and maintain healthy natural communities in an efficient and integrated manner across the MSPA preserve system

# FY 14/15, 15/16 Priorities



# Implementing the Strategic Plans

- **Funding Implementation of Strategic Plans**
  - **Preserve entity management funding**
  - **Transnet**
  - **State and Federal funds**
  - **Grants**
  - **Mitigation funds**

*Improving Conservation Outcomes Through  
Collaboration and Coordinated Management and  
Monitoring*



# Management Strategic Plan FY 14/15, 15/16 Priorities

Management Strategic  
Plan

Fire SP

Invasive  
Plant SP



Species



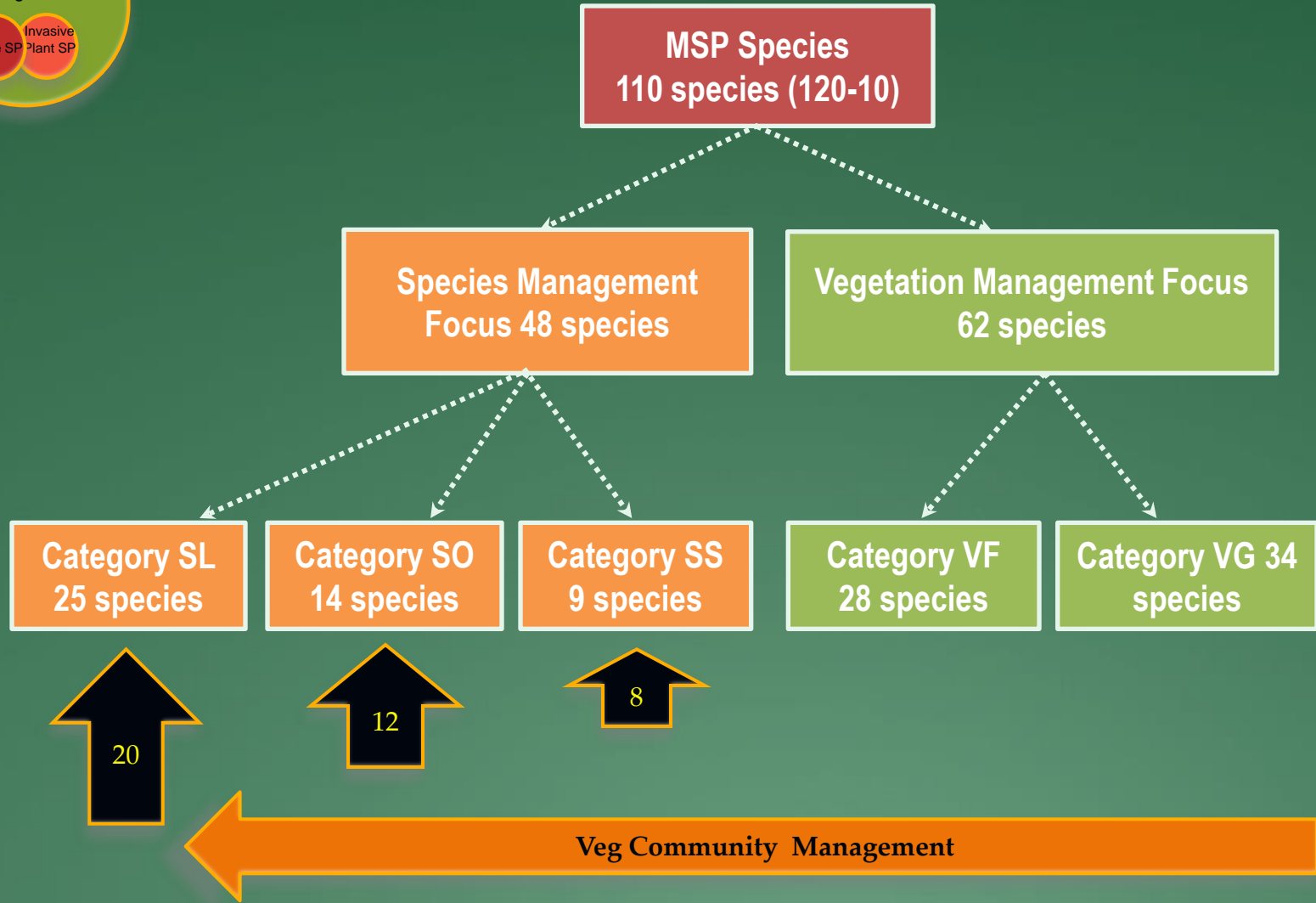
Threats/Stressors



Vegetation communities



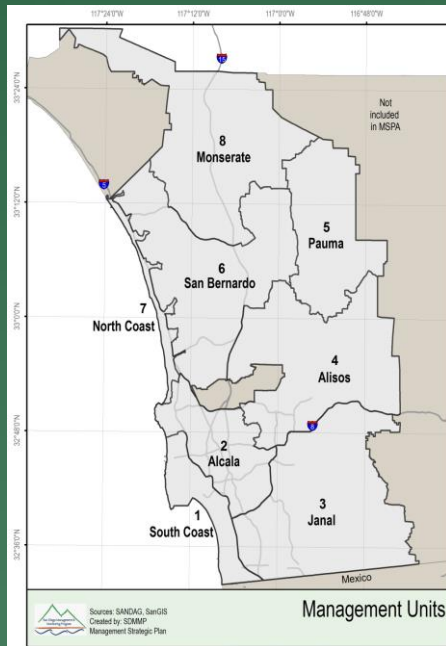
# FY 14/15, 15/16 Species Priorities



# FY 14/15, 15/16 Priorities - Species

- Plants

- IMG – SL, SO, SS
- Increased resilience is needed
  - Shaw's agave 1 & 7
  - Aphanisma 1
  - Salt marsh bird's beak 1
  - Orcutt's spineflower 1 & 7
  - San Miguel savory 3, 4 & 8
  - Orcutt's birdsbeak 3
  - Short-leaved dudleya 6 & 7
  - Coast wallflower 1, 6, & 7
  - Willow monardella 4 & 6
  - Heart-leaved pitcher sage 4 & 8
  - Chaparral nolina 4, 5 & 8
  - Mexican flannelbush 3
  - Orcutt's hazardia 6 & 7



# FY 14/15, 15/16 Priorities - Species



## Animals – SL and SO

- Willow flycatcher
- Hermes copper
- Burrowing owl
- Quino checkerspot
- Western pond turtle (multiple genetic groups)
- Pallid bat
- Cactus wren (Otay River genetic cluster)
- Townsend's big-eared bat
- Golden eagle pairs (territories)
- American badger
- Arroyo toad

# FY 14/15, 15/16 Priorities Vegetation Communities



- MUs 3, 4, 5, 6 & 8
  - Non-native grasslands
  - Coastal Sage Scrub

Goal: Improve the native grass, forb, and bare ground component (diversity and areal extent) and reduce fire spread rate and ignition potential)

# MSP FY 14/15, 15/16 Priorities – Threats/Stressors



- Connectivity
- Argentine Ants
- Urban drool
- Fire
- Human activity on preserves
- Native and non-native animal species
- Invasive plants- Level 2 and Level 4



# Willowy monardella

Status and trend- few and declining  
Threats/stressors

- Fire
- Invasive plants
- Low genetic diversity within occurrences?
- Altered hydrology

## Goals

- Maintain- 2015-2018
- Expand – 2016-2018
- New occurrences – 2019-2023

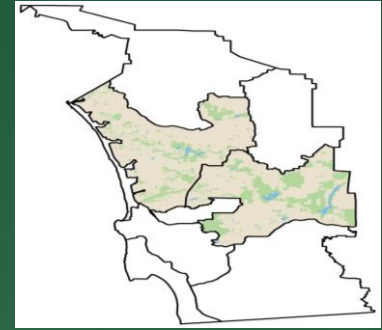




# Willowy monardella

## Actions to achieve goals:

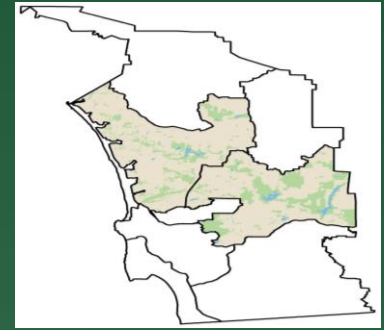
- Inspect and manage 2014-2018
- Genetics
  - Genetic Analyses 2014-2015
  - See bulking 2015-2016
  - Corrective actions 2016-2018
- Altered hydrology
  - Hydrologic studies
  - Corrective actions 2016- 2018
- Fire
  - Identify specific actions 2014-2015
  - Implement actions 2016-2018
- 2018- reevaluate status and trend of occurrence
- ? Establish New occurrences – 2019-2023







## Willowy monardella

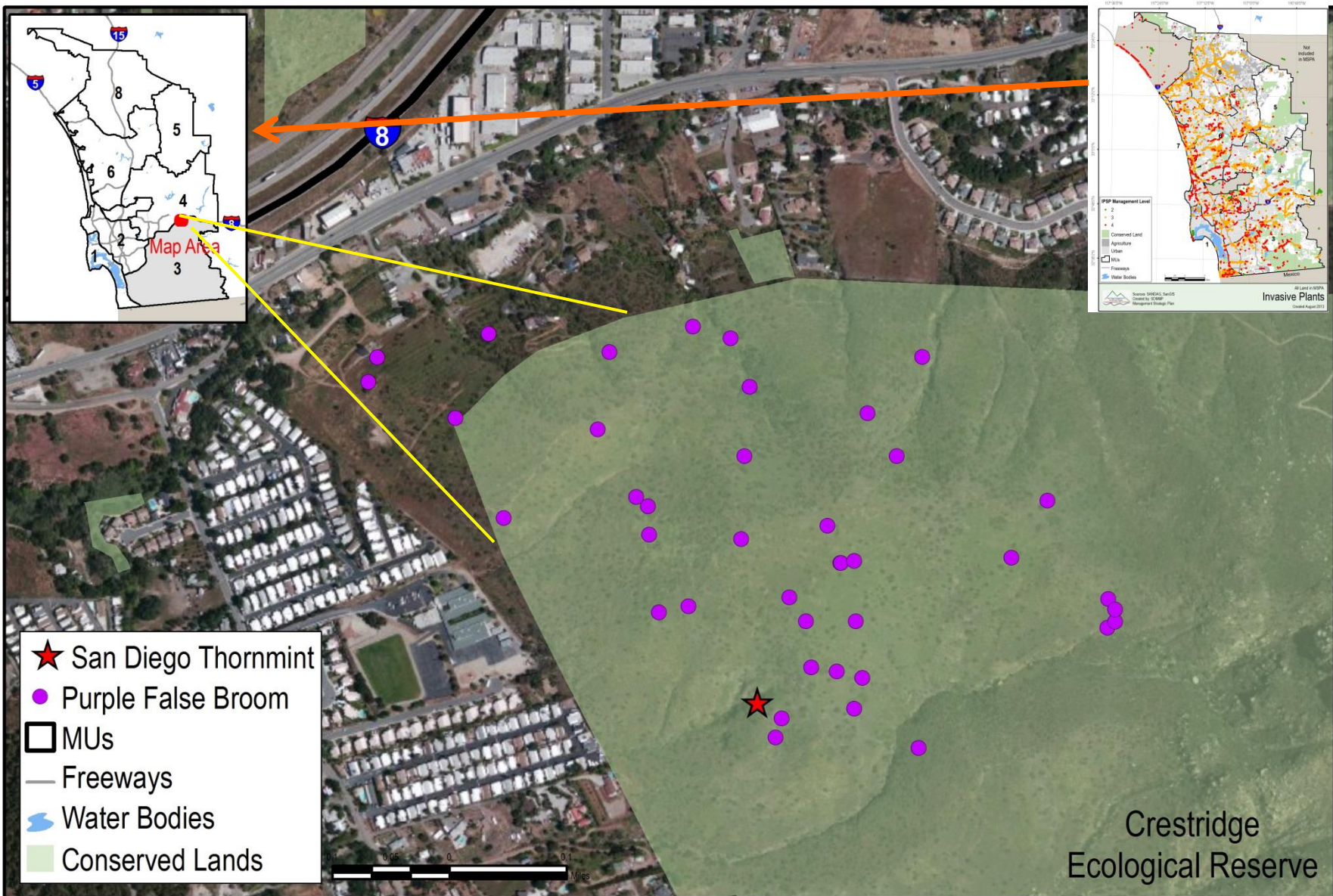


**2018- reevaluate status and trend of species**

**Occurrences maintained and some expanded?**

- **Reduced impact of invasive plants**
- **Stabilized hydrology**
- **Reduced threat from fire**
- **Improved genetic diversity**

? Establish New occurrences to improve long-term resilience – 2019-2023




Sources: SANDAG, SanGIS, see table in text  
 Created by: SDMMP  
 Management Strategic Plan

## San Diego Thornmint with Invasives

- SL
- SO
- SS

18

# FY 14/15, 15/16 Monitoring Priorities- Animals



Monitoring  
Strategic Plan

- Gnatcatcher
- Cactus wren
- American badger
- Willow flycatcher
- Golden eagle
- Arroyo toad
- Quino checkerspot butterfly
- Hermes copper
- Herpitofuana diversity
- Bats (Townsend's and Pallid)



# Connectivity Strategic Plan

## FY 14/15, 15/16 Priorities

- SR 94 Wildlife Infrastructure Plan (in prep.)
- SR 67 Wildlife Infrastructure Plan
- Connectivity studies- mtn. lion and badger
- Small animals, invertebrates, plants  
(Connectivity SP 2014)
- Wildlife infrastructure improvements



# Species in near-term trouble

Species likely to disappear from the MSPA unless actions are taken

- Willow flycatcher
- Hermes copper
- American badger
- Burrowing owl
- Pallid bat
- Townsend's big-eared bat
- Mtn. lion
- Cactus wren (Otay River genetic cluster)
- Western pond turtle (multiple genetic groups)
- Golden eagle pairs (territories)

# Potential Funding Buckets



<http://sdmmp.com> Volume 2 Sections 2, 3, and 4 Volume 2 Appendix 2 A & B



# More Information



Management  
Strategic Plan

April 16<sup>th</sup> 9:30 – 12:30 Carlsbad

April 23<sup>rd</sup> 12:00 – 3:00 USGS San Diego

<http://sdmmp.com> Volume 2 Sections 2, 3, and 4 Volume 2 Appendix 2 A & B