

San Diego's Pig Eradication Program

Megan Jennings, Ph.D.

Institute for Ecological Monitoring and Management
San Diego State University



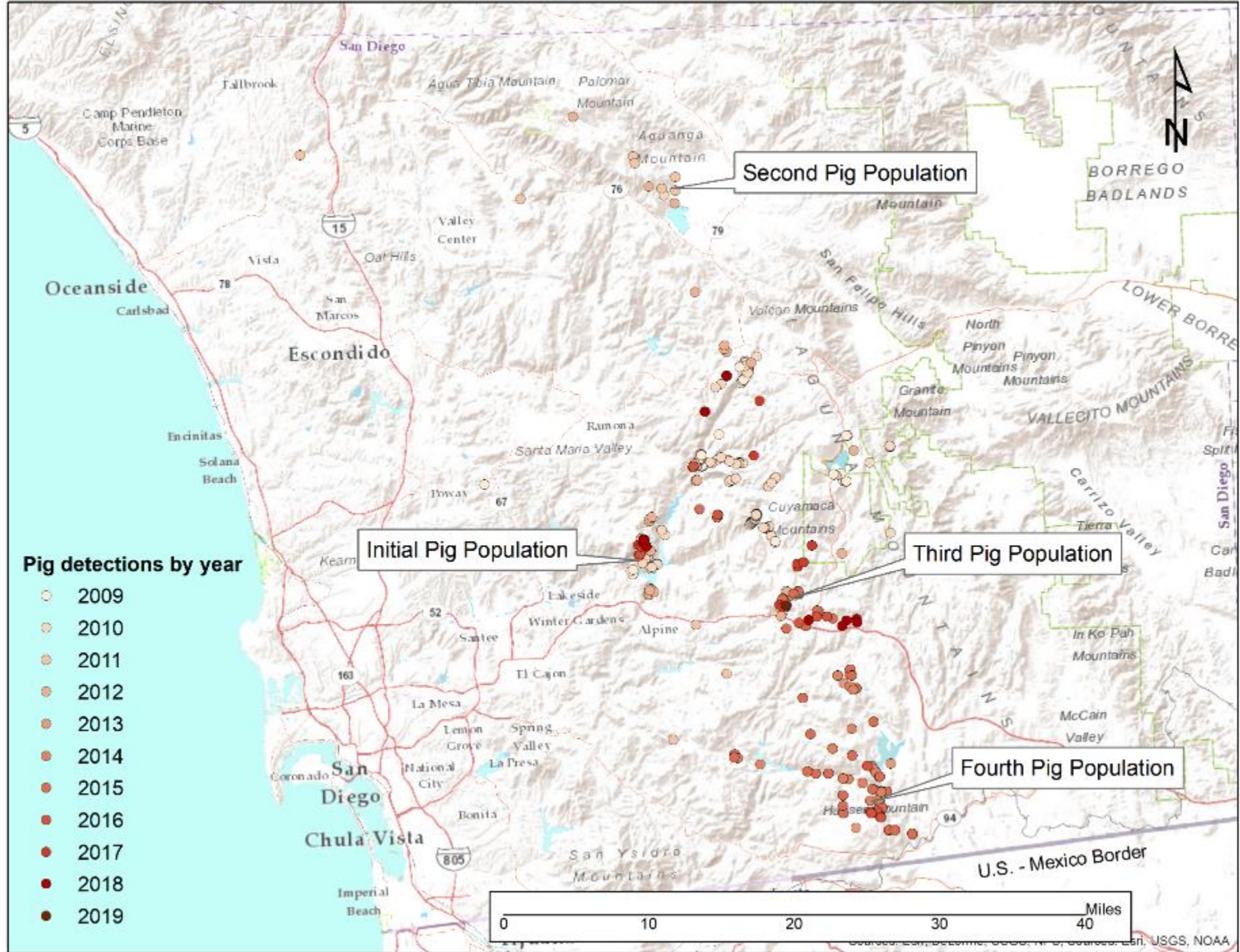
Status of Pigs

- In 39 states in the U.S.
- Game animals in some states, invasive in others
- Present in 56 – 57 of California's 58 counties
- Introduced to SD County ~15 years ago

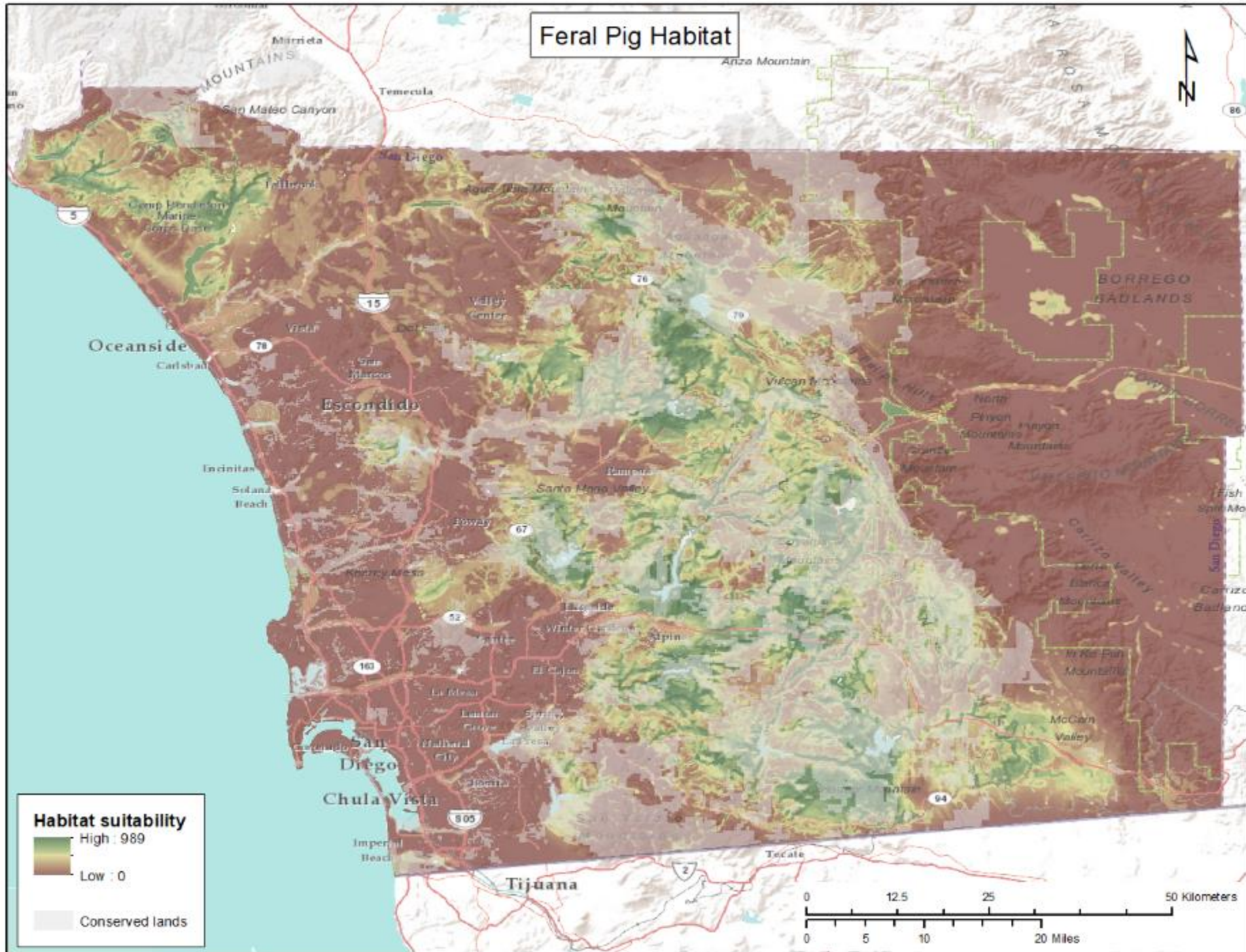


Why are pigs a problem?





Feral Pig Habitat





Inter-governmental Group

- Barona Band of Mission Indians
- Bureau of Land Management
- California Department of Fish and Wildlife
- California State Parks
- City of San Diego Public Utilities - Water
- County of San Diego Parks and Recreation
- Helix Water District
- US Forest Service
- US Fish and Wildlife Service
- USDA Wildlife Services
- Viejas Band of Kumeyaay Indians
- Vista Irrigation District
- Others (DoD, other tribes, water districts)

Approaches

Removal

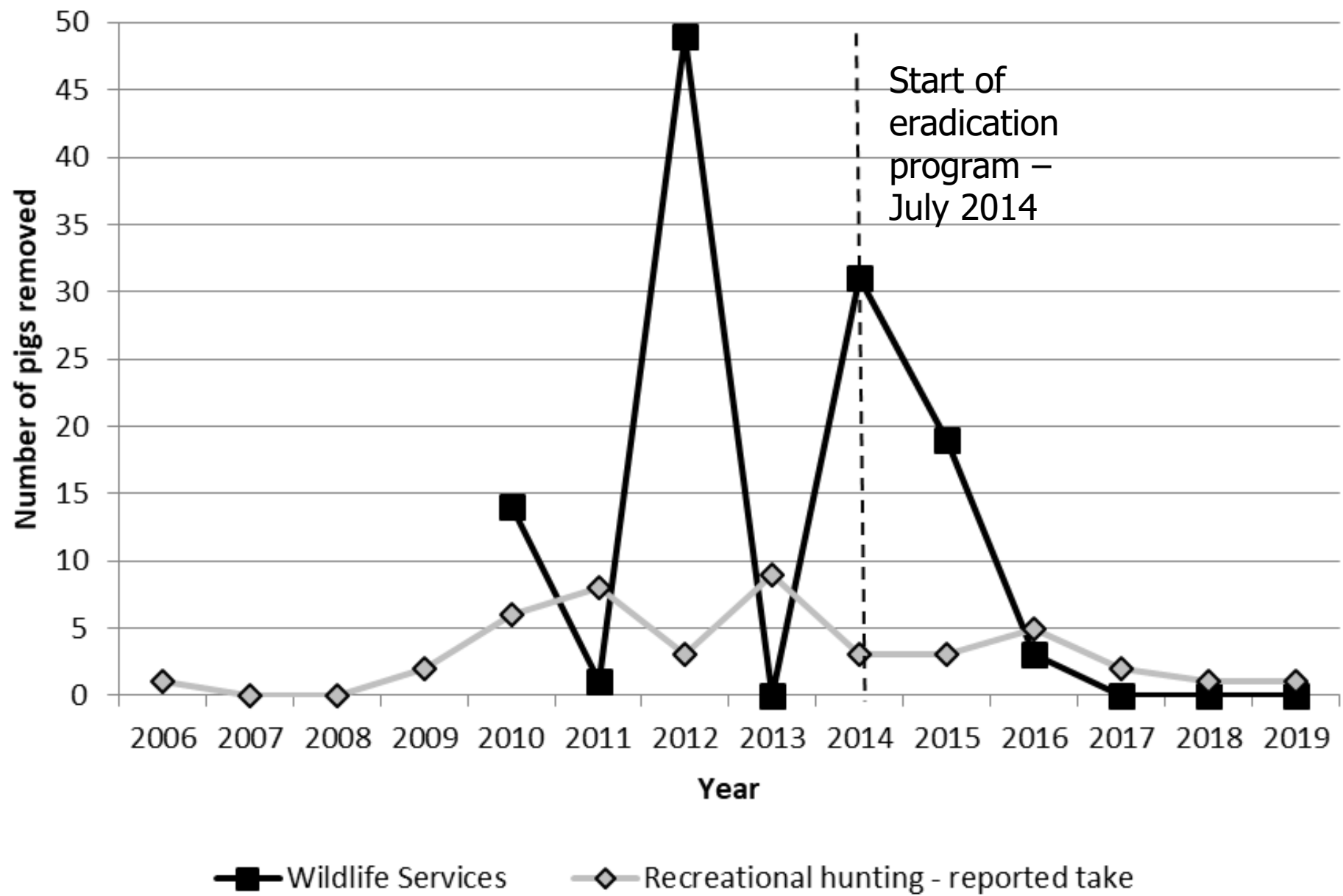
- Corral traps
- Cage traps
- Hounds
- Foot snare
- Night vision
- Shooting



Monitoring

- Cameras
- Sign surveys
- Aerial surveys (WS)
- Detector dogs (WS)
- eDNA (WS)





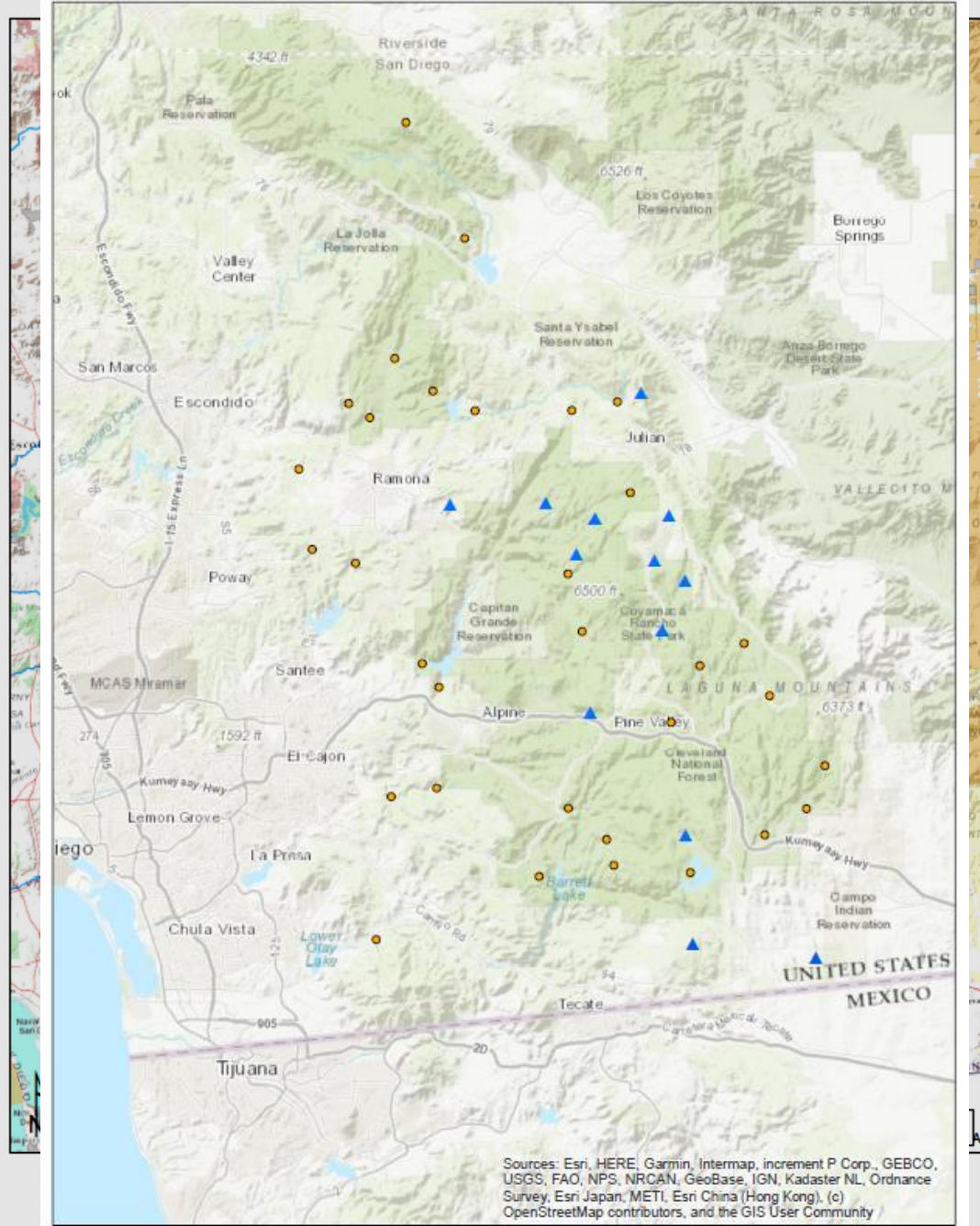
n = 117

n = 44

Have we been successful?

- Few known animals remaining
 - BUT detection and population estimation is challenging
- Negative survey data
- Certification of eradication





Active Trail Cameras

- Original Cameras
- ▲ New Cameras

0 2.75 5.5 11 Miles

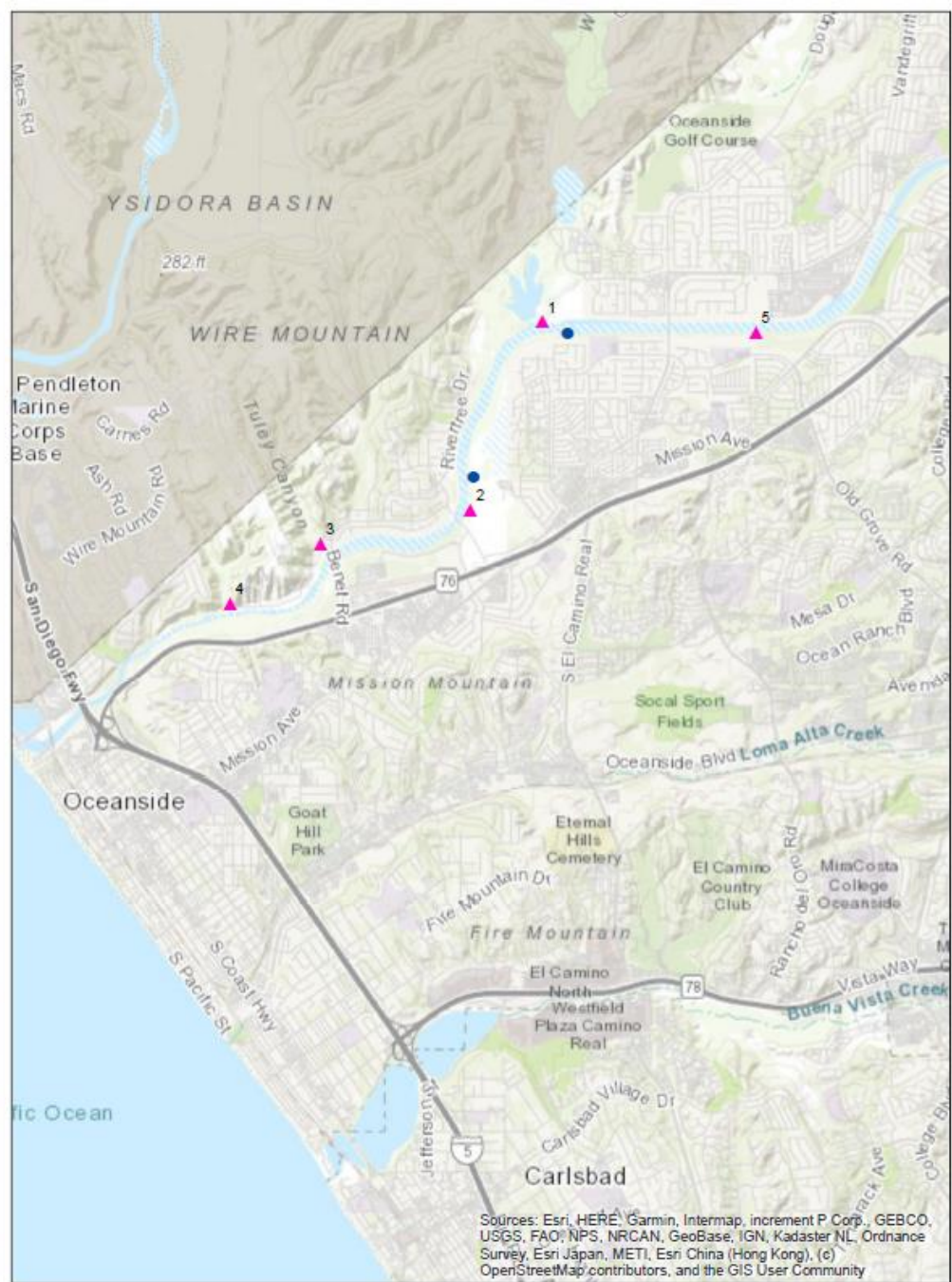


What Next?

- Early detection and rapid response protocol
- Continued/expanded monitoring
- Confirm eradication through 2-3 years of negative survey data



50°F 06/06/10 07:38 AM 5555555555



Pig Sightings & Potential Camera Locations

● Pig Sighting ▲ Potential Camera Location





WANTED: REPORTS OF FERAL PIG SIGNS

SIGNS OF FERAL PIGS

Tracks: Pig tracks show a two-toed hoof and often dewclaws that are slightly wider than the hoof. In comparison with a deer track, pig tracks will be more round in shape with blunted toes and wide dewclaw marks, if the dewclaw registers.

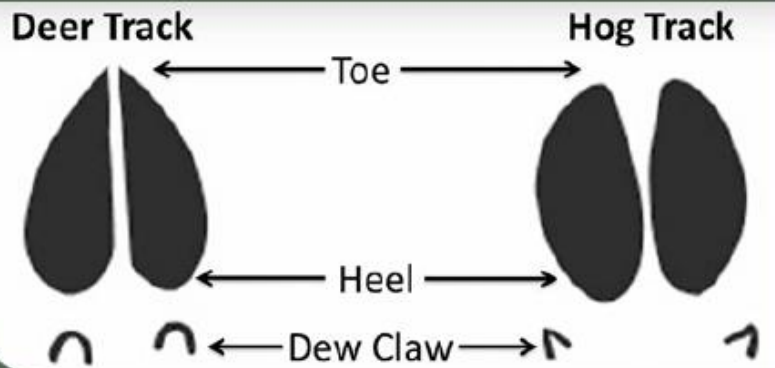
Scat: Feral pig scat is tubular and may look like the droppings of a horse or domestic dog. Shape and consistency can be highly variable, but vegetation can often be found in the scat.

Rooting: When feeding, pigs disturb the ground by digging and rooting with their snouts for insects, roots, tubers, and water. A single pig can overturn an acre or more of vegetation in a night.

Wallows: In moist areas near streams and creeks, pigs may create wallow where they will lay in the mud and water to cool off.

Deer or Hog?

Learn to spot the differences between the two tracks.



track



Photo courtesy San Diego Natural History Museum

scat



Photo courtesy San Diego Natural History Museum

rooting



Photoby Gary Reece

wallows



Photo courtesy San Diego Natural History Museum

Scan to Report



HOW TO REPORT

CDFW San Diego Office: askR5@wildlife.ca.gov

San Diego State University: mjennings@sdsu.edu

For more information, call the CDFW office at 858-467-4201.

When reporting, please provide the following information regarding your sighting:

1. Date/time 2. Location (preferably latitude/longitude or UTM coordinates) 3. Type of sign and extent observed 4. Photographs 5. Estimation of the age of the sign

<https://arcg.is/0nrvKm>

San Diego Pig Sighting Reports

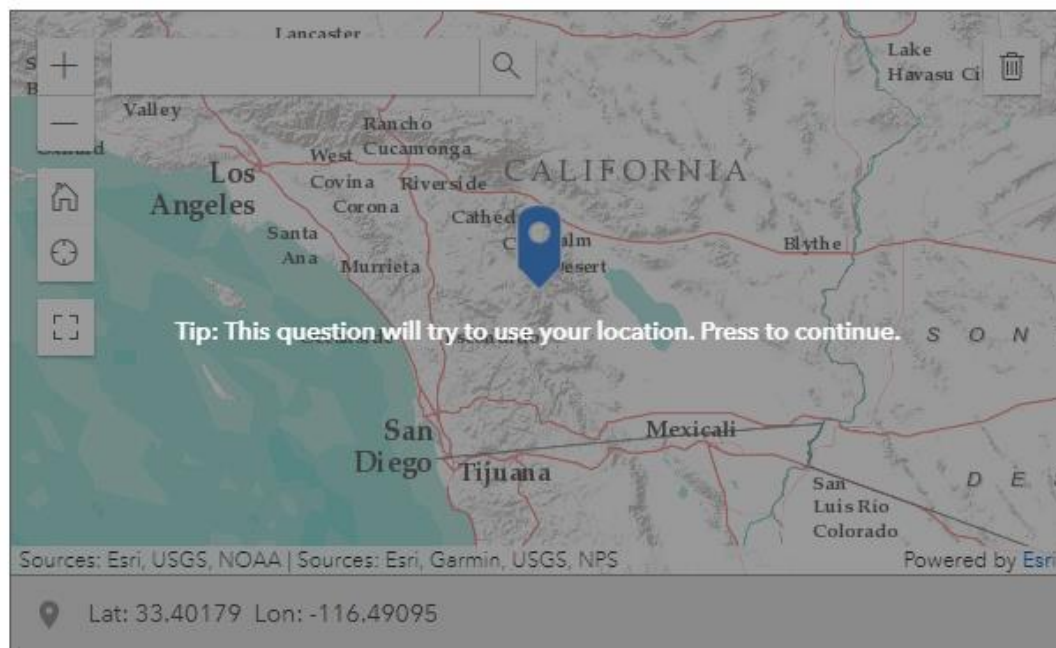
The San Diego Intergovernmental Feral Pig Working Group would like to leverage the boots on the ground in the County to help us track and monitor the success of the feral pig eradication program in San Diego. This form is intended to facilitate reporting and through the network of land managers in the region for early detection and rapid response if pigs are sighted in San Diego County.

Sighting observation date/time*

 m/d/yyyy

 hh:mm

Sighting location*



Observation type*

Check all that apply

☐

Pig

☐

Track

☐

Scat

☐

Rooting

☐

Wallow

☐

Other

Confidence in species identification

Rate how certain you are that the sign recorded was a pig

☐

High confidence

☐

Medium confidence

☐

Low confidence

If pigs were observed, how many?

12³

Photo documentation

Please provide a photo of the sign you observed, if at all possible

Press here to choose image file. (<10MB)



Observer*

Please enter your contact information



Any additional details to note?

Submit