

Published on *East County Magazine* (<http://www.eastcountymagazine.org>)

[Home](#) > BACK COUNTRY LAND TRUST ACQUIRES LA POSTA PROPERTIES FOR PRESERVATION

BACK COUNTRY LAND TRUST ACQUIRES LA POSTA PROPERTIES FOR PRESERVATION

[Share / Save](#) [f](#) [t](#) [p](#)

[April 2016 Articles](#)

[Back Country Land Trust](#) [San Diego Mountain Ranch](#) [Clover Flat](#)



East County News Service

Photo: Clover Flat

April 27, 2016 (San Diego's East County) -- Back Country Land Trust closed on March 31st on the conservation of the abutting 982-acre San Diego Mountain Ranch and the 764-acre Clover Flat properties in La Posta. The transaction is valued at \$6,000,000; funded by SANDAG, the US NAVY, US Fish & Wildlife Service, the Trust for Public Land, the California Wildlife Conservation Board, and

BCLT. Along with the land came approximately \$120,000 in funds for remediation plus management endowment funding, says George Barnett, Vice President of BCLT.

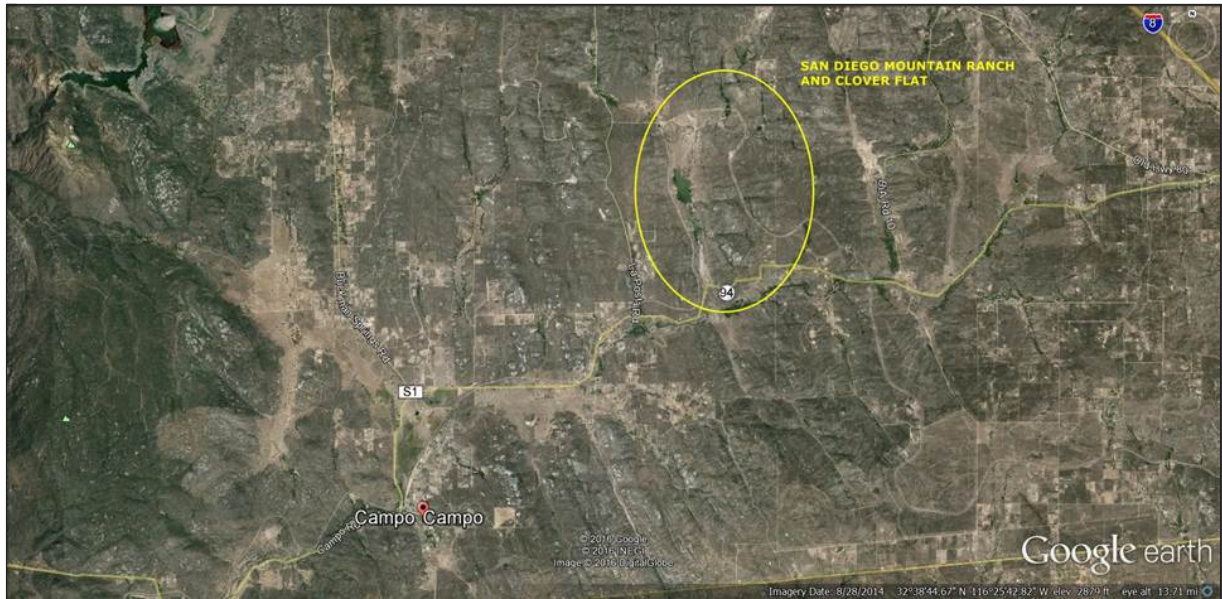
As of the end of last month, and including the 230-acre Wright's Field Environmental Preserve in Alpine and open for the enjoyment of the public, BCLT owns and/or manages nearly 4,500 acres in east/south San Diego county; with over 1,900 acres in the La Posta area, and 2,100 acres in Long Potrero valley. That latter total includes the management of 1,200-acres of state/federal designated Sunrise Powerlink mitigation lands in Long Potrero; which property is owned by SDG&E.

As of April, BCLT has \$13,755,000 in land assets, per Barnett.

In addition to the credentialing of BCLT by the California Department of Fish & Wildlife authorizing BCLT as a qualified owner and manager of official mitigation lands in San Diego county, BCLT is a contracted partner in the US Navy's *Encroachment Protection Agreement* supporting the US Department of Defense's *Readiness and Environmental Protection Integration (REPI)* Program in San Diego county.

The several restricted use permits attached to the properties' deeds permit BCLT to carry-on traditional agricultural operations from bee-keeping to ranching. BCLT's intent is to demonstrate the compatibility of rural agricultural lifestyles with environmental conservation and land stewardship.

The properties are in the northeast quadrant of the intersection of La Posta Road and Highway 94 – a few miles east of Cameron Corners.



Powered by [Drupal](#)

Source URL (modified on 04/29/2016 - 08:06): <http://www.eastcountymagazine.org/back-country-land-trust-acquires-la-posta-properties-preservation>