

Management Strategic Plan



Strategic Plans

Management

Monitoring

Preserve
mgt. plan

Preserve
mgt. plan

Preserve
mgt. plan

Multi-taxa
database

Connectivity

Species

Natural Communities

Stressor



SD Strategic Plans

- Monitoring
 - Species
 - Regan et. al
 - Protocol testing
 - Plants (USGS, City of SD, SANDAG)
 - Animals (FWS, SDMMMP, USGS)
 - Natural Communities- IEMM
 - Stressors/threats
 - Connectivity (CMSP)- implementing
 - CAGN, CACW, mtn. lion, badger



Management Strategic Plan

Providing the foundation for Five Year Horizon
Funding Program for Preserve Management



Management Strategic Plan

Purpose-

- Science based management priorities
- Identify measurable objectives- evaluate progress towards achieving identified goals
- Rationale for management actions
- Provide cost/benefit context for management decisions/actions



Management Plan Template

2005 Regional Preserve Implementation Assessment (Needs Assessment)

- V.A.1. Develop guidelines for preparing subarea framework and area-specific management plans.
- V.A.2. Develop and standardize preserve level monitoring guidelines to direct area-specific management directives.



Management Plan Template- IEMM

- Goals and objectives for the preserve
- Conceptual models to identify management actions to achieve objectives
- Threats/stressor affecting the preserve
- Management actions/BMPs
- Monitoring on the preserve level (what and how)
- Implementing adaptive management on the preserve
- Examples drawn from local preserves

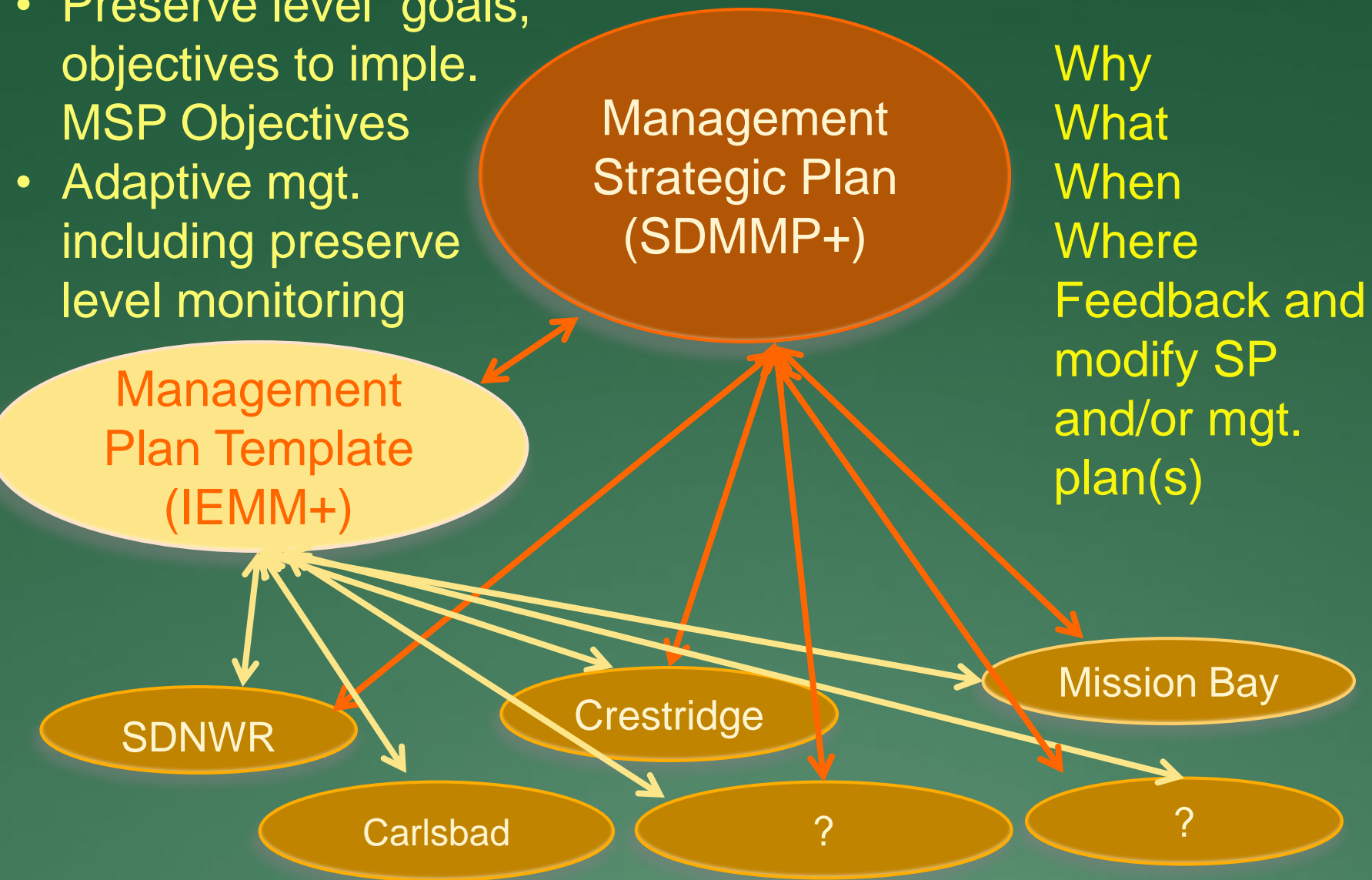
Management Strategic Plan- SDMMMP

Setting priorities

- Species
 - Management priorities
- Natural Community
 - Management priorities
- Stressors/threats
 - Spatial and temporal issues
 - Multiple species benefits
 - Management options- feasibility

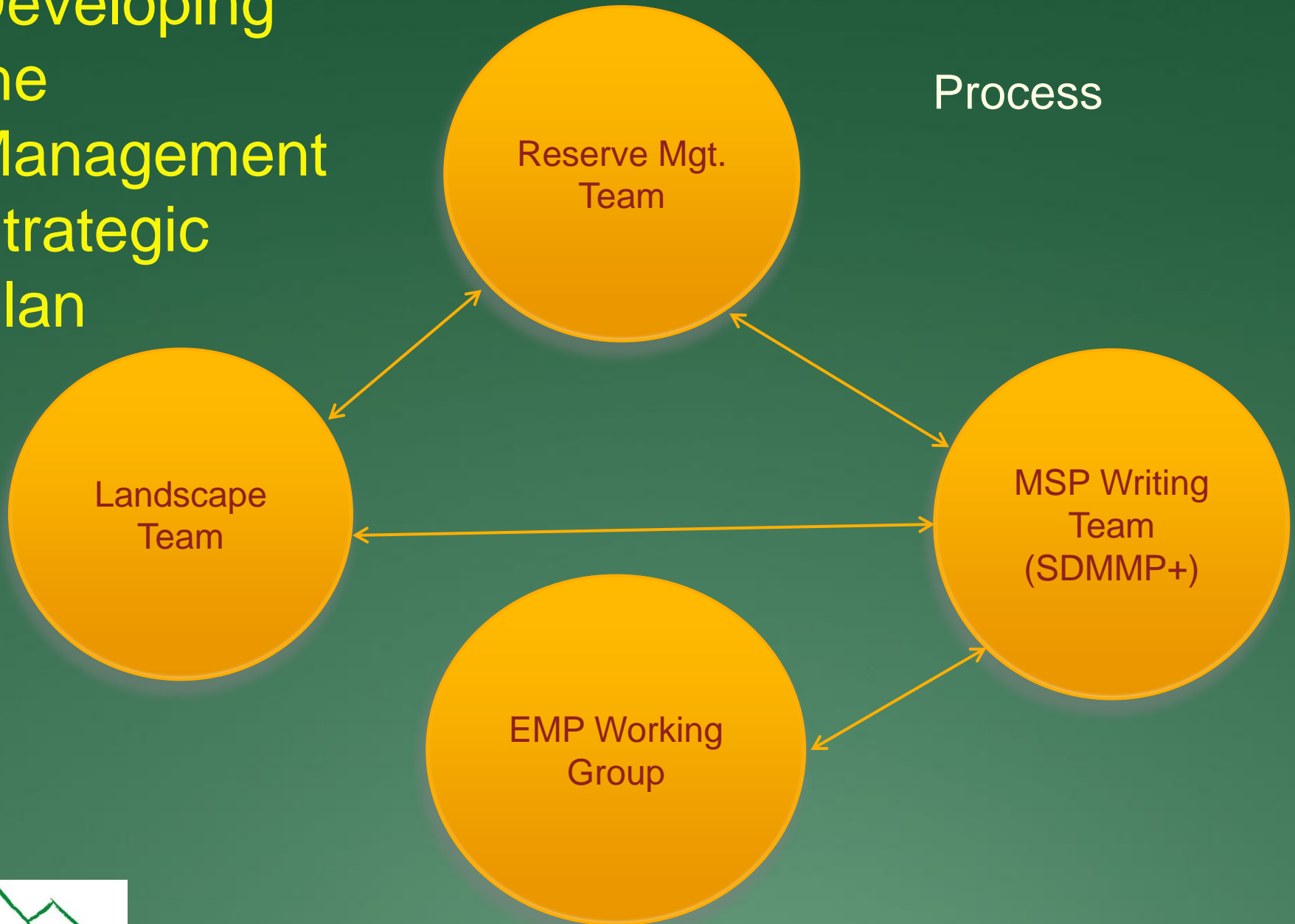


- Preserve level goals, objectives to imple. MSP Objectives
- Adaptive mgt. including preserve level monitoring



Developing the Management Strategic Plan

Process



Management Strategic Plan

Why

- Change in species
 - Population
 - Occupancy
- Change in stressor
 - Exotic species
 - Human impact
 - Change in native species

What

- Adaptive Mgt.
 - Exotic species
 - Trap
 - Spray
 - Access control
- Implement BMP
 - Fencing

When

- Temporal- fixed or flexible
- Triggers
 - Monitoring data
- Moving away from “because”

Where

- Spatial issue
- Range wide
 - Watershed
 - Population
 - Natural Community
 - Plan area

Creating Subsets

- Geography-
 - Land Management Groups
 - Watersheds
- Natural Community
- Species at greatest risk
- Stressors/Threats

Management Strategic Plan

Stressors

- Scale and intensity
 - Spatial
 - Temporal
- Management options
- (utilize conceptual models)

Species

- Keeping extant species extant
- Species at risk
- Covered
- Narrow endemics
- Keystone species
- Imminent listing

Geography

- Watersheds
- Preserve Management Groups
 - South County
 - North County
 - Coastal
 - Other

Natural Community

- Rare
- Under greatest threat
- Response to tested management actions
- Response unknown

Stressors, Natural Community and Temporal Scale of Effect

	Recreation				Exotic Species	Wildfire		Roads	
	Hiking	Trail Riding	Biking	Dogs with hikers		Frequency	Intensity	Fragmentation	Unknown
CSS	ST	ST	MT	ST	LT	MT	LT	LT	MT
MSS	ST	ST	MT	ST	LT	MT	LT	LT	LT
Grasslands	ST	ST	ST	LT	LT	ST	ST	LT	ST
Riparian	ST	ST	ST	ST	LT	MT	MT	LT	ST
Chaparral	ST	ST	MT	ST	MT	ST	MT	LT	MT

ST = short term, less than 5 years

MT = moderate term, 5 to 10 years

LT = long term, more than 10 years

Dahlem Work Group 1 Product
see at SDMMP.com



Stressors, Natural Community and Spatial scale of effect

	Recreation				Exotic Species	Wildfire		Roads	
	Hiking	Trail Riding	Biking	Dogs with hikers		Frequency	Intensity	Fragmentation	Unknown
CSS	P/PS	P/PS	P/PS	P/PS	P	PS	PS	PS	R
MSS	P	P	P	P	P	PS	PS	PS	R
Grasslands	P/PS	P/PS	P	P/PS	P	PS	PS	PS	R
Riparian	PS	PS	P	P	PS	PS/R	R	PS/R	PS/R
Chaparral	PS	PS	PS	PS	P	PS	PS	PS/R	PS/R

P = Preserve
PS = Preserve System
R = Regional

Dahlem Work Group 1 Product
 see at SDMMP.com



Stressors, Natural Community and Relative Importance

	Recreation				Exotic Species	Wildfire		Roads	
	Hiking	Trail Riding	Biking	Dogs with hikers		Frequency	Intensity	Fragmentation	Road Mortality
CSS	I	M	M	M	M	H	H	H	M
MSS	I	M	M	M	M	H	H	H	M
Grasslands	M	M	I	M	M	I	I	M	I
Riparian	M	M	I	M	I	I	H	M	I
Chaparral	I	I	I	I	I	M	H	I	I

I = Important

M = Moderately Important

H = Highly Important

Dahlem Work Group 1 Product
see at SDMMP.com



Management Plan Development - Using the Mgt. Strategic Plan and Mgt. Plan Template

Preserve A- focusing the mgt. plan
acres- 3,000

sensitive habitat- riparian

location- 5 miles east of coast

special features- deep ponds

stressors identified

exotic species (bull frog,
bass, crayfish)

multiple road crossings

trail access along river- .1

miles from public access

Mgt. strategic plan- WPT focal area

No

No WPT management action-

Preserve Mgt. plan

Preserve B- focusing the mgt. plan
acres- 3,000

sensitive habitat- riparian

location- 25 miles east of coast

special features- deep ponds

stressors identified

exotic species (bull frog,
bass, crayfish)

2 miles to nearest road

3 miles from public access

Mgt. strategic plan- WPT focal area-

Yes

Focal Surveys for WPT (MPT)

Identified as potential WPT

enhance/reintroduction site

Mgt. Action

Aquatic species control (MPT-BMP)

