

## **13.0 URBAN DEVELOPMENT**

### **13.1 OVERVIEW**

Urban development can have a number of impacts on preserves in the MSPA, including artificial lighting, nitrogen deposition, and various forms of pollution. Human disturbances tend to occur closer to urban areas because of the ease of access and proximity to roads. The urban edge was calculated as any area within 250 meters of an urban land use. In the MSPA, Conserved Lands with a higher land area within the urban edge may be at a higher risk of impact from urban development.

#### **13.1.1 Edge Effects**

Urban environments produce a variety of threats to native species. Human disturbance on preserves is typically higher closer to urban areas due to the demand for recreational opportunities, ease of access, and proximity of roads to preserves. These all provide opportunities for authorized and unauthorized use of preserves. Humans can directly damage species through trampling/killing species or their habitat, intentional and unintentional introductions of exotic and invasive species, road kill, increased fire frequency, nonpoint source pollution, and disruption of nighttime movements due to urban and suburban light increasing the ambient light levels in preserves. The percent area of a Conserved Land complex within the urban edge (250 meters) was calculated for all Conserved Land complexes (Table V2B.13-1; Figure V2B.13-1). MUs with Conserved Lands with very high levels of urban-wild interface (> 40%) include MUs 1, 2, 6, and 7. The urban-wild interface area on Conserved Lands in MUs 3, 4, 5, and 8 is much lower, although potential future development in the eastern part of the MSPA would increase the threat/stress from urban sources. This potential increase in urban edge will be tempered by the larger patch sizes of lands conserved in the eastern MUs.

#### **13.1.2 Artificial Lighting**

Light from urban areas can disrupt nighttime activities of many animals (Perry and Fisher 2006). It can allow predators to more easily see prey, such as nocturnal reptile species and small mammals, causing significant declines in their populations. Nighttime light pollution is the strongest near urban areas, including roads. Near wetlands, artificial light can disrupt nocturnal activities, such as croaking by frogs and toads, which can interfere with reproduction (International Dark-Sky

Association 2016). Additionally, many insects are drawn to artificial light, which often has fatal consequences. A decline in insect populations can negatively impact all species that rely on insects for food or pollination.

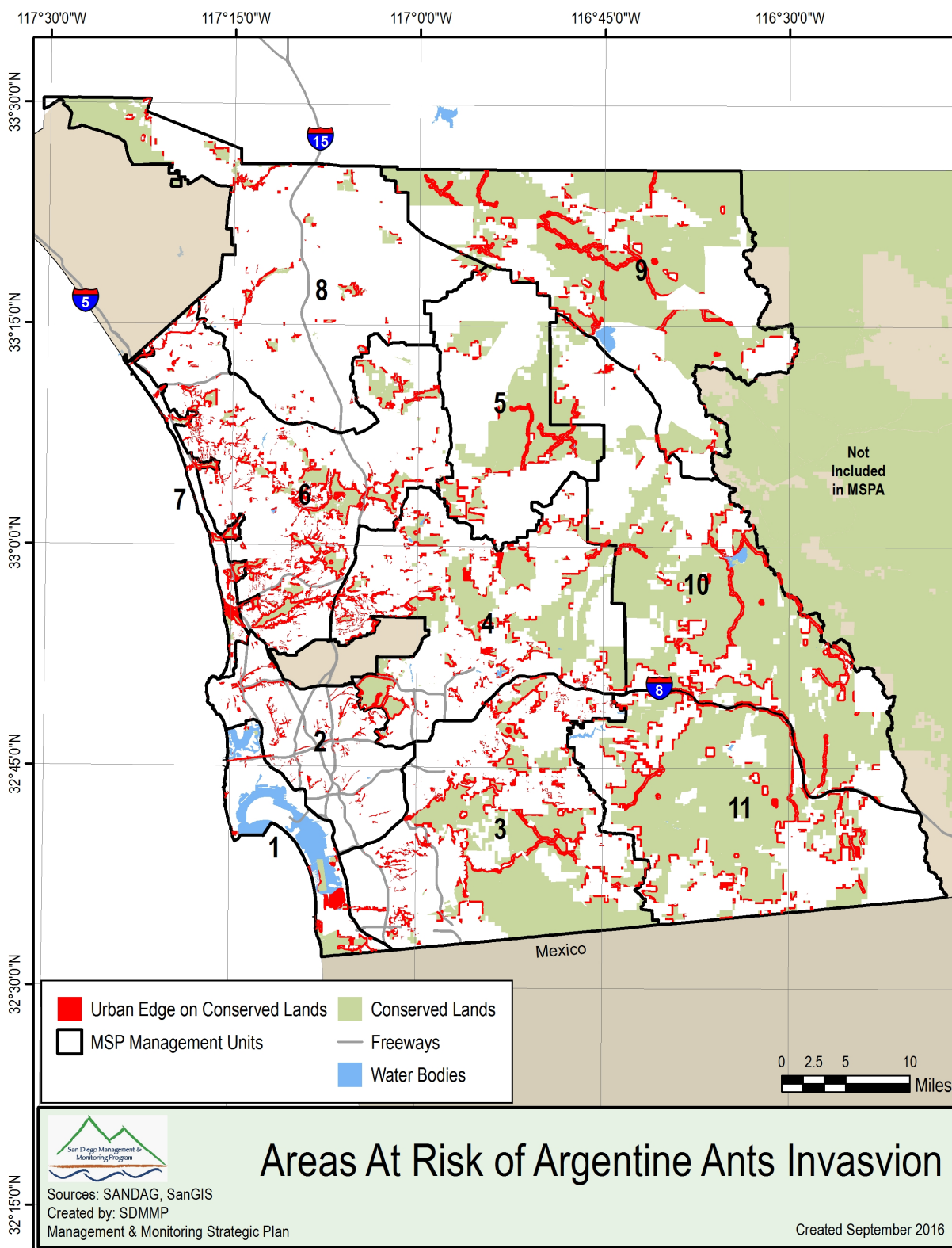
The World Atlas of Artificial Sky Brightness estimates the artificial light intensity based on satellite images and models based on the earth's curvature, topography, and measured locations (Cinzano and Elvidge 2004; Cinzano et al. 2012). The model is based on the Bortle light scale, which ranges from 1 (no light pollution) to 9 (entire sky is greyish or brighter). San Diego County has high levels of light pollution along the coast and city centers with less pollution in the eastern portions and areas blocked by mountains (Figure V2B.13-2). Some species (e.g., amphibians, reptiles, and birds) that occur in high light areas are likely being adversely impacted by night lighting level, especially preserves in MUs 1, 2, 4, 6, and 7.

**Table V2B.13-1. Percent of area of Conserved Lands with urban edge.**

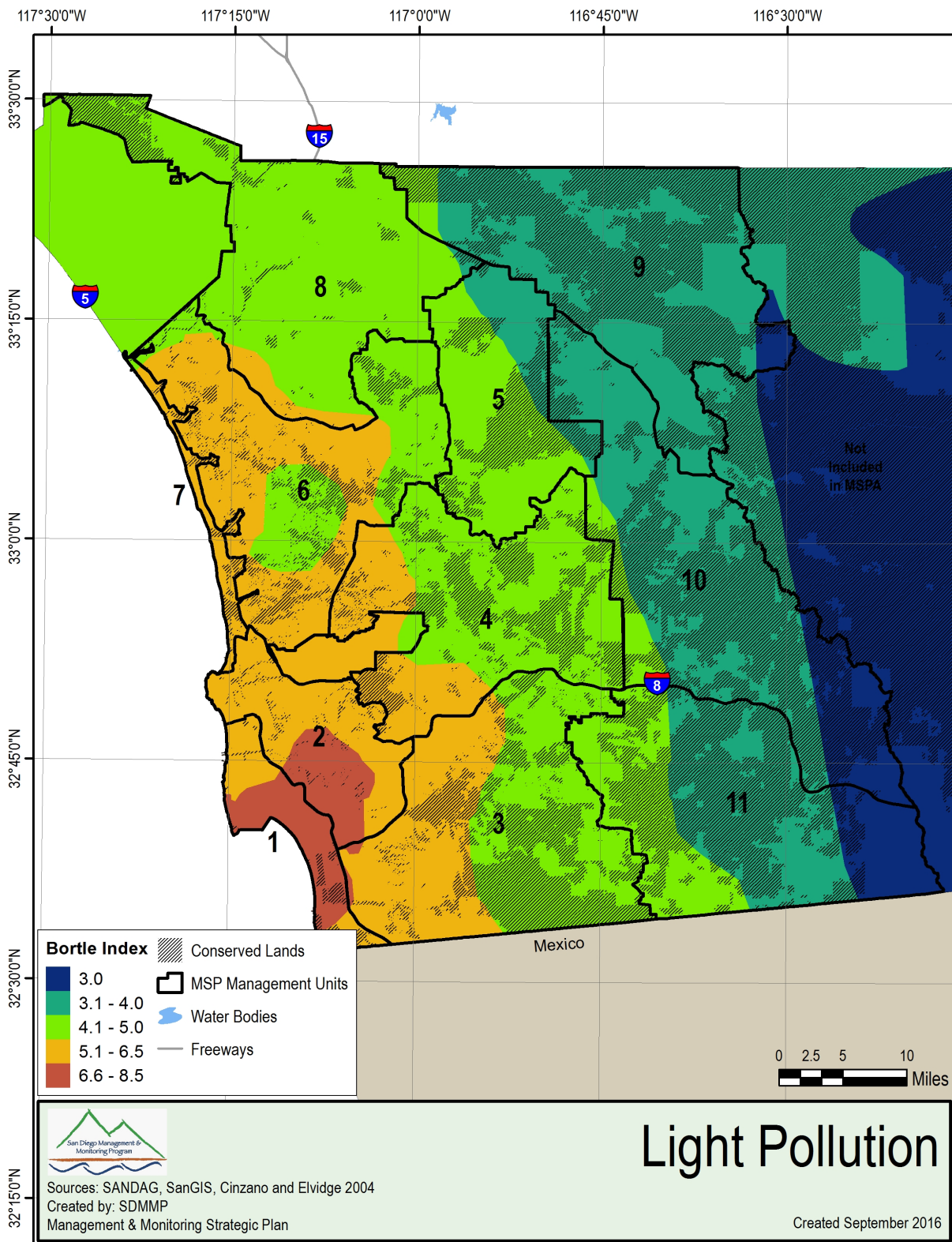
MU	Acres of Conserved Land in Urban Edge	Total Acres of Conserved Land	Percent of Conserved Land in Urban Edge
1	3,742.4	7,245.6	51.7
2	5,520.7	6,736.2	82.0
3	20,388.5	85,122.9	24.0
4	17,484.5	58,467.2	29.9
5	6,612.5	40,129.2	16.5
6	27,630.5	42,946.3	64.3
7	3,029.5	3,817.8	79.4
8	5,964.3	23,881.6	25.0
9	17,571.1	137,926.2	12.7
10	18,759.7	141,868.2	13.2
11	17,262.3	115,258.8	15.0

### 13.1.3 Nitrogen Deposition

Nitrogen deposition is defined as reactive nitrogen originating from air pollution caused by fossil fuel combustion and that moves from the atmosphere to the ground as nitrate and ammonium (Simkin et al. 2016). Increasing levels of soil



**Figure V2B.13-1. Conserved Lands within 250 meters of an urban edge that are at risk of invasion by Argentine ants.**



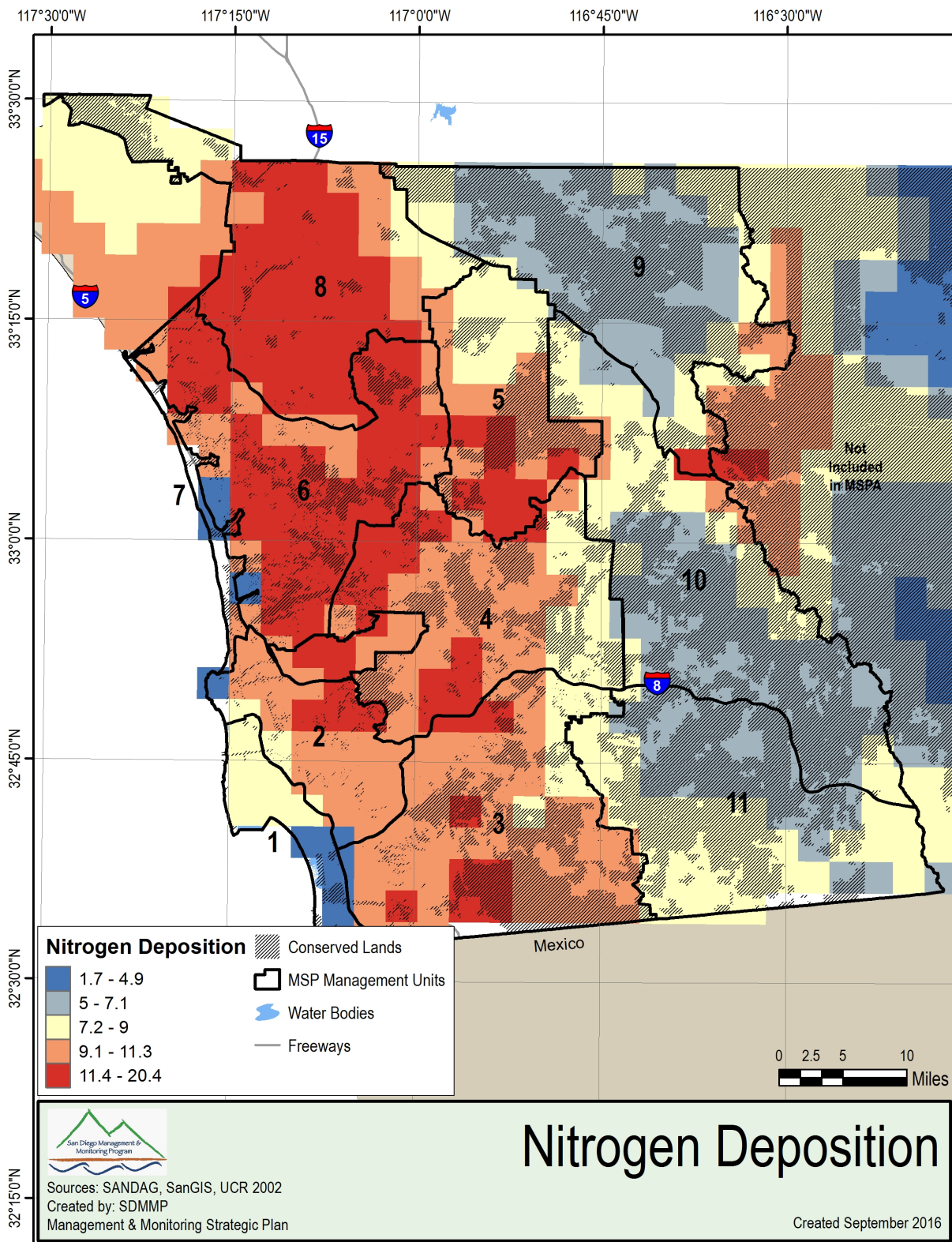
**Figure V2B.13-2. Light pollution based on satellite images, topography, and earth curvature (Cinzano and Elvidge 2004).**



nitrogen also arise from agricultural runoff (Perry et al. 2010). Global rates of nitrogen deposition have tripled in the last century (Simkin et al. 2016). This nutrient enrichment of the environment has led to worldwide declines in local plant species diversity, particularly the loss of rare plant species (Suding et al. 2005). Fifty percent of global biodiversity hot spots are subjected to nitrogen deposition levels of 15-20 kg N ha/yr, which threatens areas of high plant diversity and endemism (Phoenix et al. 2006). Increased soil nitrogen increases the invasion of nonnative plants into native plant communities (Perry et al. 2010). In the western United States, atmospheric nitrogen deposition is altering plant and microbial communities by changing species composition, and is associated with increased fire frequencies and sensitive species habitat degradation (Fenn et al. 2003).

In southern California, atmospheric nitrogen deposition is leading to the invasion of nonnative grasses into native grasslands, forblands, coastal sage scrub, and chaparral and facilitating vegetation type conversion to nonnative grassland (Weiss 1999; Fenn et al. 2003; Talluto and Suding 2007; Cox et al. 2014; Kimball et al. 2014). Critical loads of nitrogen are those levels that facilitate invasion of nonnative grasses, with higher levels leading to type conversion to nonnative grassland (Fenn et al. 2010). These critical loads are: 7.8 to 10 kg N ha/yr in coastal sage scrub; 10-14 kg N ha/yr in chaparral; and 6-7.5 kg N ha/yr in grasslands. In California, 54% of coastal sage scrub, 53% of chaparral, and 44% of grassland vegetation communities exceed these critical loads of nitrogen (Fenn et al. 2010). Nitrogen deposition can act in concert with altered fire regimes and drought to accelerate the invasion process (Talluto and Suding 2007; Kimball et al. 2014). The process of coastal sage scrub type conversion is often facilitated by frequent fires, although critical loads of 11 kg N ha/yr or more are associated with landscape-scale type conversion over time in the absence of fire (Cox et al. 2014). Extreme drought may also slow natural succession and increase potential for type conversion of coastal sage scrub to nonnative grassland in nitrogen rich systems (Kimball et al. 2014). Elevated nitrogen deposition levels are impacting sensitive plant and animal species through degradation and type conversion of their habitats to nonnative grasslands (Weiss 1999; Fenn et al. 2003).

Estimates of nitrogen deposition were created by the University of California, Riverside based on remote sensing images and 13 atmospheric sensors in the San Bernardino Mountains (Bytnerowicz et al. 2015). Figure V2B.13-3 illustrates the modeled annual deposition of nitrogen in the MSPA (Tonneson et al. 2007). With the exception of small areas of the coast, the MSPA falls within nitrogen loads that



**Figure V2B.13-3. Nitrogen deposition in kg ha<sup>-1</sup> yr<sup>-1</sup> (Fenn et al. 2009).**

exceed 5 kg N ha/yr. Coastal valleys and foothills are dominated by nitrogen deposition loads of 9-20 kg N ha/yr, far exceeding levels associated with conversion of coastal sage scrub, grassland and chaparral to nonnative grassland over time.

#### **13.1.4 Pollution**

Various forms of pollution exist near urban development, which can include trash and other dry litter, chemical pollution, and noise pollution. In urban areas, trash can easily be transported by stormwater runoff. This could be material illegally dumped at preserves, or material that is blown or washed in from neighboring urban areas. Additional sources of pollution in the preserves can come from recreational users, ORVs, and target shooting.

Preserves in the MSPA that allow recreation, especially heavily trafficked ones, may accumulate large amounts of trash. It is important to provide waste and recycling bins at the trailheads to collect any trash that may otherwise find its way into the preserve. Household trash, such as plastic bags, cups, bottles, and containers, can be hazardous to any wildlife that ingests the plastic or gets caught and strangled. Homeless encampments are another source of pollution in preserves and can have detrimental effects on wildlife through increased refuse and raw sewage disposal (AMEC Earth & Environmental Inc. et al. 2003). The large volume of refuse from the living areas can attract black rats, which contribute to the decline of native rat populations.

ORVs can cause adverse effects to preserves due to air pollution from automotive exhaust and the creation of dust, as well as the illegal dumping of trash (Dillingham and Miner 2009). On preserves where target shooting—whether legal or illegal—exists, spent ammunition and the abandoned targets can introduce harmful pollutants to the wildland areas. When irresponsible shooters use electronics as targets, they can leave behind cadmium, arsenic, selenium, and mercury (Tuell 2016). These heavy metals persist in the soil and can contaminate surface or subsurface water. While legislation has Californians moving away from lead bullets, they are still in use. Numerous studies have documented the adverse effects of lead exposure to waterbirds and scavenger species, like eagles and hawks, as well as reptiles and small mammals near shooting ranges (Live Science Staff 2008). Lead poisoning causes behavioral, physiological, and biochemical effects, and often death. Spent ammunition can also slowly dissolve and enter the groundwater, negatively impacting plants, animals, and even people if it enters a water body or is taken up by plants used for consumption.

### **13.1.5 Noise**

Anthropogenic noise, especially near urban areas, differs from the pitch and amplitude in most natural habitats (Francis et al. 2009). For avian species, noise alone can reduce nesting species richness and alter community composition. However, noise can also disrupt predator-prey relationships, leading to a higher reproductive success for birds in noisy areas. "Chronic and frequent noise interferes with animal's abilities to detect important sounds, whereas intermittent and unpredictable noise is often perceived as a threat" (Francis and Barber 2013). Several impacts of noise exposure on wildlife have yet to be extensively studied, including behavioral and physiological responses. Future research should focus on these areas to help identify practical noise limits that can inform policy and regulation.

## **13.2 URBAN DEVELOPMENT IN THE MSPA**

The percent area of a Conserved Land complex within the urban edge (250 meters) was calculated for all Conserved Land complexes (Table V2B.13-1; Figure V2B.13-1). MUs with Conserved Lands with very high levels of urban-wild interface (>40%) include MUs 1, 2, 6, and 7. The urban-wild interface area on Conserved Lands in MUs 9, 10, 11, and 5 is much lower although potential future development in the eastern part of the MSPA would increase the threat/stress from urban development. This potential increase in urban edge will be tempered by the larger patch sizes of lands conserved in the eastern MUs.

## **13.3 RESULTS OF URBAN DEVELOPMENT STUDIES IN THE MSPA**

There are no known studies of urban development that have been conducted in the MSPA.

## **13.4 MANAGEMENT AND MONITORING APPROACH**

The goal for managing the effects of urban development in the preserves is to better understand and reduce the impacts on Conserved Lands where urban development is reducing the population levels and/or viability of MSP species populations. The approach for managing urban development effects in the preserves is divided into 2 parts: general and species-specific. General objectives focus on supporting land managers in preventing or cleaning up trash across the MSPA. Species-specific objectives have been developed for those MSP species identified as at highest risk from loss due to urban development near the



preserves, and for which specialized objectives are required to ensure their persistence in the MSPA.

### **13.4.1 General Approach Objectives**

Managing light and noise pollution and nitrogen deposition at the regional level is outside the scope of the MSP Roadmap and therefore no goals and objectives have been developed. Management of light pollution at the preserve level where it impacts MSP species should be taken into consideration by preserve managers where implementable management actions are possible. The general approach for managing urban development effects in the preserves is focused on preventing and cleaning up trash collection sites, as described below. For the most up-to-date goals, objectives, and actions, go to the MSP Portal Urban Development summary page: [http://portal.sdmmp.com/view\\_threat.php?threatid=TID\\_20160304\\_1458](http://portal.sdmmp.com/view_threat.php?threatid=TID_20160304_1458).

Management for illegal dumping should focus on preventing future dump sites and cleaning up current trash problems. This could include supporting land managers on enforcement, signage or fencing, public outreach, or cleanup projects.

### **13.4.2 Species-specific Approach Objectives**

Descriptions of urban development management approach and rationale as well as goals, objectives, and actions for at-risk MSP species are presented in the corresponding species sections. Links to species-specific urban development objectives are provided in Table V2B.13-2. Use the MSP Portal for the most updated list of species with Urban Development objectives.

**Table V2B.13-2. MSP plant and animal species with specific urban development management and monitoring objectives.**

Scientific Name	Common Name	Management Category	Summary Page Link
<b>Plants</b>			
<i>Acanthomintha ilicifolia</i>	San Diego thorn-mint	SO	<a href="https://portal.sdmmp.com/view_species.php?taxaid=32426">https://portal.sdmmp.com/view_species.php?taxaid=32426</a>
<i>Acmispon prostratus</i>	Nuttall's acmispon	SO	<a href="https://portal.sdmmp.com/view_species.php?taxaid=820047">https://portal.sdmmp.com/view_species.php?taxaid=820047</a>
<i>Ambrosia pumila</i>	San Diego ambrosia	SO	<a href="https://portal.sdmmp.com/view_species.php?taxaid=36517">https://portal.sdmmp.com/view_species.php?taxaid=36517</a>
<i>Aphanisma blitoides</i>	Aphanisma	SL	<a href="https://portal.sdmmp.com/view_species.php?taxaid=20679">https://portal.sdmmp.com/view_species.php?taxaid=20679</a>
<i>Atriplex coulteri</i>	Coulter's saltbush	VF	<a href="https://portal.sdmmp.com/view_species.php?taxaid=20523">https://portal.sdmmp.com/view_species.php?taxaid=20523</a>
<i>Atriplex parishii</i>	Parish brittlescale	VF	<a href="https://portal.sdmmp.com/view_species.php?taxaid=20554">https://portal.sdmmp.com/view_species.php?taxaid=20554</a>
<i>Baccharis vanessae</i>	Encinitas baccharis	SO	<a href="https://portal.sdmmp.com/view_species.php?taxaid=183764">https://portal.sdmmp.com/view_species.php?taxaid=183764</a>
<i>Bloomeria clevelandii</i>	San Diego goldenstar	SS	<a href="https://portal.sdmmp.com/view_species.php?taxaid=509575">https://portal.sdmmp.com/view_species.php?taxaid=509575</a>
<i>Brodiaea filifolia</i>	Thread-leaved brodiaea	SS	<a href="https://portal.sdmmp.com/view_species.php?taxaid=42806">https://portal.sdmmp.com/view_species.php?taxaid=42806</a>
<i>Brodiaea orcuttii</i>	Orcutt's brodiaea	SO	<a href="https://portal.sdmmp.com/view_species.php?taxaid=42815">https://portal.sdmmp.com/view_species.php?taxaid=42815</a>
<i>Centromadia parryi</i> ssp. <i>australis</i>	Southern tarplant	VF	<a href="https://portal.sdmmp.com/view_species.php?taxaid=780715">https://portal.sdmmp.com/view_species.php?taxaid=780715</a>
<i>Chloropyron maritimum</i> ssp. <i>maritimum</i>	Salt marsh bird's-beak	SL	<a href="https://portal.sdmmp.com/view_species.php?taxaid=834234">https://portal.sdmmp.com/view_species.php?taxaid=834234</a>

Scientific Name	Common Name	Management Category	Summary Page Link
Chorizanthe orcuttiana	Orcutt's spineflower	SL	<a href="https://portal.sdmmp.com/view_species.php?taxaid=21019">https://portal.sdmmp.com/view_species.php?taxaid=21019</a>
Clinopodium chandleri	San Miguel savory	SL	<a href="https://portal.sdmmp.com/view_species.php?taxaid=565077">https://portal.sdmmp.com/view_species.php?taxaid=565077</a>
Cylindropuntia californica var. californica	Snake cholla	VF	<a href="https://portal.sdmmp.com/view_species.php?taxaid=913470">https://portal.sdmmp.com/view_species.php?taxaid=913470</a>
Deinandra conjugens	Otay tarplant	SS	<a href="https://portal.sdmmp.com/view_species.php?taxaid=780273">https://portal.sdmmp.com/view_species.php?taxaid=780273</a>
Dicranostegia orcuttiana	Orcutt's bird's-beak	SL	<a href="https://portal.sdmmp.com/view_species.php?taxaid=834156">https://portal.sdmmp.com/view_species.php?taxaid=834156</a>
Dudleya blochmaniae	Blochman's dudleya	SL	<a href="https://portal.sdmmp.com/view_species.php?taxaid=502165">https://portal.sdmmp.com/view_species.php?taxaid=502165</a>
Dudleya brevifolia	Short-leaved dudleya	SL	<a href="https://portal.sdmmp.com/view_species.php?taxaid=502166">https://portal.sdmmp.com/view_species.php?taxaid=502166</a>
Ericameria palmeri ssp. palmeri	Palmer's goldenbush	VF	<a href="https://portal.sdmmp.com/view_species.php?taxaid=527914">https://portal.sdmmp.com/view_species.php?taxaid=527914</a>
Eryngium aristulatum var. parishii	San Diego button-celery	VF	<a href="https://portal.sdmmp.com/view_species.php?taxaid=528066">https://portal.sdmmp.com/view_species.php?taxaid=528066</a>
Erysimum ammophilum	Coast wallflower	SL	<a href="https://portal.sdmmp.com/view_species.php?taxaid=22928">https://portal.sdmmp.com/view_species.php?taxaid=22928</a>
Euphorbia misera	Cliff spurge	VF	<a href="https://portal.sdmmp.com/view_species.php?taxaid=28104">https://portal.sdmmp.com/view_species.php?taxaid=28104</a>
Ferocactus viridescens	San Diego barrel cactus	VF	<a href="https://portal.sdmmp.com/view_species.php?taxaid=19801">https://portal.sdmmp.com/view_species.php?taxaid=19801</a>
Hazardia orcuttii	Orcutt's hazardia	SL	<a href="https://portal.sdmmp.com/view_species.php?taxaid=502882">https://portal.sdmmp.com/view_species.php?taxaid=502882</a>
Monardella viminea	Willow monardella	SL	<a href="https://portal.sdmmp.com/view_species.php?taxaid=833060">https://portal.sdmmp.com/view_species.php?taxaid=833060</a>

Scientific Name	Common Name	Management Category	Summary Page Link
Navarretia fossalis	Spreading navarretia	VF	<a href="https://portal.sdmmp.com/view_species.php?taxaid=31328">https://portal.sdmmp.com/view_species.php?taxaid=31328</a>
Orcuttia californica	California orcutt grass	SL	<a href="https://portal.sdmmp.com/view_species.php?taxaid=41970">https://portal.sdmmp.com/view_species.php?taxaid=41970</a>
Pogogyne abramsii	San Diego mesa mint	VF	<a href="https://portal.sdmmp.com/view_species.php?taxaid=32639">https://portal.sdmmp.com/view_species.php?taxaid=32639</a>
Pogogyne nudiuscula	Otay mesa mint	SL	<a href="https://portal.sdmmp.com/view_species.php?taxaid=32643">https://portal.sdmmp.com/view_species.php?taxaid=32643</a>
Quercus engelmannii	Engelmann Oak	VF	<a href="https://portal.sdmmp.com/view_species.php?taxaid=19329">https://portal.sdmmp.com/view_species.php?taxaid=19329</a>
Tetracoccus dioicus	Parry's tetracoccus	SS	<a href="https://portal.sdmmp.com/view_species.php?taxaid=28420">https://portal.sdmmp.com/view_species.php?taxaid=28420</a>
<b>Invertebrates</b>			
Euphydryas editha quino	Quino checkerspot butterfly	SL	<a href="https://portal.sdmmp.com/view_species.php?taxaid=779299">https://portal.sdmmp.com/view_species.php?taxaid=779299</a>
Euphyes vestris harbisoni	Harbison's dunn skipper	SL	<a href="https://portal.sdmmp.com/view_species.php?taxaid=707282">https://portal.sdmmp.com/view_species.php?taxaid=707282</a>
Lycaena hermes	Hermes copper	SL	<a href="https://portal.sdmmp.com/view_species.php?taxaid=777791">https://portal.sdmmp.com/view_species.php?taxaid=777791</a>
Panoquina errans	Wandering skipper	VF	<a href="https://portal.sdmmp.com/view_species.php?taxaid=706557">https://portal.sdmmp.com/view_species.php?taxaid=706557</a>
<b>Amphibians</b>			
Anaxyrus californicus	Arroyo toad	SO	<a href="https://portal.sdmmp.com/view_species.php?taxaid=773514">https://portal.sdmmp.com/view_species.php?taxaid=773514</a>
Spea hammondi	Western spadefoot toad	VF	<a href="https://portal.sdmmp.com/view_species.php?taxaid=206990">https://portal.sdmmp.com/view_species.php?taxaid=206990</a>
<b>Reptiles</b>			
Emys pallida	Southwestern pond turtle	SL	<a href="https://portal.sdmmp.com/view_species.php?taxaid=668677">https://portal.sdmmp.com/view_species.php?taxaid=668677</a>



Scientific Name	Common Name	Management Category	Summary Page Link
<i>Phrynosoma blainvillii</i>	Blainville's horned lizard (Coast horned lizard, San Diego horned lizard)	VF	<a href="https://portal.sdmmp.com/view_species.php?taxaid=208819">https://portal.sdmmp.com/view_species.php?taxaid=208819</a>
<b>Birds</b>			
<i>Agelaius tricolor</i>	Tricolored blackbird	SL	<a href="https://portal.sdmmp.com/view_species.php?taxaid=179060">https://portal.sdmmp.com/view_species.php?taxaid=179060</a>
<i>Aquila chrysaetos canadensis</i>	Golden eagle	SO	<a href="https://portal.sdmmp.com/view_species.php?taxaid=175408">https://portal.sdmmp.com/view_species.php?taxaid=175408</a>
<i>Athene cunicularia hypugaea</i>	Western burrowing owl	SL	<a href="https://portal.sdmmp.com/view_species.php?taxaid=687093">https://portal.sdmmp.com/view_species.php?taxaid=687093</a>
<i>Campylorhynchus brunneicapillus sandiegensis</i>	Coastal cactus wren	SO	<a href="https://portal.sdmmp.com/view_species.php?taxaid=917698">https://portal.sdmmp.com/view_species.php?taxaid=917698</a>
<i>Charadrius nivosus nivosus</i>	Western snowy plover	SL	<a href="https://portal.sdmmp.com/view_species.php?taxaid=824565">https://portal.sdmmp.com/view_species.php?taxaid=824565</a>
<i>Circus cyaneus</i>	Northern harrier	SO	<a href="https://portal.sdmmp.com/view_species.php?taxaid=175430">https://portal.sdmmp.com/view_species.php?taxaid=175430</a>
<i>Empidonax traillii extimus</i>	Southwestern willow flycatcher	SL	<a href="https://portal.sdmmp.com/view_species.php?taxaid=712529">https://portal.sdmmp.com/view_species.php?taxaid=712529</a>
<i>Passerculus sandwichensis beldingi</i>	Belding's savannah sparrow	VF	<a href="https://portal.sdmmp.com/view_species.php?taxaid=179325">https://portal.sdmmp.com/view_species.php?taxaid=179325</a>
<i>Poliophtila californica californica</i>	Coastal California gnatcatcher	VF	<a href="https://portal.sdmmp.com/view_species.php?taxaid=925072">https://portal.sdmmp.com/view_species.php?taxaid=925072</a>

Scientific Name	Common Name	Management Category	Summary Page Link
<i>Rallus obsoletus levipes</i>	Light-footed Ridgway's rail	SO	<a href="https://portal.sdmmp.com/view_species.php?taxaid=176211">https://portal.sdmmp.com/view_species.php?taxaid=176211</a>
<i>Sternula antillarum browni</i>	California least tern	SO	<a href="https://portal.sdmmp.com/view_species.php?taxaid=825084">https://portal.sdmmp.com/view_species.php?taxaid=825084</a>
<i>Vireo bellii pusillus</i>	Least Bell's vireo	SO	<a href="https://portal.sdmmp.com/view_species.php?taxaid=179007">https://portal.sdmmp.com/view_species.php?taxaid=179007</a>
<b>Mammals</b>			
<i>Antrozous pallidus</i>	Pallid bat	SL	<a href="https://portal.sdmmp.com/view_species.php?taxaid=180006">https://portal.sdmmp.com/view_species.php?taxaid=180006</a>
<i>Lepus californicus bennettii</i>	San Diego black-tailed jackrabbit	VF	<a href="https://portal.sdmmp.com/view_species.php?taxaid=900973">https://portal.sdmmp.com/view_species.php?taxaid=900973</a>
<i>Plecotus townsendii pallescens</i>	Townsend's big-eared bat	SO	<a href="https://portal.sdmmp.com/view_species.php?taxaid=203457">https://portal.sdmmp.com/view_species.php?taxaid=203457</a>
<i>Puma concolor</i>	Mountain lion	SL	<a href="https://portal.sdmmp.com/view_species.php?taxaid=552479">https://portal.sdmmp.com/view_species.php?taxaid=552479</a>
<b>Vegetation Communities</b>			
Oak Woodland			<a href="https://portal.sdmmp.com/view_species.php?taxaid=SDMMP_vegcom_10">https://portal.sdmmp.com/view_species.php?taxaid=SDMMP_vegcom_10</a>
Riparian Forest & Scrub			<a href="https://portal.sdmmp.com/view_species.php?taxaid=SDMMP_vegcom_7">https://portal.sdmmp.com/view_species.php?taxaid=SDMMP_vegcom_7</a>
Salt Marsh			<a href="https://portal.sdmmp.com/view_species.php?taxaid=SDMMP_vegcom_6">https://portal.sdmmp.com/view_species.php?taxaid=SDMMP_vegcom_6</a>
Torrey Pine Forest			<a href="https://portal.sdmmp.com/view_species.php?taxaid=SDMMP_vegcom_8">https://portal.sdmmp.com/view_species.php?taxaid=SDMMP_vegcom_8</a>
Vernal Pool/Alkali Playa			<a href="https://portal.sdmmp.com/view_species.php?taxaid=SDMMP_vegcom_4">https://portal.sdmmp.com/view_species.php?taxaid=SDMMP_vegcom_4</a>

### 13.5 URBAN DEVELOPMENT REFERENCES

AMEC Earth & Environmental Inc., Conservation Biology Institute, Onaka Planning & Economics, and The Rick Alexander Company. 2003. Final MHCP Plan.

Bytnerowicz, A., R. F. Johnson, L. Zhang, G. D. Jenerette, M. E. Fenn, S. L. Schilling, and I. Gonzalez-Fernandez. 2015. An Empirical Inferential Method of Estimating Nitrogen Deposition to Mediterranean-Type Ecosystems: The San Bernardino Mountains Case Study. *Environmental Pollution* 203(2). Elsevier Ltd: 69–88. DOI:10.1016/j.envpol.2015.03.028.

Cinzano, P., and C. D. Elvidge. 2004. Night Sky Brightness at Sites from DMSP-OLS Satellite Measurements. *Monthly Notices of the Royal Astronomical Society* 353:1107–16. DOI:10.1111/j.1365-2966.2004.08132.x.

Cinzano, P., F. Falchi, and C. Elvidge. 2012. The World Atlas of the Artificial Night Sky Brightness. *Copyright Royal Astronomical Society. Reproduced from the Monthly Notices of the RAS by Permission of Blackwell Science.* <http://www.lightpollution.it/worldatlas/pages/fig1.htm>.

Cox, R. D., K. L. Preston, R. F. Johnson, R. A. Minnich, and E. B. Allen. 2014. Influence of landscape-scale variables on vegetation conversion to exotic annual grassland in southern California, USA. *Global Ecology and Conservation* 2:190-203.

Dillingham, T., and K. Miner. 2009. Off-Road Vehicle Barrier Project Proposal for Proctor Valley Road.

Fenn, M. E., J. S. Baron, E. B. Allen, H. M. Rueth, K. R. Nydick, L. Geiser, W. D. Bowman, J. O. Sickman, T. Meixner, D. W. Johnson, and P. Neitlich. 2003. *Ecological effects of nitrogen deposition in the western United States.* BioScience 53:404-420.

Fenn, M.E., J.O. Sickman, A. Bytnerowicz, D.W. Clow, N.P. Molotch, J.E. Pleim, G.S. Tonnesen, K.C. Weathers, P.E. Padgett, and D.H. Campbell. 2009. Chapter 8: Methods for measuring atmospheric nitrogen deposition in arid and montane ecosystems of western North America. *Developments in*

*Environmental Science, Volume 9.* Edited by Allan H. Legge. Elsevier Ltd.  
DOI:10.1016/S1474-8177(08)00208-8.

- Fenn, M. E., E. B. Allen, S. B. Weiss, S. Jovan, L. H. Geiser, G. S. Tonneson, R. F. Johnson, L. E. Rao, B. S. Gimeno, F. Yuan, T. Meixner, and A. Bytnerowicz. 2010. Nitrogen critical loads and management alternatives for N-impacted ecosystems in California. *Journal of Environmental Management* 91:2404-2423.
- Francis, C. D., and J. R. Barber. 2013. A Framework for Understanding Noise Impacts on Wildlife: An Urgent Conservation Priority. *Ecological Society of America* 11(6):305–13.
- Francis, C. D., C. P. Ortega, and A. Cruz. 2009. Noise Pollution Changes Avian Communities and Species Interactions. *Current Biology* 19:1415–19.
- Kimball, S., M. L. Goulden, K. N. Suding, and S. Parker. 2014. Altered water and nitrogen input shifts succession in a southern California coastal sage community. *Ecological Applications* 24:1390-1404.
- International Dark Sky Association. Light Pollution Effects on Wildlife and Ecosystems. 2016. *Light Pollution*. Accessed December 22. <http://darksky.org/light-pollution/wildlife/>.
- Live Science Staff. 2008. Lead Shot From Hunting and Fishing Kills Wildlife. *Live Science*, July 12. <http://www.livescience.com/2690-lead-shot-hunting-fishing-kills-wildlife.html>.
- Perry, G., and R. N. Fisher. 2006. Night Lights and Reptiles: Observed and Potential Effects. In *Ecological Consequences of Artificial Night Lighting*, edited by C. Rich and T. Longcore, pp. 169–91. Washington D.C.: Island Press.
- Perry, L. G., D. M. Blumenthal, T. A. Monaco, M. W. Paschke, and E. F. Redente. 2010. Immobilizing nitrogen to control plant invasion. *Oecologia* 163:13-24.
- Phoenix, G. K., W. K. Hicks, S. Cinderby, J. C. I. Kuylenstierna, W. D. Stocks, F. J. Dentener, K. E. Giller, A. T. Austin, R. D. B. Lefroy, B. S. Gimeno, M. R. Ashmore and P. Ineson. 2006. Atmospheric nitrogen deposition in



- world biodiversity hotspots: the need for a greater global perspective in assessing N deposition impacts. *Global Change Biology* 12:470-476.
- Pivovarovoff, A. L., L. S. Santiago, G. L. Vourlitis, D. A. Grantz, and M. F. Allen. 2016. Plant Hydraulic Responses to Long-Term Dry Season Nitrogen Deposition Alter Drought Tolerance in a Mediterranean-Type Ecosystem. *Oecologia* 181(3). Springer Berlin Heidelberg: 721–31. DOI:10.1007/s00442-016-3609-2.
- Simkin, S. M., E. B. Allen, W. D. Bowman, C. M. Clark, J. Belnap, M. L. Brooks, B. S. Cade, Scott L. Collins, Linda H. Geiser, Frank S. Gilliam, Sarah E. Jovan, Linda H. Pardo, Bethany K. Schulz, Carly J. Stevens, Katharine N. Suding, Heather L. Throop, and Donald M. Waller 2016. Conditional Vulnerability of Plant Diversity to Atmospheric Nitrogen Deposition Across the United States. *Proceedings of the National Academy of Sciences* 113(15):4086. DOI:10.1073/pnas.1515241113.
- Suding, K. N., S. L. Collins, L. Gough, C. Clark, E. E. Cleland, K. L. Gross, D. G. Milchunas, and S. Pennings. 2005. Functional- and abundance-based mechanisms explain diversity loss due to N fertilization. *Proceedings of the National Academy of Sciences* 102:4387-4392.
- Talluto, M. V. and K. N. Suding. 2007. Historical change in coastal sage scrub in southern California, USA in relation to fire frequency and air pollution. *Landscape Ecology*. DOI 10.1007/s10980-00809238-3.
- Tonneson, G., Z. Wang, M. Omary, and C. Chien. 2007. *Assessment of Nitrogen Deposition: Modeling and Habitat Assessment*. Final Project Report prepared for the California Energy Commission by the University of California, Riverside.
- Tuell, C. 2016. Public Lands Under the Gun: Recreational Target Shooting Puts Federal Public Lands in the Crosshairs. *The Arizona Journal of Environmental Law and Policy*. Accessed December 19. <http://www.ajelp.com/synthesis/public-lands-under-the-gun-recreational-target-shooting-puts-federal-public-lands-in-the-crosshairs/>.

Weiss, S. 1999. Cars, cows, and checkerspot butterflies: nitrogen deposition and management of nutrient-poor grasslands for a threatened species. *Conservation Biology* 13:1476-1486.